

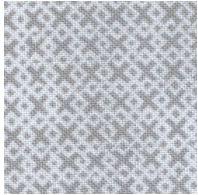


903-638-6915
bomhq@stitchinheaven.com

A KITTENS TALE 2016

Month # 9 APRIL

THE CAT'S GARDEN Block #9



GRAY
BACKGROUND



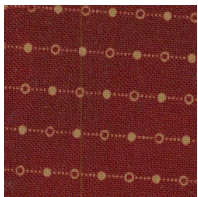
CAT
9 X 5



CAT
9 X 5

INNER BORDER

To make the stripes go the correct direction, this will need to be cut width of fabric and sewed together to get the length you need for the border.



BINDING
DOTS OR
STARS



22 FABRICS
5" X HALF OF WIDTH

THESE ARE FOR THE
HEARTS, YOYO'S
AND SCRAPPY
BORDER
RECTANGLES
OR CORNER SQUARES

PLEASE NOTE:

The pattern says to cut 52 of these rectangles, 14 for the side and 12 for the top and bottom. I counted 19 for the sides and 16 for the top and bottom. I have given you (I hope) plenty of fabrics for 70 rectangles and 4 corner squares.

