

ALL AROUND THE TOWN

Month #6, June

THE ANGEL HOUSE
Block #6



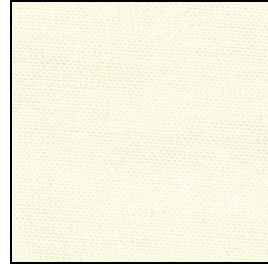
SHUTTERS



ROOF



HOUSE



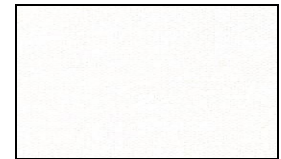
WINDOWS
4 X 5



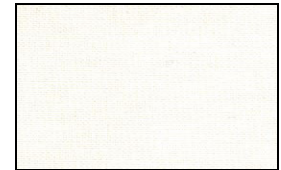
CHIMNEYS



ANGEL HALO



ANGEL WINGS 4 X 6



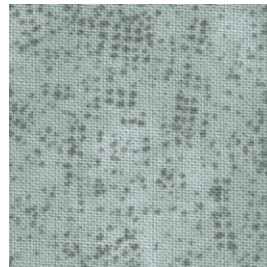
ANGEL FACE, LEGS & HAND



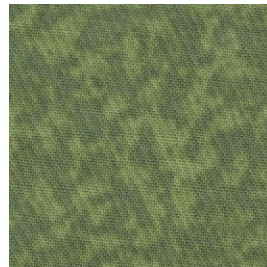
ANGEL DRESS,
HEART



DOOR, FLAG POLE, TREE
TRUNK



TREE & SHRUBS



HILL



SIDEWALK



FLAG

