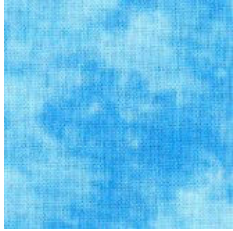


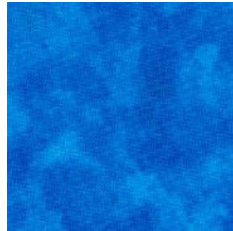
# ALL ROADS LEAD TO THE SEA 2018

Month #7

## Section #7 - GRAY HOUSE



**WATER -  
LIGHT**



**WATER -  
MEDIUM**



**SEAWALL**



**RETAINING  
WALL**



**SIDEWALK  
Top Left  
from Section 4**



**GRASS  
Top Right  
Behind gray house,  
general store, and church**



**SIDEWALK  
Gray House to  
Store and  
Church**



**TREE  
TRUNKS**



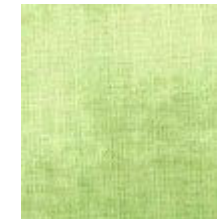
**TREE  
Right of House**



**DARK TREE  
Left of House**



**GRASS  
Top Left  
From Section 4**



**GRASS  
Beside gray house,  
general store, and church**



903-638-6915  
[bomhq@stitchinheaven.com](mailto:bomhq@stitchinheaven.com)

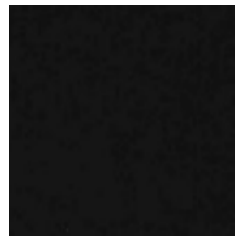
# ALL ROADS LEAD TO THE SEA 2018

Month #7

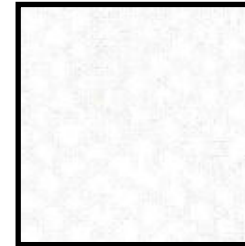
## Section #7 - GRAY HOUSE



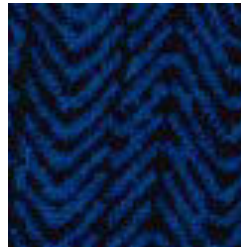
HOUSE -  
MAIN



ROOF, EAVES, COLUMNS,  
PORCH FLOOR



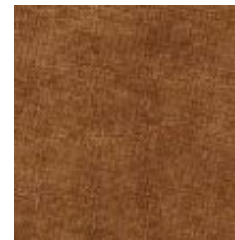
EAVES



DOOR



WINDOWS



PORCH STEP



903-638-6915  
[bomhq@stitchinheaven.com](mailto:bomhq@stitchinheaven.com)