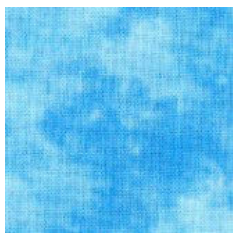


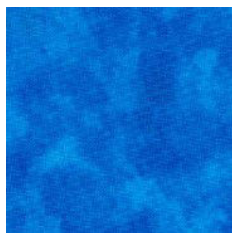
# ALL ROADS LEAD TO THE SEA 2018

Month #8

## Section #8 - TOP OF STORE



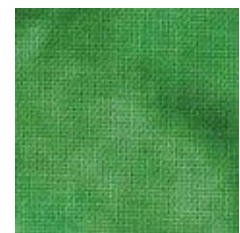
**WATER -  
LIGHT**



**WATER -  
MEDIUM**



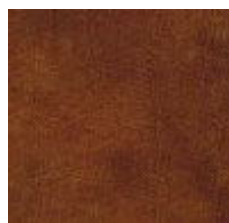
**BOATS**



**TREE  
Right of Store**



**SIDEWALK  
Gray House to  
Store and  
Church**



**TREE  
TRUNKS**



**TREE  
Left of Store**



**TREE  
Next to  
Church**



**CHURCH  
YARD  
GRASS**



903-638-6915  
[bomhq@stitchinheaven.com](mailto:bomhq@stitchinheaven.com)



**CHURCH  
FENCH**

# ALL ROADS LEAD TO THE SEA 2018

Month #8

## Section #8 - TOP OF STORE



**ROOF**



**WINDOWS**

*WHITE WAVY  
LINE TONAL*

**SIGN**

*WHITE POLKA  
DOT TONAL*

**SHUTTERS &  
EAVES**



**MAIN STORE**



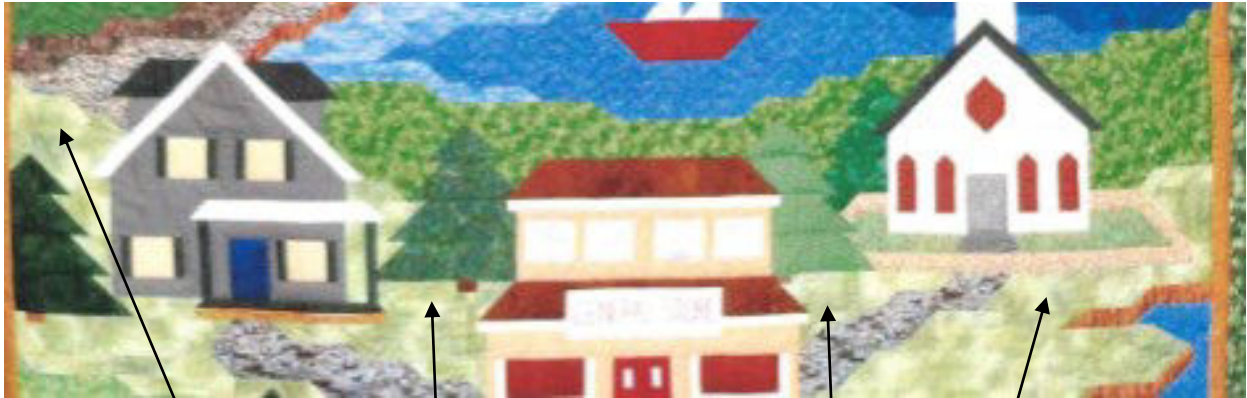
903-638-6915

[bomhq@stitchinheaven.com](mailto:bomhq@stitchinheaven.com)

IMPORTANT NOTE ON GRASS FABRICS:

DUE TO AVAILABILITY, THE SAGE GRASS THAT IS IN MONTHS 7, 8, 9 10 AND 11 NEEDS TO BE 2 DIFFERENT FABRICS.  
WHAT YOU RECEIVED IN MONTH 7 YOU WILL RECEIVE FOR MONTHS 8, 10 AND 11 FOR ALL PIECES TO THE LEFT OF THE STORE.  
YOU WILL RECEIVE A SECOND FABRIC, THAT IS SIMILAR BUT NOT EXACT, FOR ALL PIECES TO THE RIGHT OF THE STORE, WHICH  
WILL BE MONTHS 8, 9 AND 11.

PLEASE CALL WITH ANY QUESTIONS. OUR APOLOGIES FOR THE TROUBLE.

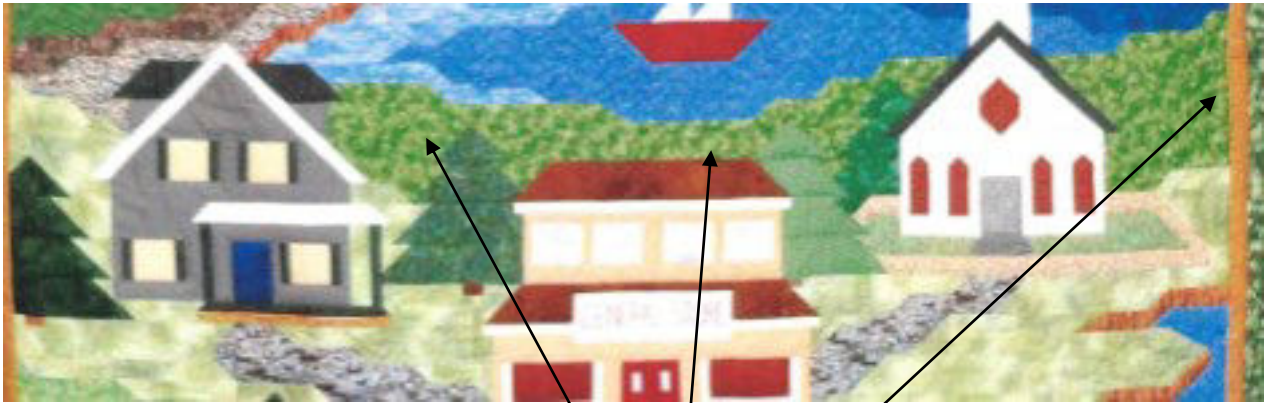


**GRASS  
Left of Store  
From Month 7**



**GRASS  
Right of Store  
Also in Month 9**





**GRASS**  
Top Right  
Behind gray house,  
general store, and church

