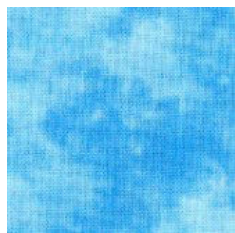


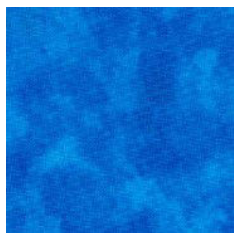
ALL ROADS LEAD TO THE SEA 2019

Month #8

Section #8 - TOP OF STORE



**WATER -
LIGHT**



**WATER -
MEDIUM**



BOATS



**TREE
Right of Store**



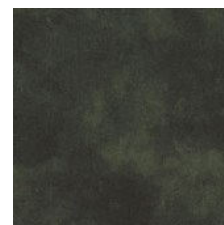
**SIDEWALK
Gray House to
Store and
Church**



**TREE
TRUNKS**



**TREE
Left of Store**



**TREE
Next to
Church**



**CHURCH
YARD
GRASS**



903-638-6915
bomhq@stitchinheaven.com

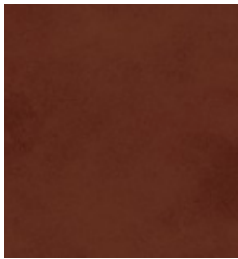


**CHURCH
FENCE**

ALL ROADS LEAD TO THE SEA 2018

Month #8

Section #8 - TOP OF STORE



ROOF



WINDOWS

*WHITE WAVY
LINE TONAL*

SIGN

*WHITE CHECK
MARK TONAL*

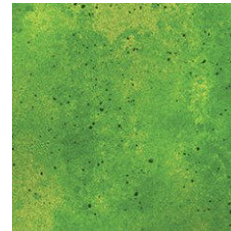
**SHUTTERS &
EAVES**



MAIN STORE



SAGE GRASS



**GRASSY
SEAWALL**



903-638-6915

bomhq@stitchinheaven.com