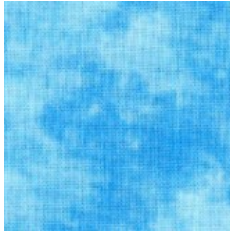


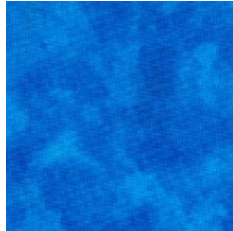
ALL ROADS LEAD TO THE SEA 2020

Month #7

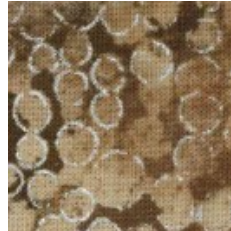
Section #7—GRAY HOUSE



**WATER -
LIGHT**



**WATER -
MEDIUM**



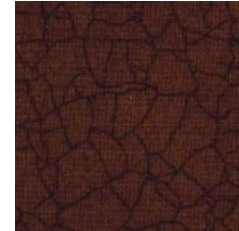
**SIDEWALK
FROM CABIN**



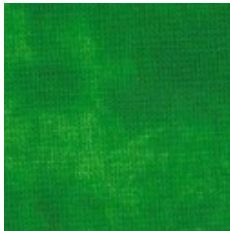
**SEAWALL
ROCKS**



**RETAINING
WALL**



**TREE
TRUNKS**



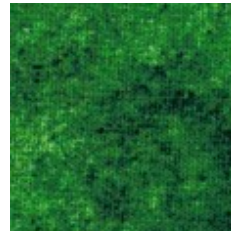
**MED. GRASS
TOP LEFT**



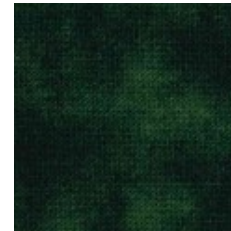
**SIDEWALK
DARK GRAY
STONE**



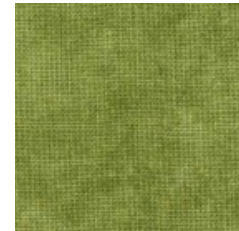
SAGE GRASS



**TREE RIGHT
OF HOUSE
by section #8**



**VERY DARK
TREE
By quilt border**



**GRASSY
SEAWALL**

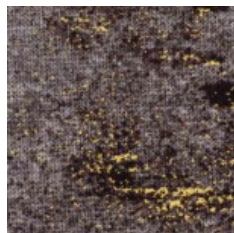


903-638-6915
bomhq@stitchinheaven.com

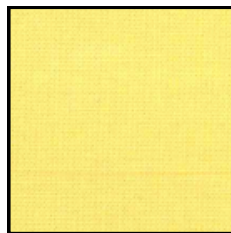
ALL ROADS LEAD TO THE SEA 2019

Month #7

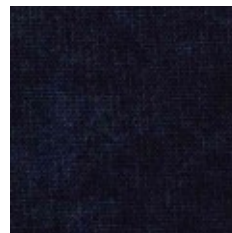
Section #7—GRAY HOUSE



**HOUSE MAIN
DARK GRAY**



WINDOWS



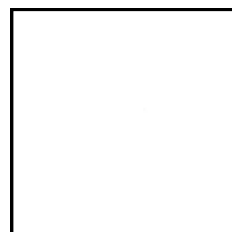
**DOOR
BLUE**



**FRONT OF
PORCH
WOODGRAIN**



**TRIM
BLACK,
and
PORCH**



**ROOF
WHITE
tone on tone**



903-638-6915
bomhq@stitchinheaven.com