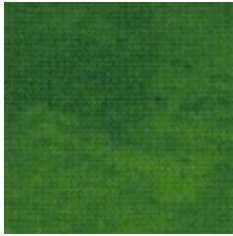


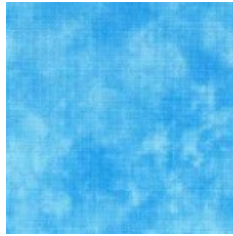
# ALL ROADS LEAD TO THE SEA

MONTH 5

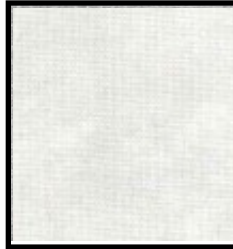
Section #5



**FORGROUND  
#1  
GRASS**



**LIGHT  
OCEAN**



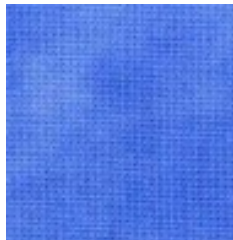
**BOAT  
SAIL**



**RETAINING  
WALL**



**SEA SHORE  
#1**



**MEDIUM  
OCEAN**



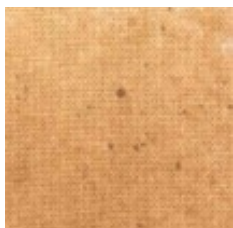
**BOAT  
HULL**

**SEA SHORE  
#2**

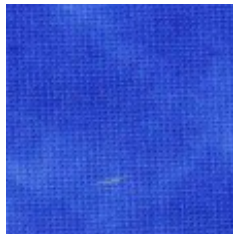


**FABRIC IS DIRECTIONAL SO POSITION  
ACORDING TO HOW YOU POSITIONED SECTION  
3 AND 4.**

**FABRIC PIECE IS LARGE ENOUGH TO CUT  
EITHER DIRECTION USING CUTTING  
SUGGESTION**



**CEMENT  
SIDEWALK**



**DARK  
OCEAN**

**WALKWAY**



903-760-7397