

ALL ROADS LEAD TO THE SEA 2023

MONTH 1

SECTION 1: TWO TREES



Tips from previous programs:

Before you cut, use starch or Best Press on your fabrics.

Cut all your pieces at the beginning, and then lay out the pieces on a design board.

Sew in each box (darker outline in the pattern), and then sew rows together.

On tiny pieces, such as the tree trunk and grass piece in the last box, it is sometimes helpful to sew it larger and trim it down.

If you're unsure about directions, make a sample block first out of scraps.

If you join our Facebook page for All Roads Lead To The Sea at <https://www.facebook.com/groups/allroads/>, tips can be shared between quilters to give best techniques to each other. You can always call (903) 760-7397.



903-760-7397

ALL ROADS LEAD TO THE SEA

MONTH #1

SECTION 2

COTTAGE BLOCK



SKY
16X21



FRONT TREE
12X6



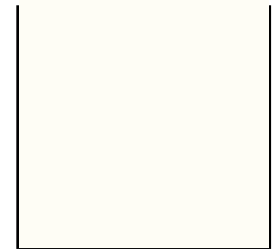
REAR TREE
14X4



TREE TRUNKS
4X4



MEDIUM GRASS
14X14



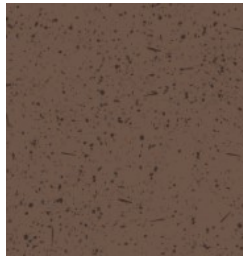
COTTAGE MAIN
12X14



WINDOWS
5 X 7



COTTAGE
TRIM
8 X 10.5



ROOF
12 X 8



DOOR
7 X 5



CEMENT SIDEWALK
4X5



903-760-7397