

All Roads Lead To The Sea (Section #3 Lighthouse)

Pattern by Country Creations

Note: Fabrics will be different than fabrics in your package. I recommend doing a fabric key in the colors you are using.

I like to cut my fabric out by color. You can follow the pattern and cut out as you work on a section of it if you want to cut all at once, here is the breakdown:

Sky: 13 x 17 ½ 13 x 3 ½ 11 x 7 ½ (3) 1 ½ x 5 ½ (2) 4 x 2 ½ (4) 1 ½ x 1 1 ½ x 2 ½ (7) 1 ½ x 1 ½	Seashore #1: 2 ½ x 7 ½ 2 ½ x 5 ½ 2 ½ x 2 ½ (2) 2 ½ x 2 (7) 1 ½ x 2 ½ 1 ½ x 3 ½ (5) 1 ½ x 1 ½ (2) 1 ½ x 2 2 ½ x 3 ½	Lighthouse: 7 ½ x 3 ½ 7 ½ x 1 ½ (5) 1 ½ x 2 ½ 1 ½ x 4 ½ (2) 1 x 1 ½ (3) 1 ½ x 1 ½ 2 ½ x 5 2 ½ x 1 2 ½ x 2 (2) 3 ½ x 2 ½ (Sails)	Foreground #1: 2 ½ x 4 ½ (4) 1 ½ x 2 ½ (2) 1 ½ x 1 ½	Driveways: 2 ½ x 3 ½ 1 ½ x 3 ½
Light Ocean: 3 ½ x 4 ½ 3 ½ x 3 ½ (2) 1 ½ x 3 ½ (2) 2 ½ x 2 ½ (4) 2 ½ x 1 ½ 1 ½ x 1 ½	Medium Ocean: 2 ½ x 7 ½ 3 ½ x 3 ½ 2 ½ x 2 ½ (3) 1 ½ x 2 ½ (2) 1 ½ x 1 ½ 1 ½ x 5 ½	Dark Ocean: 2 ½ x 4 ½ 2 ½ x 2 ½	Windows: (5) 1 ½ x 1 ½	Trim (Bottom): 1 ½ x 5 ½ 1 x 4 ½ 1 x 2 ½
			Trim (Top): 1 x 4 ½	
			Seashore #2: 3 ½ x 3 ½ 1 ½ x 2 ½ 1 ½ x 1 ½	Boat: 3 ½ x 1 ½ (3) 1 ½ x 1 ½ 1 ½ x 2 ½

Cutting:

On the Sky fabric, make sure to cut the 13 x 17 ½, 13 x 3 ½, and 11 x 7 ½ piece first.

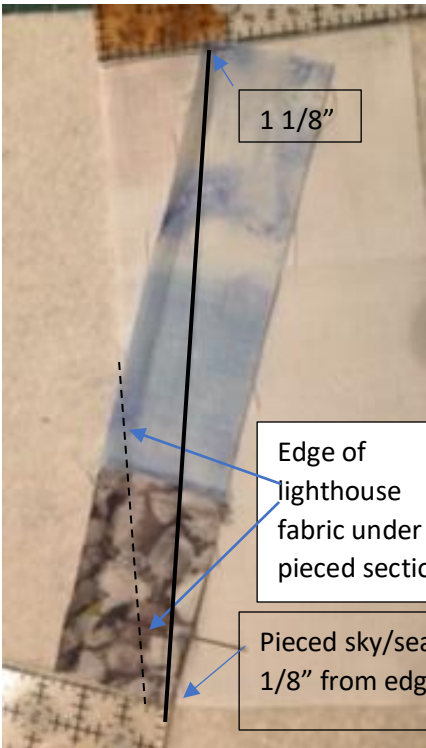
On the remaining fabric, I did strips with the most used size, cut the blocks from largest to smallest, I was able to cut out all blocks with fabric to spare.

Piecing:



I started with the more complicated block for this one. This is under the “Special Piecing Diagram” at the bottom of Page 10. I also used the instructions for Construction of 60 Degree Connector Corners on Page 3. The lighthouse block using lighthouse block $7\frac{1}{2} \times 3\frac{1}{2}$ is tricky since the rectangles are not the same size. For this one, you had to make adjustments since the smaller rectangle is $1\frac{1}{2}$ ” wide compared to the bigger rectangle being $3\frac{1}{2}$ ” wide.

Special Piecing Diagram:

In this part, take lighthouse building $7\frac{1}{2} \times 3\frac{1}{2}$ and $7\frac{1}{2} \times 1\frac{1}{2}$; sky (2) $5\frac{1}{2} \times 1\frac{1}{2}$; and Seashore #1 $2\frac{1}{2} \times 1\frac{1}{2}$.

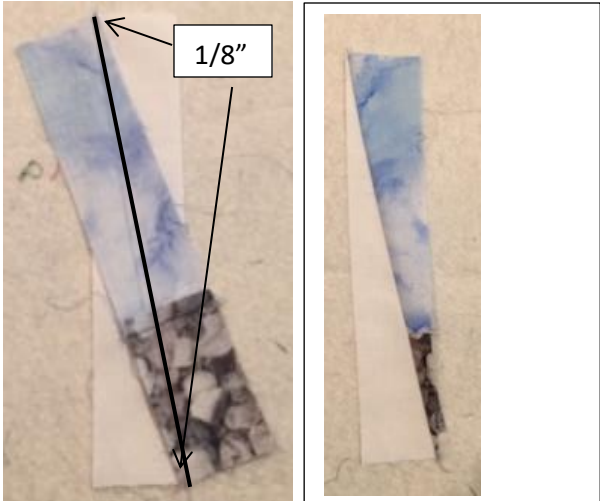


1. Sew the sky piece to the seashore #1 piece (short side)
2. Place pieced section on top of lighthouse $7\frac{1}{2} \times 3\frac{1}{2}$ piece and offset by $\frac{1}{8}$ ”
3. Since they are not the same size offset is based on placement if the lighthouse fabric was only 12” wide.
4. Draw line $\frac{1}{8}$ ” from each corner as shown on black line and sew on line
5. Check to make sure corners fold over correctly (If not, check $\frac{1}{8}$ ”




Tip: You can mark the edge using the top piece or use scrap to judge offset if bottom piece is not the same width as top. Triangle piece sticking out should stick out $\frac{1}{8}$ ”.

Now we are going to do the other slated side of the lighthouse. I found this one easier since both pieces are the same size.

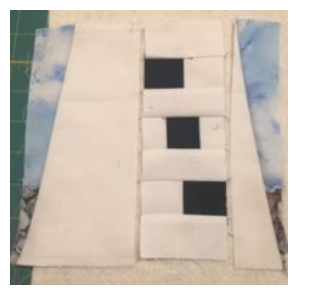


1. This is a repeat of the instructions in the previous section except both pieces are the same size
2. Offset 1/8" with the angle shown
3. Line is 1/8" from each corner.
4. Sew on line
5. Check to make sure the piece covers the corner properly. If not, check offset and 1/8"
6. Trim 1/4" from line

Tip: Always check to make sure corner is complete. It is easier to fix before you trim!

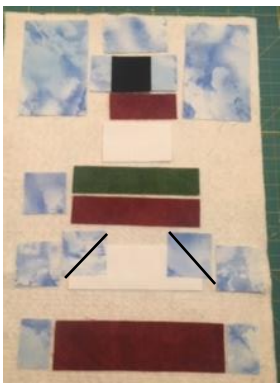


1. Sew the middle lighthouse section rows together and then sew the rows together.



2. Finish by sewing the sides of the lighthouse onto the middle section.

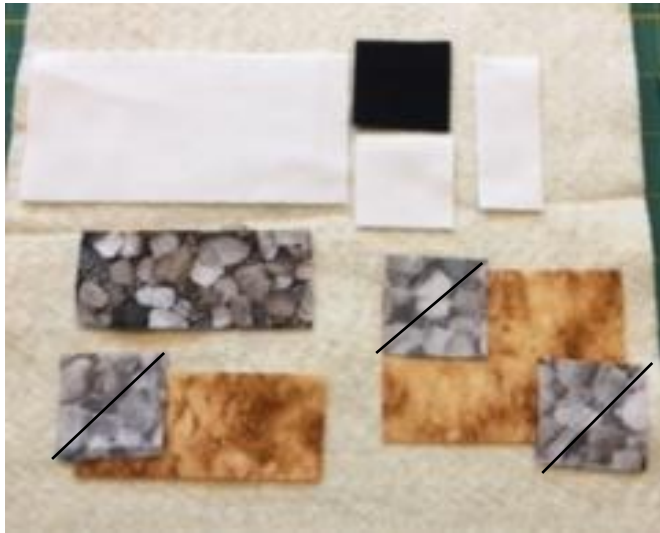
You have completed the most complicated part of this block!



1. Now lets piece the top of the lighthouse. This one has 2 45 degree connectors and the rest is piecing.
2. Draw diagonal line on sky 1 1/2 x 1 1/2 piece as shown and place on corners of lighthouse 1 1/2 x 4 1/2 as shown
3. Sew connector pieces and trim
4. Piece sky pieces to each side of top 1 1/2 x 1 1/2 piece and then combine with pieces above and below
5. Create groups as shown in next picture.



1. Create the groups shown.
2. Sew sky $4 \times 2 \frac{1}{2}$ to each side of middle
3. Combine section created in step 2 with the remaining rows.
4. You are ready to complete the bottom section of the lighthouse.



1. Draw diagonal line on $3 \times 1 \frac{1}{2}$ seashore
2. Sew connector corners
3. Sew $1 \frac{1}{2} \times 1 \frac{1}{2}$ window with $1 \frac{1}{2} \times 1 \frac{1}{2}$ lighthouse



1. Combine top row
2. Sew $1 \frac{1}{2} \times 3 \frac{1}{2}$ seashore piece to $1 \frac{1}{2} \times 3 \frac{1}{2}$ walkway piece
3. Combine piece from #2 with $2 \frac{1}{2} \times 3 \frac{1}{2}$ walkway piece.
4. Sew two rows together.
5. You are ready to complete the lighthouse section

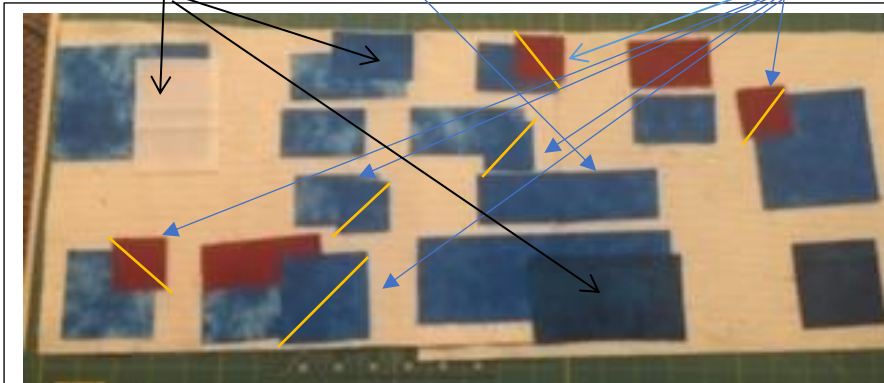


Combine the tree lighthouse section and set aside for pieces to be added on each side.

1. Detail pictures for 60 degree corners below
2. Sew boat $1\frac{1}{2} \times 2\frac{1}{2}$ to medium ocean $1\frac{1}{2} \times 2\frac{1}{2}$ long side
3. Sew boat $1\frac{1}{2} \times 3\frac{1}{2}$ to light ocean $1\frac{1}{2} \times 3\frac{1}{2}$ then proceed with 45 degree corner
4. Draw diagonal line in 45 degree corner blocks, sew on line and trim.

60 degree corners

45 degree corners



60 degree blocks

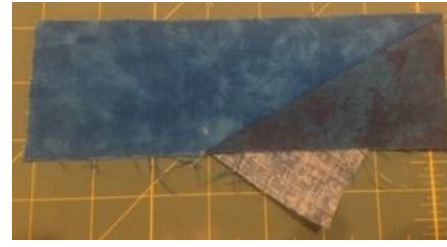
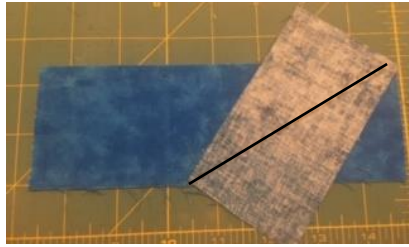
	<p>1</p>	<ol style="list-style-type: none"> 1. Mark edge. The top will be offset 1/8" (corner that sticks out should be 1/8") 2. Rotate top piece clockwise and offset by 1/8" based on the point in step 1 3. Draw line from 1/8" offset on each corner shown 4. Sew on line 5. Check for coverage and trim 	
	<p>2 & 3</p>		<p>Trim 1/4" from sew line on side of corner</p>
	<p>5</p>		<p>Finished block</p>

The rest of the 60 degree corners follows:

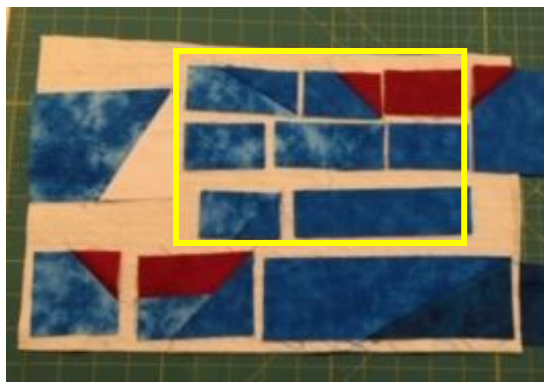
	<p>Light Ocean 1 1/2 x 2 1/2 and medium ocean 1 1/2 x 3 1/2</p>



Medium ocean 2 ½ x 7 ½ and dark ocean 2 ½ x 4 ½

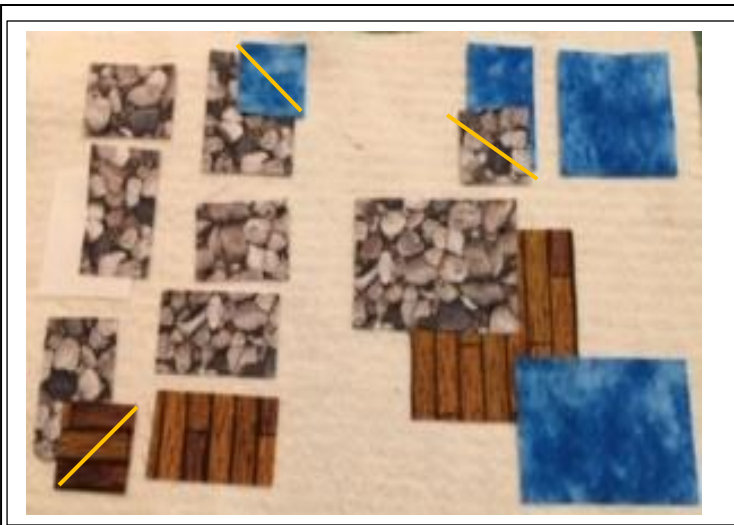


Now that you have prepared the blocks, place them according to the pattern.

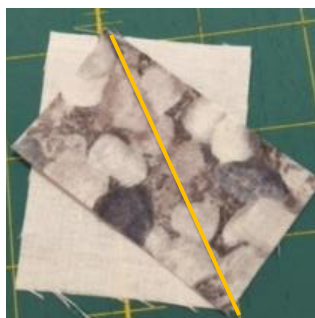


1. Finish the 3 rows in the middle section shown in yellow box.
2. Sew the 3 rows together
3. Add the section created in #2 with the sky 3 ½ x 4 ½ (with sail) on left
4. Add the section created in #3 with medium ocean 3 ½ x 3 ½ (with boat) on right
5. Combine the two rows
6. Set aside for later

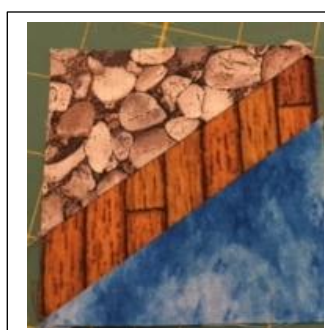
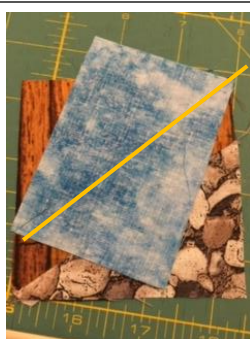




1. Detail pictures for 60 degree corner below
2. Draw diagonal line in 45 degree corner blocks
3. Sew on diagonal line (yellow in picture) and trim $\frac{1}{4}$ " from line



1. Sail $2\frac{1}{2} \times 2$ and seashore #1 $1\frac{1}{2} \times 2\frac{1}{2}$
2. Seashore #2 $3\frac{1}{2} \times 3\frac{1}{2}$; Seashore #1 $3\frac{1}{2} \times 2\frac{1}{2}$ and light ocean $2\frac{1}{2} \times 3\frac{1}{2}$





1

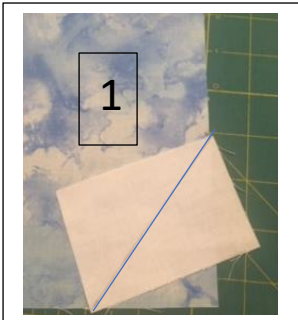
1. Start combining in the pattern shown



2



3



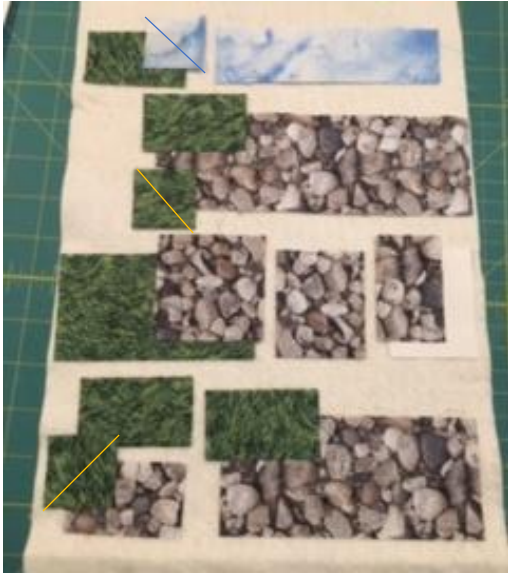
1

1. Add 60 degree corner to bottom right sky 13 x 17 1/2
2. Add 45 degree corner on opposite side of 13 x 17 1/2
3. Combine with blocks set aside as shown



2



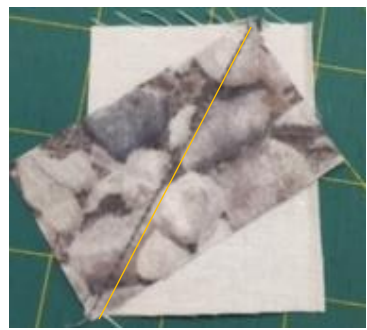


Steps to finish last section of foreground/seashore

1. Draw diagonal lines on 45 corners as shown
2. Sew on line and trim
3. 60 degree corners will be shown below



See lines for 60 degree corners for Foreground/Seashore section





1. Combine finished foreground / seashore previously done with sky 11 x 7 ½
2. Take the section from #1 and combine with previous set aside section of lighthouse and ocean to the right of lighthouse

Final Block for Section #3 (Lighthouse Block)

