

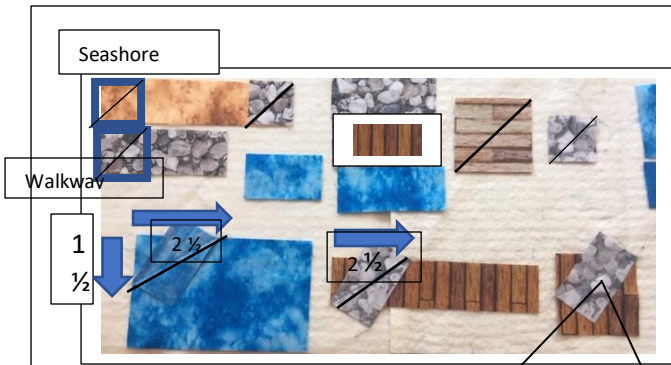
All Roads Lead To The Sea (Section #5 Seashore/Boats)

Pattern by Country Creations

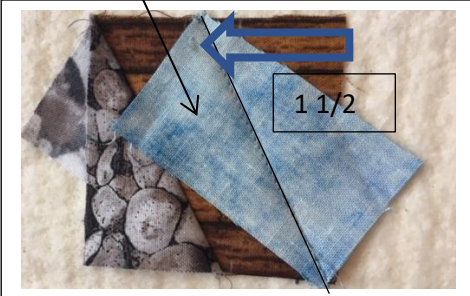
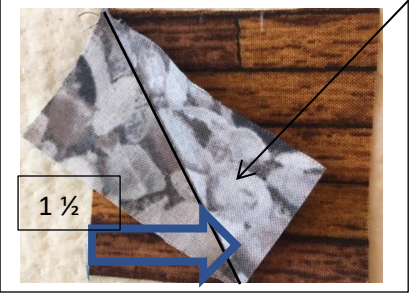
Note: Fabrics will be different than fabrics in your package. I recommend doing a fabric key in the colors you are using.

I like to cut my fabric out by color. You can follow the pattern and cut out as you work on a section or if you want to cut all at once, here is the breakdown (* denotes suggested cut first):

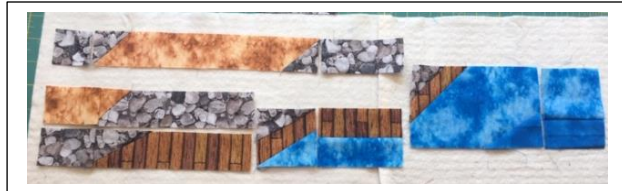
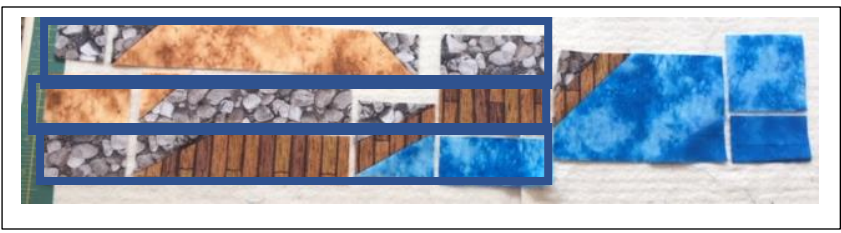
Seashore #1: 2 ½ x 9 ½* 2 ½ x 5 ½ 1 ½ x 5 ½ (5) 1 ½ x 2 ½ (2) 1 ½ x 3 ½ 1 ½ x 4 ½ 2 ½ x 3 ½ 1 ½ x 6 ½ (4) 1 ½ x 1 ½	Light Ocean: 3 ½ x 5 ½* (2) 2 ½ x 7 ½* 1 ½ x 11 ½* 4 ½ x 2 ½ 3 ½ x 3 ½ 1 ½ x 5 ½ (3) 2 ½ x 2 ½ (6) 1 ½ x 2 ½ (2) 1 ½ x 4 ½ (3) 1 ½ x 1 ½ 1 ½ x 3 ½	Seashore #2 (Wood): 1 ½ x 6 ½ 1 ½ x 5 ½ 1 ½ x 4 ½ (2) 1 ½ x 3 ½ 2 ½ x 1 ½ (7) 1 ½ x 1 ½ (2) 2 ½ x 2 ½	Medium Ocean: 3 ½ x 6 ½ 1 ½ x 6 ½ 2 ½ x 4 ½ (2) 2 ½ x 2 ½ (9) 1 ½ x 2 ½ (8) 1 ½ x 1 ½ 1 ½ x 3 ½	Dark Ocean: 2 ½ x 5 ½ 1 ½ x 3 ½ 1 ½ x 1 ½
Foreground: 2 ½ x 2 ½ 1 ½ x 3 ½ (2) 1 ½ x 2 ½		Boat: 1 ½ x 2 ½ 1 ½ x 1 ½	Sails: (4) 2 ½ x 2 ½ (4) 1 ½ x 1 ½	Walkway: 1 ½ x 9 ½ 1 ½ x 2 ½ 1 ½ x 1 ½



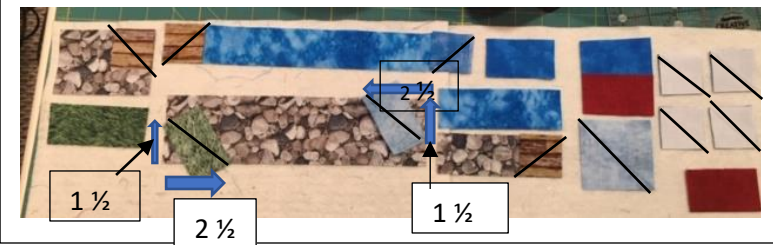
1. Draw diagonal line on (3) $1 \frac{1}{2} \times 1 \frac{1}{2}$ seashore. (One not shown) Draw diagonal line on $1 \frac{1}{2} \times 1 \frac{1}{2}$ walkway (not shown)
2. Seashore #2 not to size. There to show placement of $1 \frac{1}{2} \times 3 \frac{1}{2}$ block
3. 60 degree corners shown. See measurements shown and angles of sew line



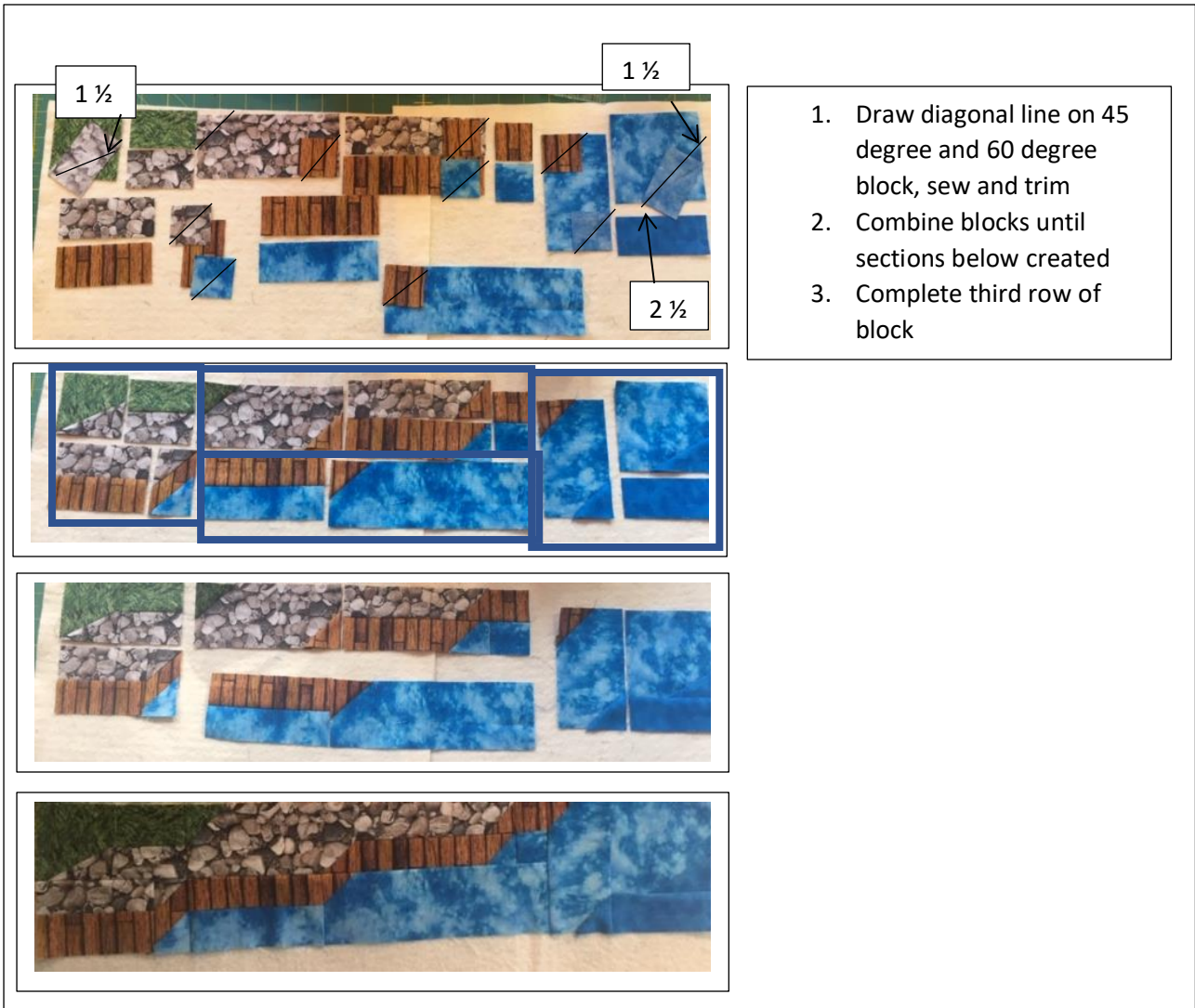
4. Detail of $2 \frac{1}{2} \times 2 \frac{1}{2}$ seashore #2 shown. Be careful of angles. Finished block should be parallel.
5. For Light Ocean $3 \frac{1}{2} \times 5 \frac{1}{2}$ add 45 degree seashore #2 $2 \frac{1}{2} \times 2 \frac{1}{2}$ corner and then Seashore #1 $1 \frac{1}{2} \times 1 \frac{1}{2}$ (45 degree corners are opposite of 60 degree corner)

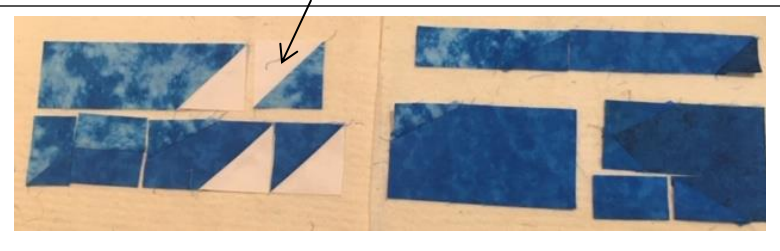
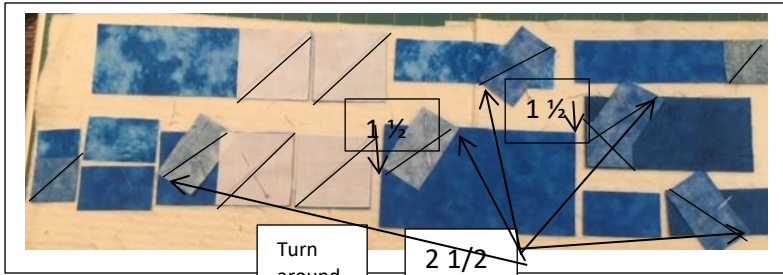


1. Sew light ocean $2 \frac{1}{2} \times 2 \frac{1}{2}$ to medium ocean $1 \frac{1}{2} \times 2 \frac{1}{2}$
2. Combine rows as shown in blue boxes
3. Combine 3 rows together.
4. Sew block created in #1 to Light Ocean $3 \frac{1}{2} \times 5 \frac{1}{2}$
5. Sew step 3 and 4 together



1. Sew Medium Ocean 2 ½ x 2 ½ to Boat 1 ½ x 2 ½
2. Take step #1 and add light ocean 2 ½ x 2 ½ to bottom left corner(45 degree corner)
3. Draw diagonal line on remaining blocks, sew and trim
4. Sew sails into group of 4 and add to boat 1 ½ x 2 ½
5. Create groups shown
6. Make into final second row of the block





1. Draw diagonal line on 45 degree and 60 degree blocks, sew and trim
2. Combine blocks until sections below created
3. Complete fourth row of block



Combine the 4 rows to finish the block

Section 5 Block

