

ALL ROADS LEAD TO THE SEA

MONTH 1

SECTION 1: TWO TREES

Sky



10 X 21

Foreground



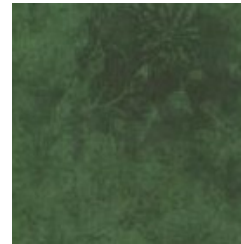
12 X 14

Tree Trunk



3 X 3

Rear Tree



9 X 14

Front Tree



9 X 14

Tips from previous programs:

Before you cut, use starch or Best Press on your fabrics.

Cut all your pieces at the beginning, and then lay out the pieces on a design board.

Sew in each box (darker outline in the pattern), and then sew rows together.

On tiny pieces, such as the tree trunk and grass piece in the last box, it is sometimes helpful to sew it larger and trim it down.

If you're unsure about directions, make a sample block first out of scraps.

If you join our Facebook page for All Roads Lead To The Sea at <https://www.facebook.com/groups/allroads/>, tips can be shared between quilters to give best techniques to each other. You can always call (903) 760-7397.



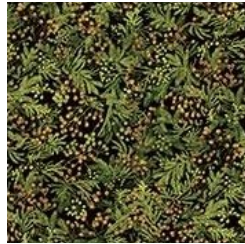
903-760-7397

info@stitchinheaven.com

ALL ROADS LEAD TO THE SEA
MONTH #1
SECTION 2
COTTAGE



SKY
16 x 21



FRONT TREE
12 x 6



REAR TREE
14 x 4



TREE TRUNK
3 x 3



FOREGROUND
12 x 14



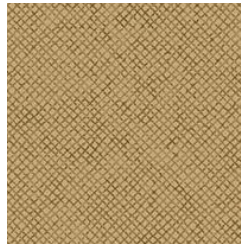
HOUSE
12 x 14



WINDOWS
7 x 5



TRIM
8 x 10.5



ROOF
12 x 8



DOOR
7 x 5



WALKWAY
5 x 4



903-760-7397

info@stitchinheaven.com