

And On That Farm

Month #1



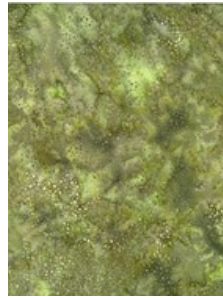
903-760-7397

info@stitchinheaven.com

With a Big Quilt Here and a Small Quilt There



1384-33 Cream
Background
Quilt E3, O5



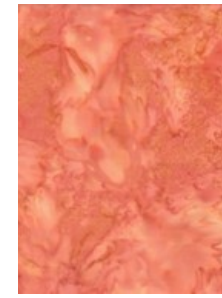
885-96 Olive
Hillside I1



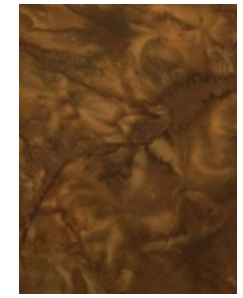
1384-466 Fauna
Bushes A,B,C,D,R32



1895-5 Red
Quilt E4
Chicken/Rooster Waddles
U8,V5,W5,X4,Y5



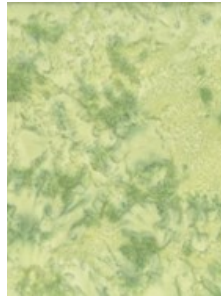
1895-13 Orange
Quilt H12



1895-58 Earth
Horse Q2,Q4,Q5,Q7



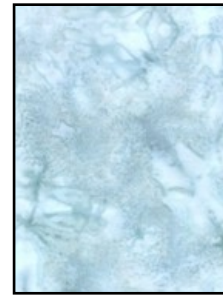
1895-64 Tan
Horse Q1,Q3



1895-105 Celadon
Field K2,K6,K12



1895-137 Pearl
Pig O22



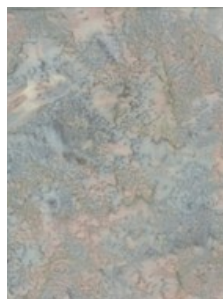
1895-222 Hydrangea
Quilt E6,Q11,Q13



1895-227 Sprout
Hillside G1, G2



1895-238 Topaz
Chicken Feet AA1,AA2,
V1,V2,W1,W2,X1,X2,Y1,Y2,
Z1,Z2
Beaks AA4,V6,W6,X5,Y6,Z4



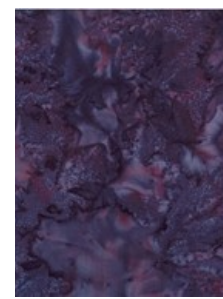
1895-270 Hippo
Pathway R33



1895-303 Frog
Flower Stems
R2,R5,R9,R10,R13,
R17,R18,R23,R24,R27



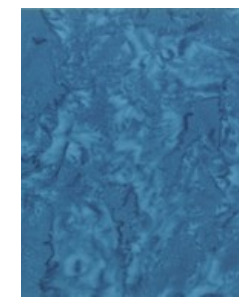
1895-309 Viridian
Barn E7
Quilt H14,O4,O7,O9,
O11,O14,O17,Q10



1895-394 Merlot
Flower Centers
R4,R7,R12,R15,R20,
R22,R26,R29,R31



1895-438 Crocus
Quilt
O6,O10,O15,O18,O19



1895-442 Flax
Quilt E5,F15,F17,Q12

And On That Farm

Month #1



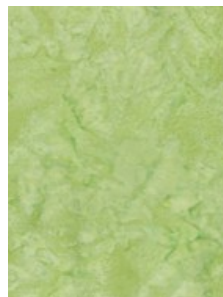
903-760-7397

info@stitchinheaven.com

With a Big Quilt Here and a Small Quilt There



1895-537 Blacklight
Cat Q29, Sheep L3,I10,
I12,I14,I16,I17,I19
Door O20, Window O3
Weathervane O31,O32



1895-539 Parsley
Field K1,K3,K8
Quilt H11



1895-550 Big Sur
Window Q20



1895-593 August
Chicks Z3, AA3



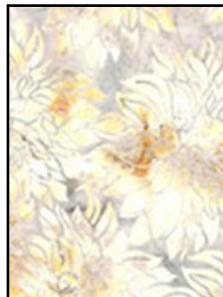
1895-594 September
Pig O21,O23,O24,O25



1895-602 Earth Day
Quilt
O8,O12,O13,O16



BPN020-150 Sunflower
Sunflowers R3,R6,R8,R11,
R14,R16,R19,R21,R25,R28,
R30, Quilt Q15



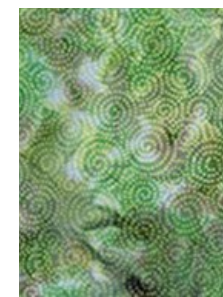
BPN020-218 Camellia
Quilt H13
Chickens
W3,W4,X3,Y3,Y4



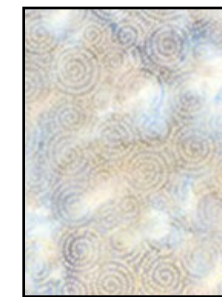
BPN022-27 Peach
Quilt F18



BPN022-115 Grass
Hillsides P,R1
Quilt Q14



BPN022-225 Rosemary
Hillsides M1,M2,R34



BPN022-472 Pebble
Quilt F16



BPN022-554 Treetop
Hillsides J1,L1,L9
Barn F5,F10



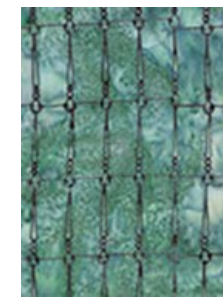
BPN023-229 Wisteria
Silo Top H3



BPN023-331 Herb
Trees J2,J3,J5,J7,J9,J11,
J13,J15,J16,J18,L4,L6,L7,
L8,T1,T3,T4,T5,T6



BPN024-24 Alabaster
Horse Q6,Sheep
I9,I11, I13,I15,I18,L2,
Quilt F14, Rooster
U6,U7



BPN025-41 Aqua
Silo H2,H4,H5

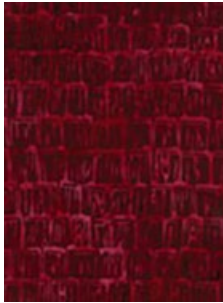


BPN026-21 Teal
Rooster U4,U5, Barn E2,E8,
O1,O28,O33,O34,O35,O36,
O37, Quilt Q17,Q19

And On That Farm

Month #1

With a Big Quilt Here and a Small Quilt There



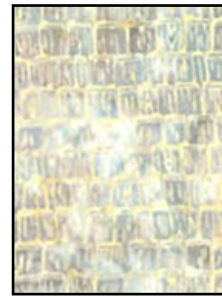
BPN026-99 Cranberry
Barn H8,Q8



BPN026-131 Oak
Rooster Feet/Beak
U1,U2,U9
Chicken V3,V4



BPN026-140 Petal
Barn E10,E11
Silo H1



BPN026-164 Antique
Barn O2,O26,O27,O29,
O30,O38,Q21,Q22,Q25



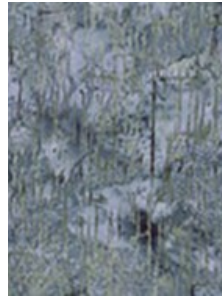
BPN028-32 Bleached
Fence I2-I8,J20-J23,
N1-N4,S1-S17
Barn Q9,Q24
Quilt Q16,Q18



BPN028-99 Cranberry
Barn H7,Q26,Q27,Q28



BPN028-267 Palomino
Tree Trunks
J4,J6,J8,J10,J12,J14,
J17,J19,L5,T2
Hay Bales
K4,K5,K7,K9,K10,
K11,K13,K14,K15



BPN028-611 River Rock
Barn E1,E9,F1,F3,F4,F8,
F9,F12,F13,H6,H9,H10



L2572-511 Bluff
Hay Q23



L2634-457 Oasis
Barn F2,F6,F7,F11



L2665-4 Black
Rooster U3



903-760-7397

info@stitchinheaven.com