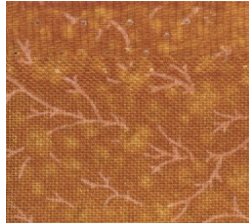


BALTIMORE HALLOWEEN 2020

Month #13 OCTOBER

CAULDRON OF CANDY
Block #13 CENTER BLOCK



**GOLD
PUMPKIN
OUTSIDE
#136, 137**



**GOLD
PUMPKIN
MIDDLE
#138**



**ORANGE
PUMPKIN
MIDDLE
#133**



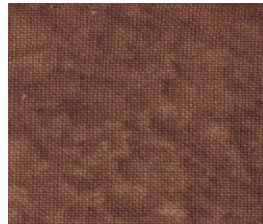
**ORANGE
PUMPKIN
OUTSIDE
#131, 132**



**ACORNS
#46, 48, 50, 55, 57,
59, 91, 93, 95, 113,
115, 117, 144, 146,
148**



**ACORNS
#45, 47, 49, 54, 56, 58,
90, 92, 94, 112, 114,
116, 143, 145, 147**



**ACORN STEMS
#44, 53, 89, 111, 142**



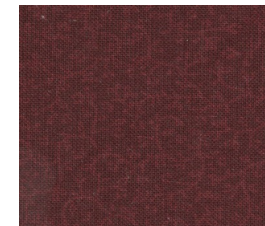
**GOLD
LEAVES
#108, 110**



**ORANGE
LEAVES
#43, 52**



**GREEN
LEAVES
#38, 63, 134**



**RED
LEAVES
#28, 42, 51, 62**

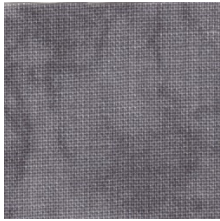


903-760-7397
info@stitchinheaven.com

BALTIMORE HALLOWEEN 2020

Month #13 OCTOBER

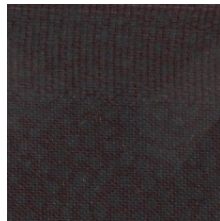
CAULDRON OF CANDY Block #13 CENTER BLOCK



**CAULDRON RIM
& HANDLES**
#106, 107, 109



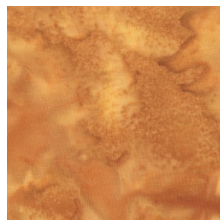
CAULDRON
#105



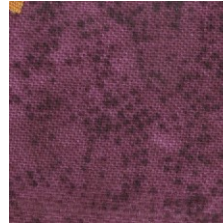
BAT WINGS
#3, 4, 6, 7, 34, 35,
70, 71, 127, 128,
162, 163
(oval print)



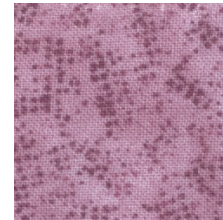
SPIDER
#125, 126
BAT BODIES
#5, 8, 36, 72, 129,
164, 167
WITCH #2 (7X7 piece)
(solid black)



MOON
#1



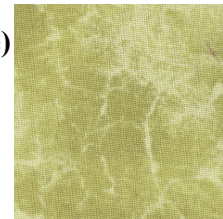
CANDY
#18, 20, 21, 85, 86,
88, 121, 122, 124,
155, 156, 158



CANDY
#20, 87, 123, 157



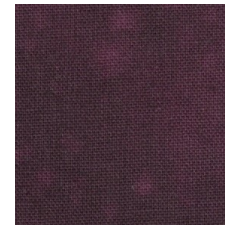
CANDY
#9, 10, 15, 16, 31, 32,
65, 66, 82, 83, 99,
100, 139, 140, 152,
153



CANDY
#11, 17, 67, 101, 141,
154



**WITCH HAT
TOPS**
#30, 69



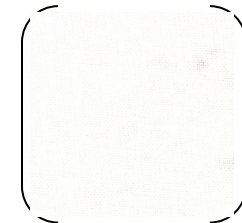
**WITCH HAT
BRIMS**
#29, 68



**BROOM
HANDLES**
#27, 61
**PUMPKIN
STEMS**
#130, 135



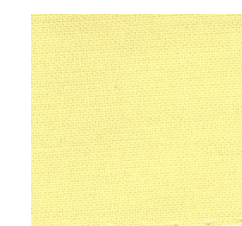
**BROOM
TOPS**
#29, 60



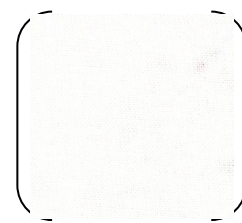
CANDY CORN
#13, 24, 40, 73,
76, 79, 96, 102,
119, 150, 160
(solid white)



CANDY CORN
#14, 25, 41, 75,
81, 98, 104, 120,
151, 161



CANDY CORN
#12, 23, 39, 74, 77,
80, 97, 103, 118,
149, 159



GHOSTS
#37, 64
(dot white)

