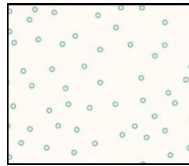


Bee Happy

Month # 12

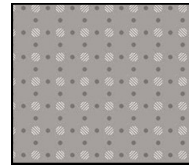
Pin Cushion Block



Background 6 x 8



Jar 7 x 5

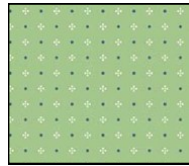


Lid 2 x 10.5

Three Trees Block



Side Tree Top
4 x 5

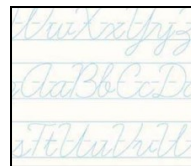
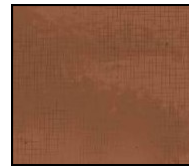
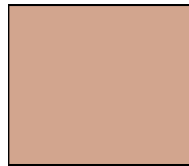


Side Tree Top
4 x 5



Center Tree Top
6 x 6

Branches
(one of these)
4 x 10.5

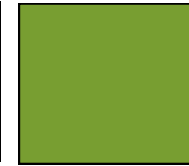


Background
12 x 8

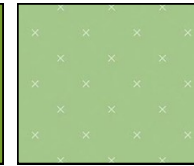
Coral Flowers Block



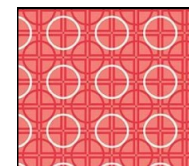
Bkgrd 16 x 21



Stems 2 x 10.5



Leaves 12 x 5



Center Flower
6 x 6



Center 4 x 4



Side Flowers
5 x 21



Side Flowers Centers
3 x 10.5



903-760-7397
info@stitchinheaven.com