

# Bee Happy Month #8

## Flower Pot, Pear, Peach, & Thermos Blocks

Flower Pot Block



Flower 1  
4 x 5



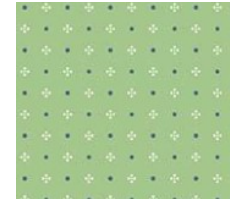
Flower 2  
4 x 5



Flower 3  
4 x 5



Flower center  
3 x 10.5



Leaves 1  
6 x 3



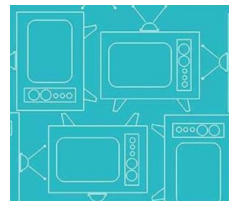
Leaves 2  
6 x 3



Leaves 3  
6 x 3



Stem  
3 x 10.5



Pot 1  
3 x 4



Pot 2  
3 x 4



Pot 3  
3 x 4



Will receive one of these fabrics.

Pot Lip  
4 x 10.5



Background 1  
6 x 10.5

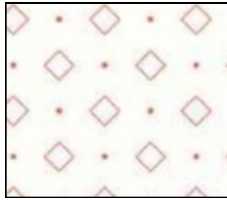


Background 2  
6 x 10.5



Background 3  
6 x 10.5

Pear Block



Pear  
4 x 4

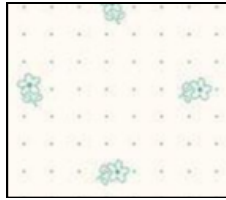
Background  
7 x 7



Leaf  
3 x 3

Stem  
2 x 10.5

Peach Block



Peach  
4 x 4

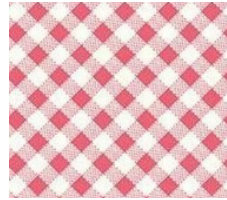
Background  
7 x 7



Leaf  
3 x 3

Stem  
2 x 10.5

Thermos Block



Thermos 1  
5 x 5

Thermos 2  
5 x 5



Lid 1  
3 x 3  
Handle 1  
3 x 10.5  
Base 1  
3 x 2

Lid 2  
3 x 3  
Handle 2  
3 x 10.5  
Base 1  
3 x 2



Background  
9 x 7



903-760-7397

info@stitchinheaven.com