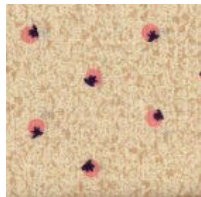


# BIBLE SAMPLER 2019

Month #3 MAY  
BLOCKS #17-20

## Chariot wheel Block #17



Piecing—A,B,C

Piecing—A,B,C

A,B,C,D,F,G,H,I

**PAPER PIECING**  
B,C,D,F,G,H,I

**Note:** During this program you will be making the 6 1/2" blocks.  
**Do not trim them to 6"**

## Children of Israel Block #19



Piecing - A,B,C

Piecing - D,E,F

A-B-C-D-E

**PAPER PIECING-**  
D,E,F



Piecing- B,C

A,B,C,,D,E,F,G,H,I



Piecing - D

A,B,C



**Piecing - A,B,C,D**

A,B,C



Piecing - A,B,C,D,E,F

A,B,C,D



**Piecing - E**

**PAPER PIECING**  
A,B

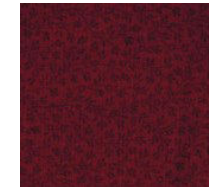


Piecing—E

A,B

SOME OF YOUR FABRICS  
MAY BE DIFFERENT  
FROM THOSE PICTURED  
BUT WILL BE SIMILAR.

## City Streets Block #20



Piecing— D

**PAPER PIECING-**  
A,B,C,D ,



Piecing—E,F

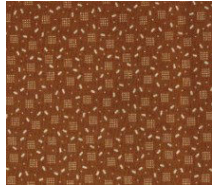
A,B,C,D



# BIBLE SAMPLER 2019

Month #3 MAY  
BLOCKS #21-24

## COFFIN STAR Block #21



Piecing- A



Piecing- B



Piecing - B

A,D,E,F

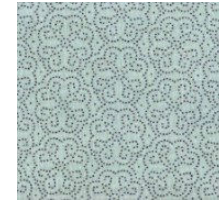
**PAPER PIECING-**  
A,B,C,D,

A,B,C,D

## CORNERSTONE Block #22



Piecing - A,C

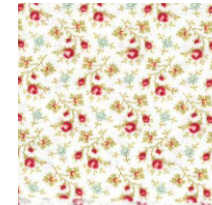


Piecing - B

**PAPER PIECING**  
A,B,C

A,B,C

AS AN EXTRA FEATURE WE WERE ADDING THE BLOCK PICTURES FOR REFERENCE BUT NOW THAT YOU ARE GETTING THE HANG OF HOW THE PATTERNS WORK WE WILL NO LONGER BE ADDING THAT FEATURE TO YOUR FABRIC KEYS



Piecing- C



Piecing—D

**PAPER PIECING**  
D,E,F,G

B,C

## CROSS Block #23



Piecing - A,B,C,E,F



Piecing - B,E



Piecing—B,E

A,B,C

**PAPER PIECING-**  
A,B,C

A,B,C

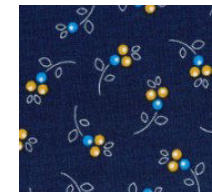
## CROWN OF THORNS Block #24



Piecing - A,E



Piecing - B,C,D,E



Piecing - C

A,B,C,D,E

**PAPER PIECING-**  
B,C,D,E

B,C,D,E

