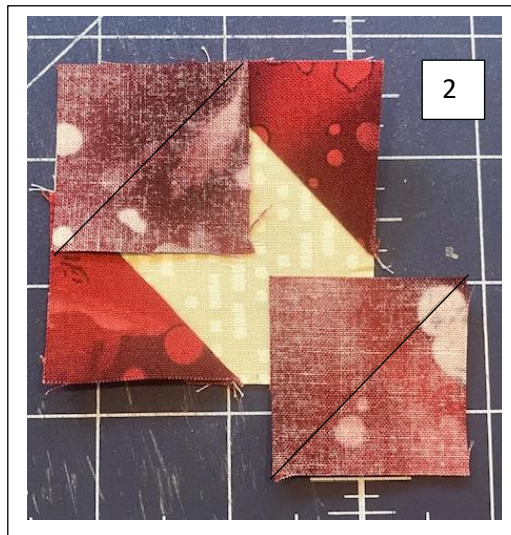
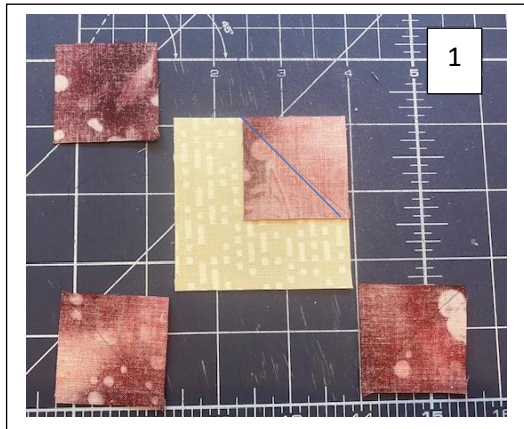


Boho Heart by Jen Kingwell

Month 11

General Tips:

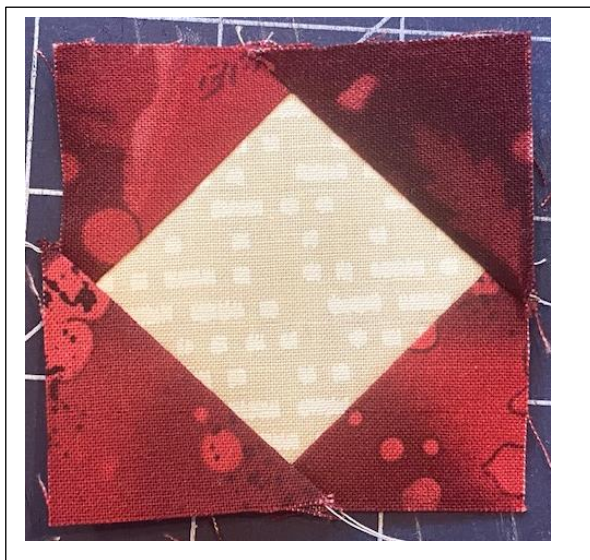
1. When following the book, an accurate $\frac{1}{4}$ " seam is needed. Check you seams to make sure they are $\frac{1}{4}$ " and if the $\frac{1}{4}$ " is off, adjust before proceeding. Also be careful to make accurate diagonal cuts when instructed.
2. If you follow the instructions in the book, you are cutting on a bias edge. I suggest using starch to reduce the stretching.
3. Some of the fabrics had more shrinkage than others so I suggest preshrinking all the fabric. I do this by spraying the fabric completely with Best Press or your preferred brand but you could also use water. I use Best Press since it also helps with the bias edges.

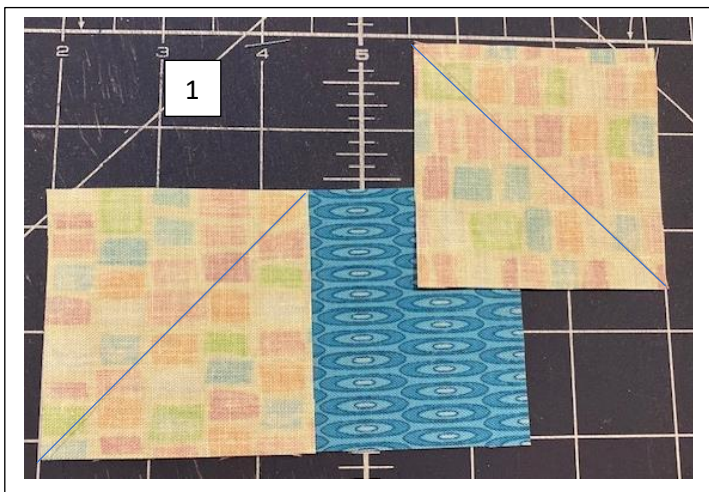
2" Square in a Square Block:

1. Draw a diagonal line on the 1 $\frac{1}{2}$ " bright pink squares.

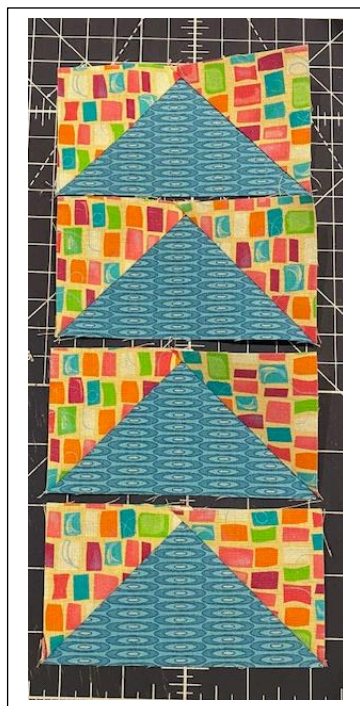
2. Place on corners and sew on the line. TIP: Before trimming, make sure the corner lines up with the 2 $\frac{1}{2}$ " block.

3. Continue until all 4 corners are done.

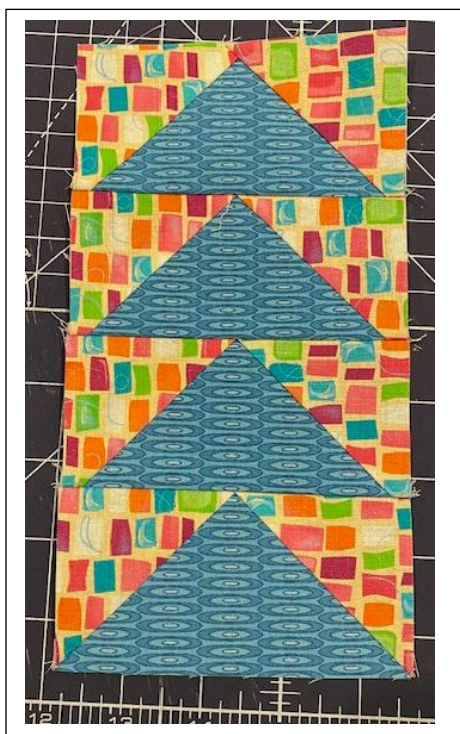




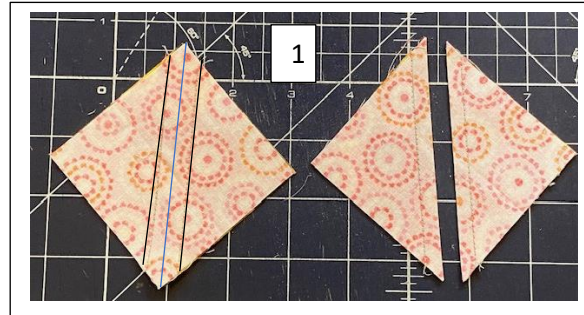
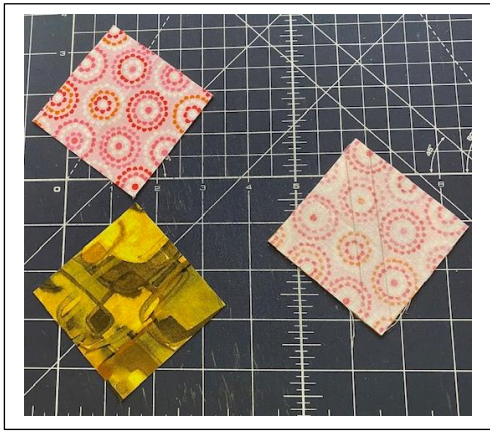
1. Draw a diagonal line across the 2 ½" light print squares.
2. Place on the corners of the 2 ½" x 4 ½" dark print. Pay attention to the angles shown. Sew on the drawn line.
3. Iron open and place another light print block as shown. Sew on the drawn line.
4. Place blocks as shown.
5. Sew 4 flying geese together to complete the block.



4



6" Churn Dash Block:



Note: Half Square Blocks should be $2\frac{1}{2}$ ".

1. Place the center line on diagonal corners and draw a line on the edge of the ruler from either side. A ruler such as the Magic Wand or another brand can be used. If you don't have the ruler, you can draw the diagonal line then another line $\frac{1}{4}$ " from the center line.

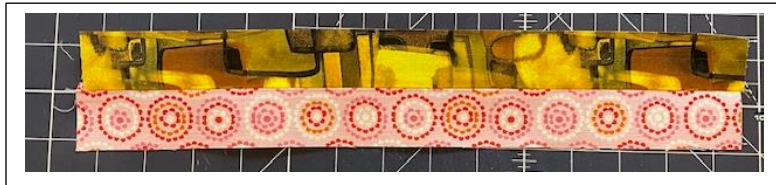
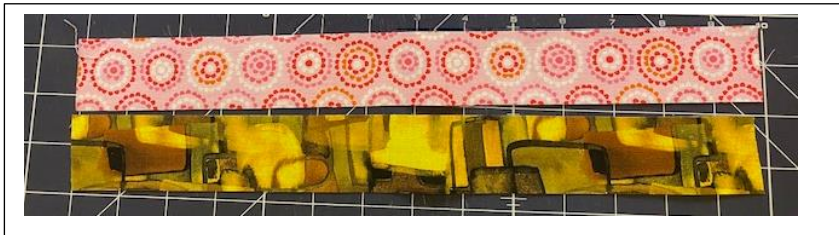
2. Sew on the black lines and cut on the blue line (center line).

3. Sew the $1\frac{1}{2}$ " x 12" strips together. Cut these into $2\frac{1}{2}$ " segments.

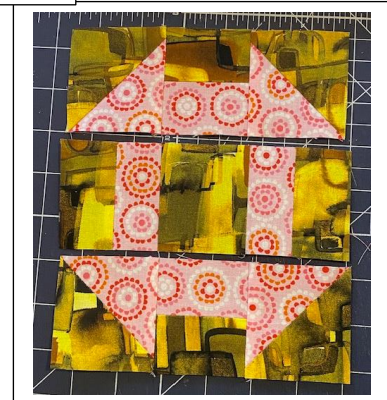
4. All blocks will be $2\frac{1}{2}$ " squares. Place as shown.

5. Sew into 3 rows.

6. Sew rows together.



5-6



8" Centered Dresden Square Block:



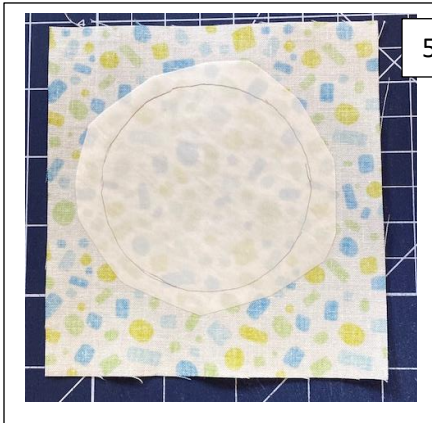
2



1. Cut out from the templates.
2. Place in the order shown.
3. Make 4 sets.
4. Sew the sections into a circle.
5. Use the template to make the circle for the center. I used raw edge applique and Hot Fix to attach it to the center. NOTE: If you use Hot Fix on the entire circle, make sure you have fabric on the other side. If you don't want to do that, only have the Hot Fix on the edge of the circle.
6. Center the middle circle and trim to 8 1/2".



3-4



5



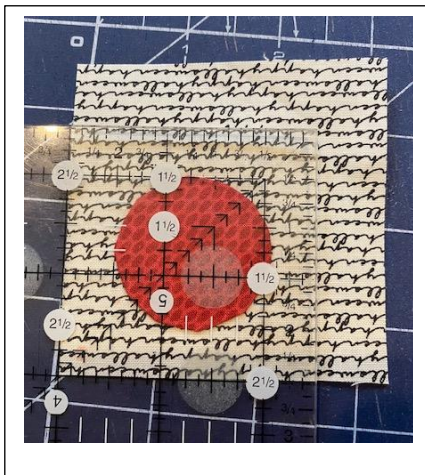
6



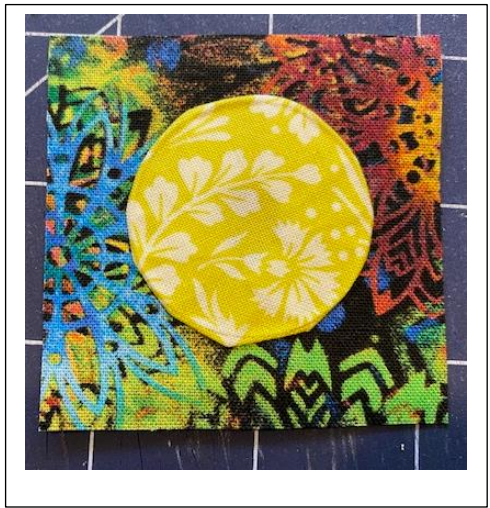
2" Mini Circle Block: This one is applique. Use your preferred method. The raw edge applique method and the method using Applipops is shown.



1. If you choose the Applipop method, choose the applipops closest to the pattern.
2. Place the smaller circle that matches the pattern underneath.
3. Place the larger circle on top.
4. Starch and iron excess to the middle.
5. Let it cool and then fuse to the background.
6. Trim the block to 2 1/2".



Second block



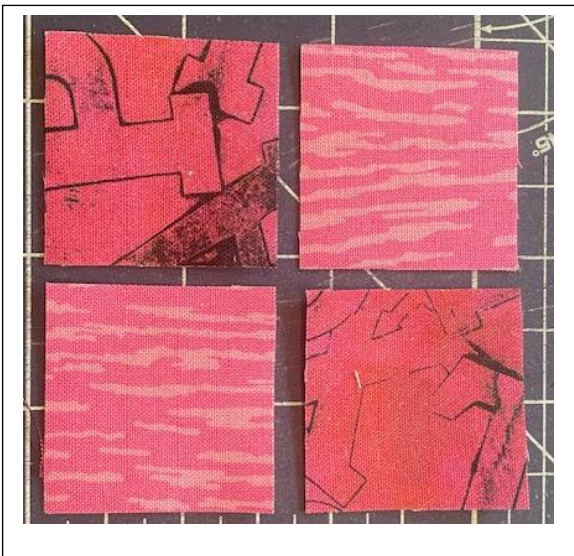
6" Courthouse Steps Block:



1. Add the yellow side strips to the center square.
2. Add the yellow top and bottom strips.
3. Add the red side strips to the center square.
4. Add the red top and bottom strips.



2" Four Patch Block:



1. Place blocks as shown.
2. Sew into 2 rows.
3. Sew the rows together.

