

## Boho Heart by Jen Kingwell

Month 9

## General Tips:

1. When following the book, an accurate  $\frac{1}{4}$ " seam is needed. Check you seams to make sure they are  $\frac{1}{4}$ " and if the  $\frac{1}{4}$ " is off, adjust before proceeding. Also be careful to make accurate diagonal cuts when instructed.
2. If you follow the instructions in the book, you are cutting on a bias edge. I suggest using starch to reduce the stretching.
3. Some of the fabrics had more shrinkage than others so I suggest preshrinking all the fabric. I do this by spraying the fabric completely with Best Press or your preferred brand but you could also use water. I use Best Press since it also helps with the bias edges.

**6" Small Sawtooth Star Block:**

1



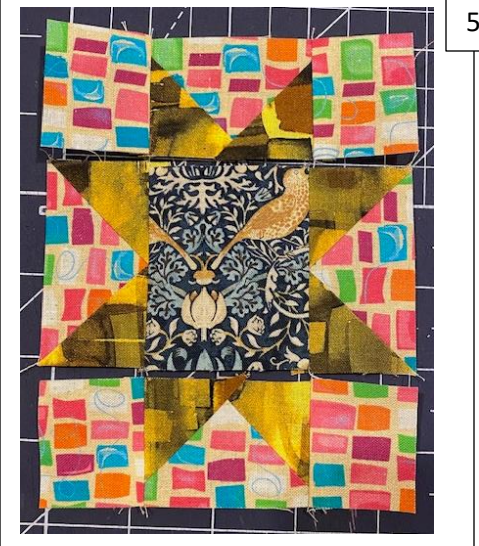
2



4



5



1. Draw a diagonal line across the  $1\frac{1}{2}$ " gold squares.
2. Place on the corners of the  $1\frac{1}{2}$ " x  $2\frac{1}{2}$ " light print. Pay attention to the angles shown. Sew on the drawn line.
3. Iron open and place another gold block as shown. Sew on the drawn line.
4. Place blocks as shown.
5. Sew into 3 rows.
6. Sew rows together.







2

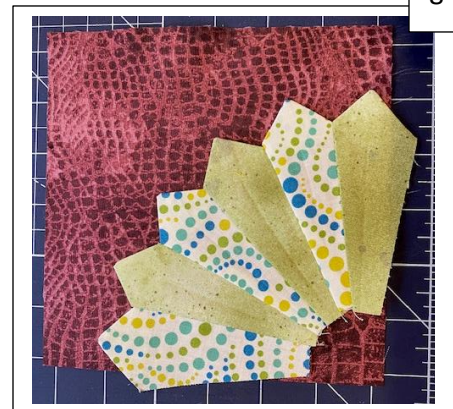
1. Cut out from the templates. I use thick plastic to make my templates.
2. Fold each piece in half as shown.
3. Stitch  $\frac{1}{4}$ " from bottom on the wide side.
4. Clip the corner as shown.
5. Turn inside out and press.
6. Sew the sections into the fan shape.
7. Use the template to make the  $\frac{1}{4}$  circle for the center. I used raw edge applique and Hot Fix to attach it to the center.
8. Applique to the background.
9. Add the  $\frac{1}{4}$  circle center to the corner of the block.
10. Trim the excess from the fan by trimming off anything over the  $6\frac{1}{2}$  square.



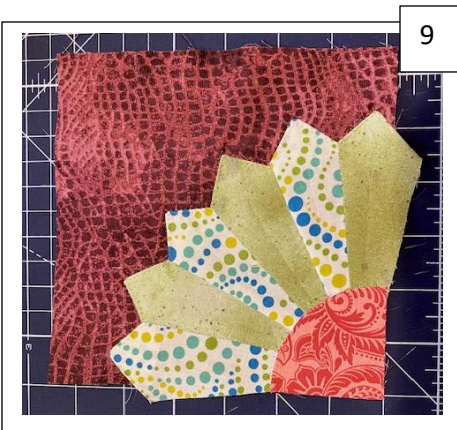
3



5



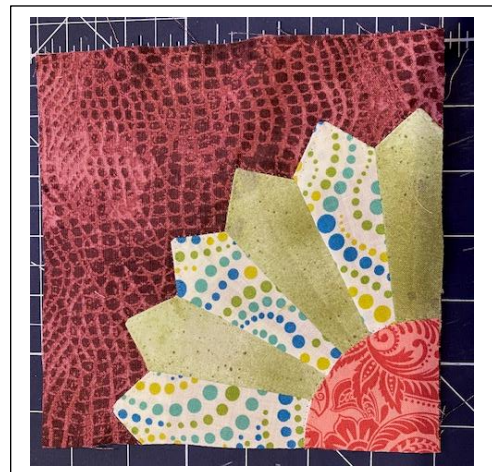
8



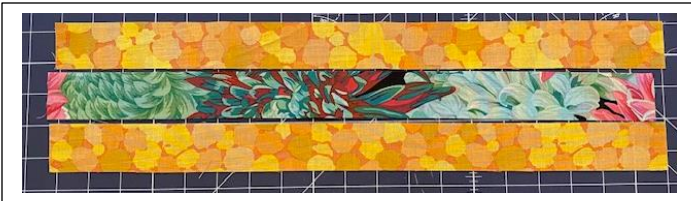
9



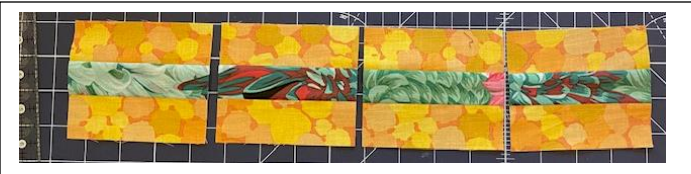
10





**10" Intersection Block:**

1



2



4



3



5



6



7

1. Sew the three 1 1/2" strips lengthwise as shown.

2. Cut into four (4) 4" segments.

3. For the center, sew the bright multicolor print and pink 1 1/2" squares as shown.

4. Add the 4" bright multicolor print square to the 4" segment from step 2. Make 2 of these.

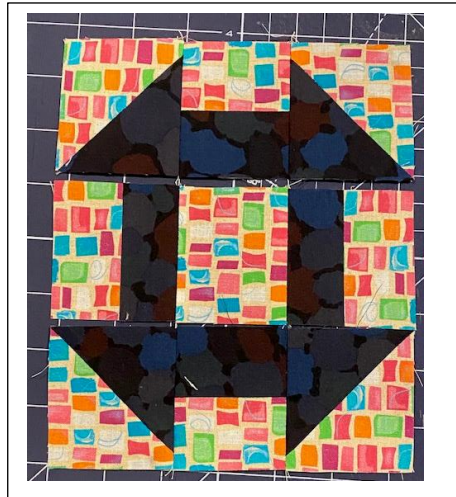
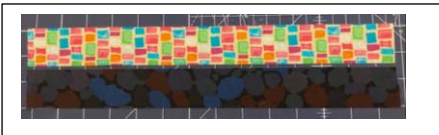
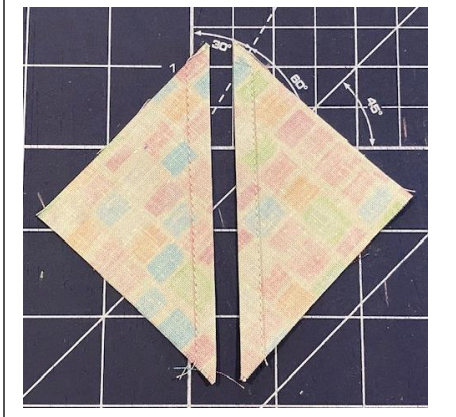
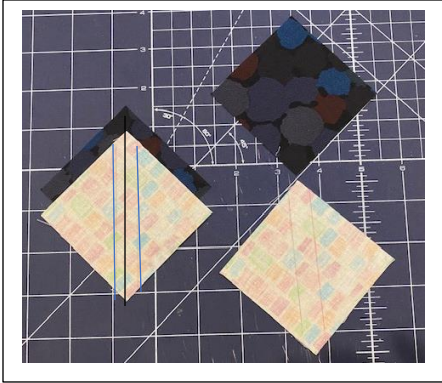
5. Add 2 segments from step 2 to the center block created in step 3.

6. Place the 3 strips as shown.

7. Sew the rows together.

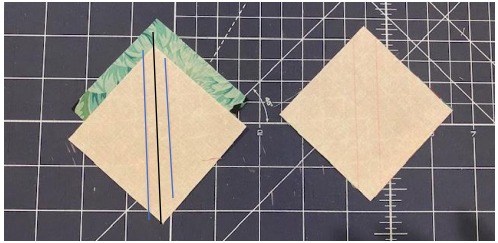


**6" Churn Dash Block:** There are instructions for trimming down if preferred. If you would like to do that, cut at least 1/8" bigger than the pattern. This is optional. I cut 3" squares for these and trimmed down at the end. See Month 1 for trimming down instructions.

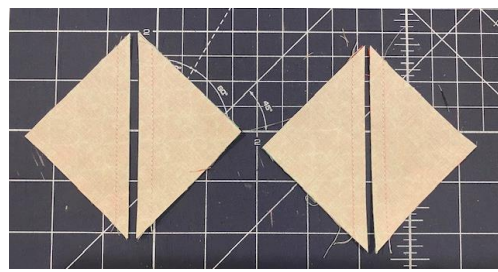


1. Half Square Blocks should be 2 1/2".
2. Place the center line on diagonal corners and draw a line on the edge of the ruler from either side. A ruler such as the Magic Wand or another brand can be used. If you don't have the ruler, you can draw the diagonal line then another line 1/4" from the center line.
3. Sew on the blue lines and cut on the black line (center line).
5. Sew the 1 1/2" x 12" strips together. Cut these into 2 1/2" segments.
6. All blocks will be 2 1/2" squares. Place as shown.
7. Sew into 3 rows.
6. Sew rows together.

**4" Pinwheel Block:** There are instructions for trimming down if preferred. If you would like to do that, cut at least 1/8" bigger than the pattern. This is optional. I cut 3" squares for these and trimmed down at the end. See Month 1 for trimming down instructions.



2-3



1. Half Square Blocks should be 2 1/2".

2. Place the center line on diagonal corners and draw a line on the edge of the ruler from either side. A ruler such as the Magic Wand or another brand can be used. If you don't have the ruler, you can draw the diagonal line then another line 1/4" from the center line.

3. Sew on the blue lines and cut on the black line (center line).

4. Sew into 2 rows.

5. Sew rows together.

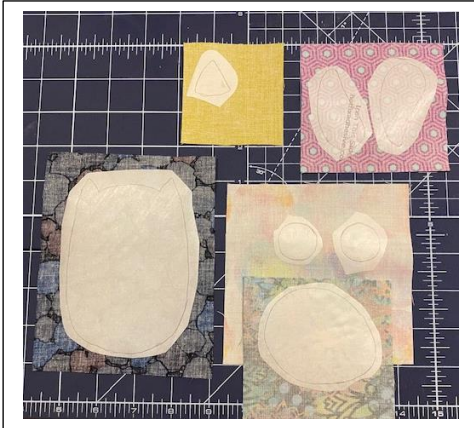


4

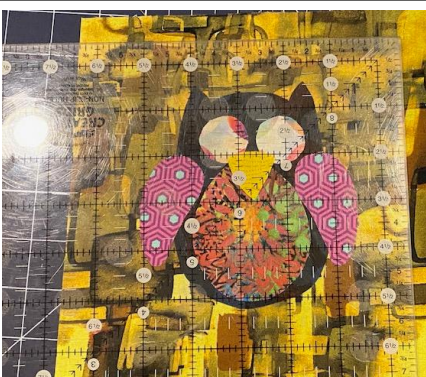
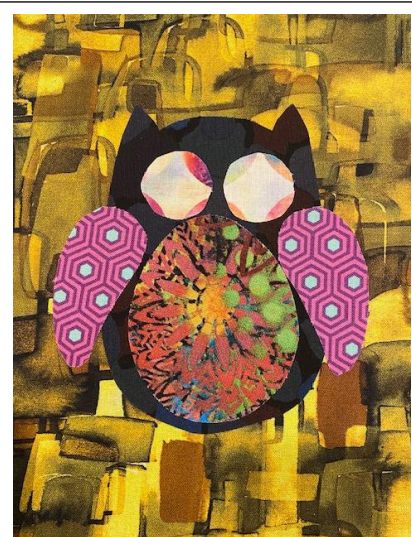
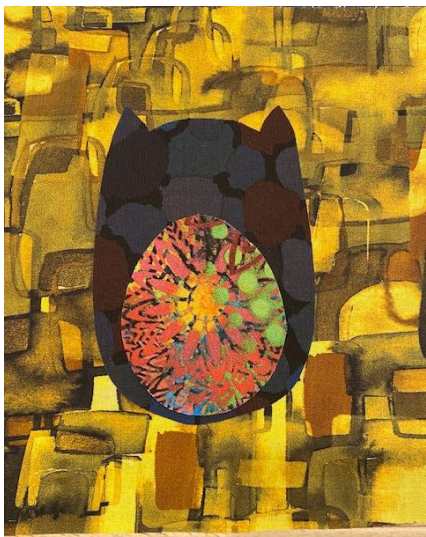




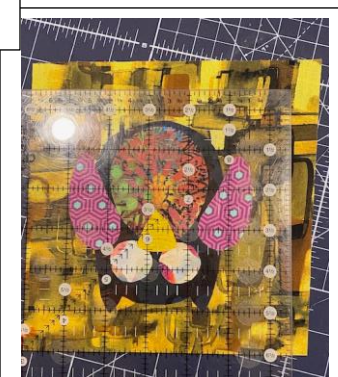
**6" Owl Block:** This one is applique. Use your preferred method. Raw Edge Applique was used here due to the shape. Follow your products instructions for fusing. Hot fix fusible was used in this block.



1. Trace onto fusible of your choice.
2. Fuse the fusible to the wrong side of fabric.
3. Cut out the pattern and fuse to the background as shown.
4. Trim the background to 6 1/2".



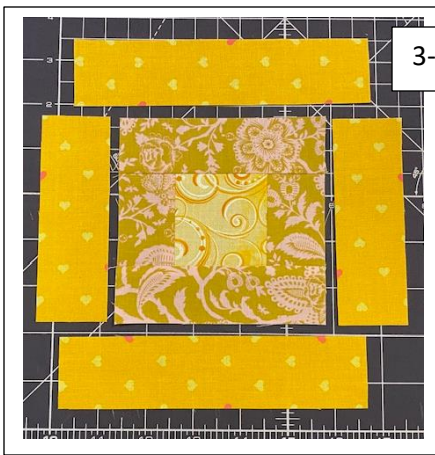
4





**8" Courthouse Steps Block:**

1-2



3-4

1. Add the green side strips to the center square.
2. Add the green top and bottom strips.
3. Add the gold print side strips to the center square.
4. Add the gold print top and bottom strips.
5. Add the pink side strips to the center square.
6. Add the pink top and bottom strips.



5-6

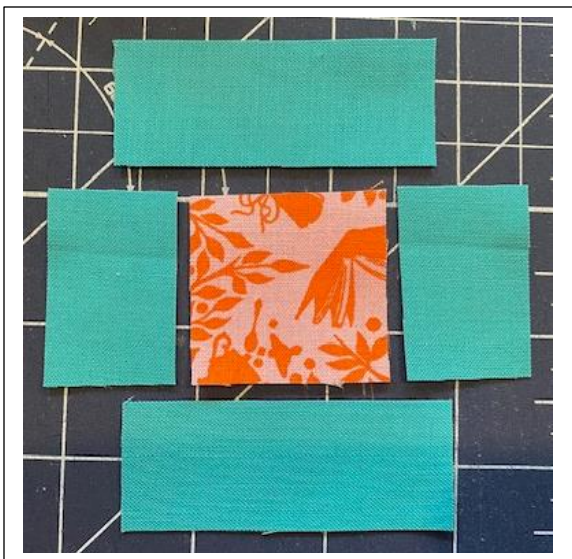


## 6" Simple Framed Square Block:



1. Add the side strips to the center square.
2. Add the top and bottom strips.

## 2" Mini Framed Square Block:

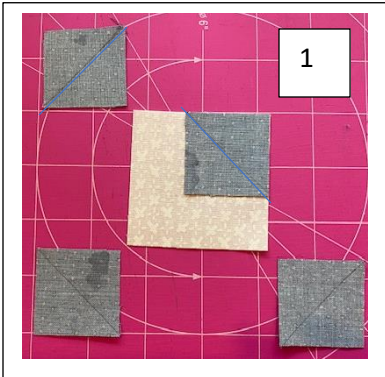


1. Add the side strips to the center square.
2. Add the top and bottom strips.





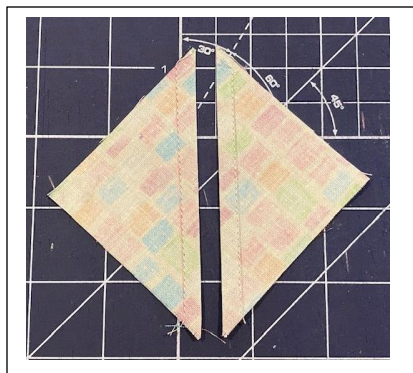
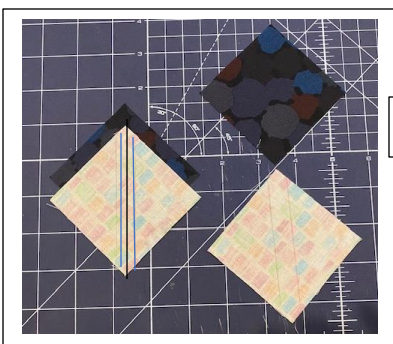
**2" Square in a Square Block:**



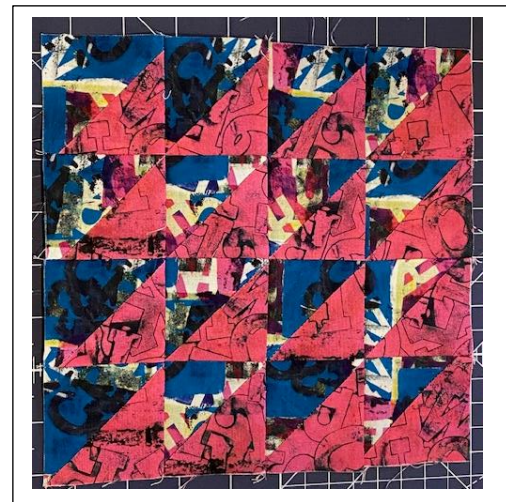
1. Draw a diagonal line on the 1 1/2" yellow squares.
2. Place on corners and sew on the line. TIP: Before trimming, make sure the corner lines up with the 2 1/2" block.
3. Continue until all 4 corners are done.



**8" Half Square Triangles Block:** There are instructions for trimming down if preferred. If you would like to do that, cut at least 1/8" bigger than the pattern. This is optional. I cut 3" squares for these and trimmed down at the end. See Month 1 for trimming down instructions.



1. Half Square Blocks should be 2 1/2".
2. Place the center line on diagonal corners and draw a line on the edge of the ruler from either side. A ruler such as the Magic Wand or another brand can be used. If you don't have the ruler, you can draw the diagonal line then another line 1/4" from the center line.
3. Sew on the blue lines and cut on the black line (center line).
4. Sew into 4 rows of 4 HST.
5. Sew rows together.





## 8" Flying Geese Block:



1-3



1. Draw a diagonal line across the 2 ½" pink squares.
2. Place on the corners of the 2 ½" x 4 ½" medium blue print. Pay attention to the angles shown. Sew on the drawn line.
3. Iron open and place another pink block as shown. Sew on the drawn line.
4. Place blocks as shown.
5. Sew into 4 flying geese blocks consisting of 2 flying geese each.
6. Sew into 2 rows.
7. Sew rows together.



5



6



7







The filler blocks are reversed in this picture.

Finishing Month 8:

Section 2 Left side:

1. Sew the gold filler to the Sawtooth Star block.
2. Sew the section from step 1 to the Dresden Fan block.
3. Sew the section from step 2 to the Intersection block.

Section 2 Right side:

4. Sew the gold filler to the Pinwheel block.
5. Sew the Churn Dash block to the Owl block.
6. Sew the section created in step 4 and 5 together.

7. Sew the left side to the right side of Section 2.

Section 3:

8. Sew the 6 ½" filler block to the Simple Framed Square block.
9. Sew the 4 ½" filler block to the Mini Framed Square block and Square in a Square block.

10. Sew the section from 8 and 9 together.

11. Sew the section from step 10 to the Courthouse Steps block.

Section 4:

12. Sew the HST block to the Flying Geese block.
13. Sew Sections 2, 3 and 4 together.

