

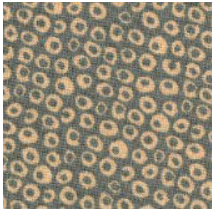
CABIN FEVER 2018

Month #3 OCTOBER

BLOCK #3



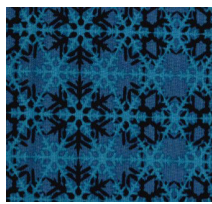
FABRIC B
5 X 40
Log cabins



FABRIC C
5 X 40
Log cabins



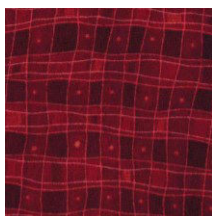
CORNER SQUARES
14 X 14



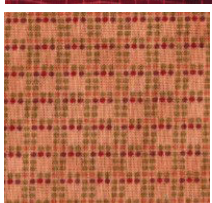
TEMPLATE A
CIRCLE BACKGROUND
14 X 10



INNER CIRCLE
TEMPLATE B
7 X 7
1 applique circle OR
4 part pieced circle



TEMPLATE H
(To make 9 pink/purple
patches-star points)
2 1/2 x 20



TEMPLATE H
(To make 3 orange patches -
Star points)
2 1/2 x 7



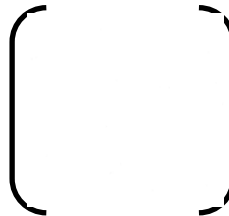
TEMPLATE H
(To make 3 blue patches-
patches between points)
3 x 10



TEMPLATE H
(To make 6 green patches-
patches between points)
3 x 20



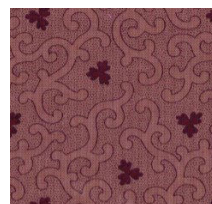
TEMPLATE H
(To make 3 pink patches-
patches between points)
3 x 10



TEMPLATE H & I
(To make white background
patches)
6 x 40



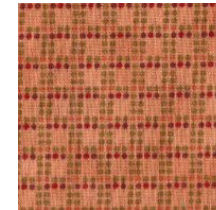
TEMPLATE I
(To make 4 yellow background
patches)
3 x 10



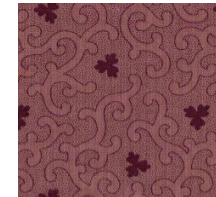
TEMPLATE I
(To make 4 purple background
patches)
3 x 11



TEMPLATE I
(To make 9 purple/pink (star)
patches-star bottoms)
6 x 14



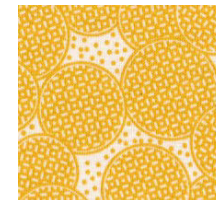
TEMPLATE I
(To make 3 orange (star) patches-
star bottoms)
3 1/2 x 10



TEMPLATE J
(To make one J)
5 x 5



TEMPLATE J
(To make one J)
5 x 5



TEMPLATE J
(To make one J)
5 x 5



TEMPLATE J
(To make one J)
5 x 5



CABIN FEVER 2018

Month #3 OCTOBER

BLOCK #3



Paper pieced - traditional pieced

A1
LOG CABIN
2 1/2 X 40

A



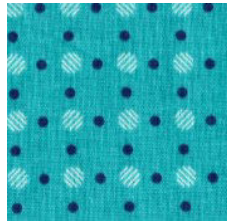
A2
LOG CABIN
2 1/2 X 40

C



A3
LOG CABIN
2 1/2 X 40

E



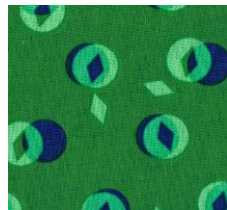
A 4
LOG CABIN
2 1/2 X 40

G



A 5
LOG CABIN
4 X 40

I



A6
LOG CABIN
5 X 40

K

