

CIVIL WAR 2017

Month #4 JULY
BLOCKS #13-16

LONDON SQUARE Block #13



4 LIGHT B



2 MED B
1 MED F



2 DARK B
1 DARK F

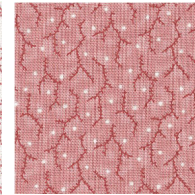
ROSEBUD Block #14



2 DARK C



6 LIGHT G



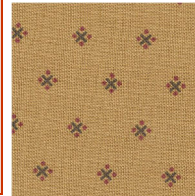
4 DARK G



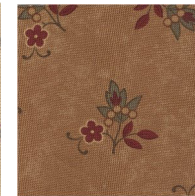
2 MED H

DON'T FORGET TO WATCH YOUR CUTTING INSTRUCTIONS. YOU WILL BE STARTING A NEW SECTION FOR BLOCK #16. YOUR CUTTING MEASUREMENTS WILL CHANGE!! THEY WON'T BE THE SAME AS IN THE FRONT OF THE BOOK. THEY WILL BE STATED ON EACH PAGE FOR EACH BLOCK BEGINNING WITH BLOCK #16.

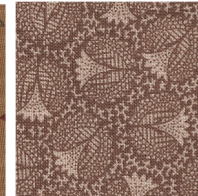
TENNESSEE Block #16



3 LIGHT B
2 LIGHT A
1 MED A



1 DARK B



1 DARK B



1 DARK B

APPLE TREE Block #15



6 LIGHT A



2 RED A



4 DARK A



1 LIGHT B



1 DARK I



903-638-6915

bomhq@stitchinheaven.com

CIVIL WAR 2017

Month #4 JULY
BLOCKS #13-16

LONDON SQUARE
Block #13



ROSEBUD
Block #14



APPLE TREE
Block #15



TENNESSEE
Block #16

