

CIVIL WAR SAMPLER 2017

Month #4 JULY
BLOCKS 13-16

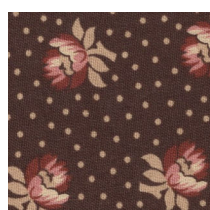
LONDON SQUARE Block #13



4 LIGHT B



2 MEDIUM B
1 DARK F



2 DARK B
1 MEDIUM F

APPLE TREE Block #15



6 LIGHT A



4 DARK A



2 RED A



1 LIGHT B



1 DARK I

**DON'T FORGET TO WATCH YOUR CUTTING INSTRUCTIONS.
YOU WILL BE STARTING A NEW SECTION FOR BLOCK #16.
YOUR CUTTING MEASUREMENTS WILL CHANGE!!
THEY WON'T BE THE SAME AS IN THE FRONT OF THE BOOK.
THEY WILL BE STATED ON EACH PAGE FOR EACH BLOCK
BEGINNING WITH BLOCK #16.**

ROSEBUD Block #14



2 DARK C



6 LIGHT G

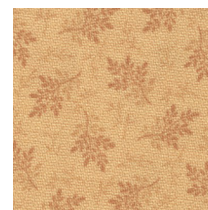


4 DARK G



2 MEDIUM H

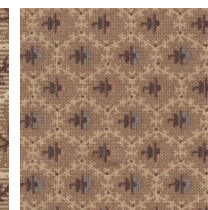
TENNESSEE Block #16



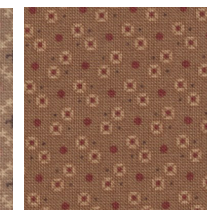
2 LIGHT A
1 MEDIUM A
3 LIGHT B



1 DARK B



1 DARK B



1 DARK B



CIVIL WAR SAMPLER 2017

Month #4 JULY
BLOCKS 13-16

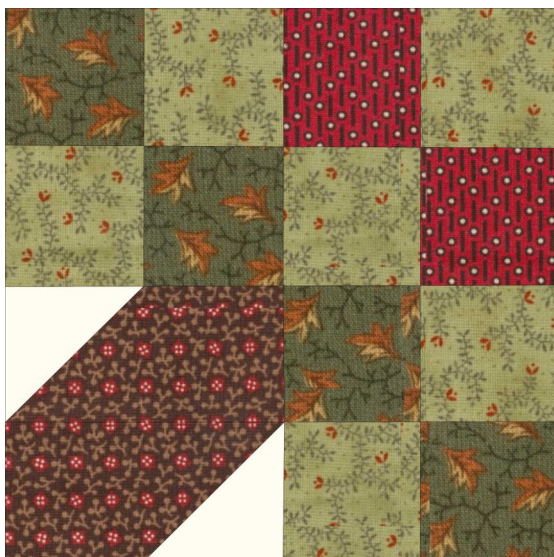
LONDON SQUARE
Block #13



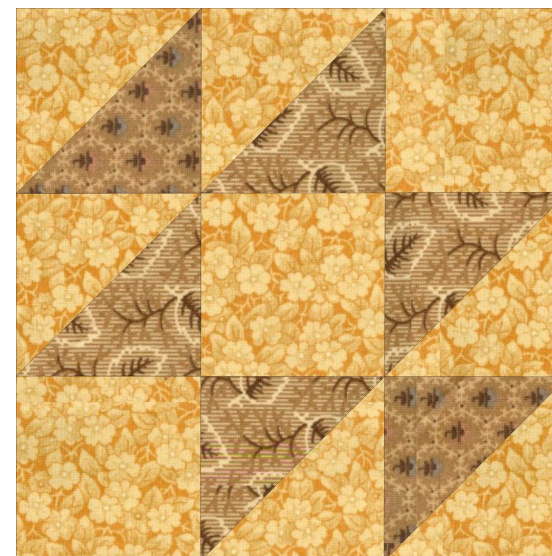
APPLE TREE
Block #15



ROSEBUD
Block #14



TENNESSEE
Block #16



903-638-6915
bomhq@stitchinheaven.com