

# CIVIL WAR SAMPLER

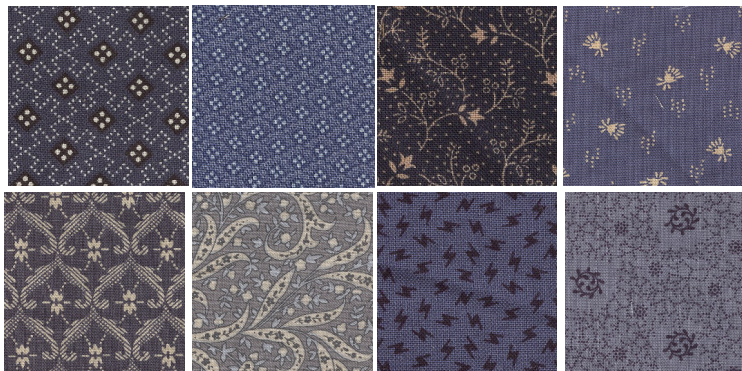
## THE COMFORT QUILT BLOCK #23



4 LIGHT B



4 LIGHT C



EACH BLUE IS FOR 1 DARK A



1 DARK D

## Month #6 Blocks #21-24

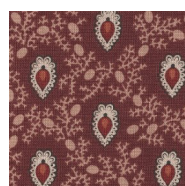
## RICHMOND BLOCK #21



1 DARK A  
4 DARK C



2 MED LT B



2 MED DK B  
2 MED C



8 LIGHT D

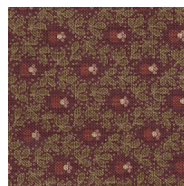


8 MED D

4 LIGHT A  
4 LIGHT B



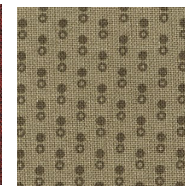
4 MED A



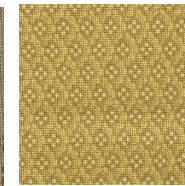
4 DARK B



4 MED DK C



4 MED C



1 MED D

## PINWHEEL BLOCK #22



2 LIGHT B  
4 MED LIGHT A



4 MED A



1 MED DARK C  
2 DARK B

## NEW ENGLAND BLOCK #24





# CIVIL WAR SAMPLER

Month #6  
Blocks #21-24

**RICHMOND  
BLOCK #21**



**PINWHEEL  
BLOCK #22**



**THE COMFORT QUILT  
BLOCK #23**



**NEW ENGLAND  
BLOCK #24**



903-638-6915 ext 105  
[bomhq@stitchinheaven.com](mailto:bomhq@stitchinheaven.com)