

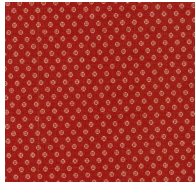
CIVIL WAR 2017

Month #4 SEPTEMBER BLOCKS #13-16

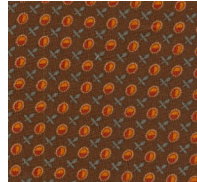
LONDON SQUARE Block #13



4 LIGHT B

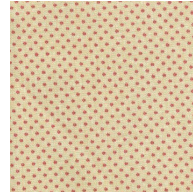


2 MED B
1 MED F



2 DARK B
1 DARK F

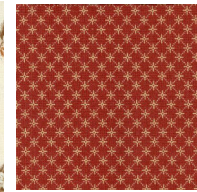
ROSEBUD Block #14



6 LIGHT G



2 DARK C



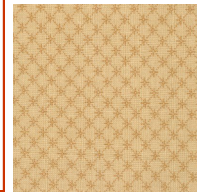
4 DARK G



2 MED H

**DON'T FORGET TO WATCH YOUR CUTTING INSTRUCTIONS.
YOU WILL BE STARTING A NEW SECTION FOR BLOCK #16.
YOUR CUTTING MEASUREMENTS WILL CHANGE!!
THEY WON'T BE THE SAME AS IN THE FRONT OF THE BOOK.
THEY WILL BE STATED ON EACH PAGE FOR EACH BLOCK
BEGINNING WITH BLOCK #16.**

TENNESSEE Block #16



3 LIGHT B
2 LIGHT A
1 MED A



1 DARK B

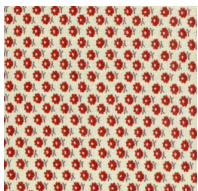


1 DARK B



1 DARK B

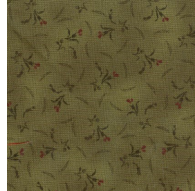
APPLE TREE Block #15



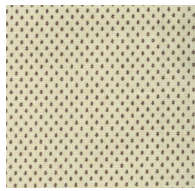
6 LIGHT A



2 RED A



4 DARK A



1 LIGHT B



1 DARK I



CIVIL WAR 2017

Month #4 SEPTEMBER
BLOCKS #13-16

LONDON SQUARE
Block #13



ROSEBUD
Block #14



APPLE TREE
Block #15



TENNESSEE
Block #16



903-638-6915 ext 105
bomhq@stitchinheaven.com