

CIVIL WAR SAMPLER 2019

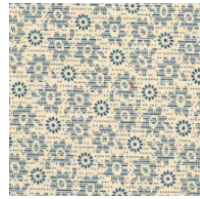
HOVERING HAWKS Block #5



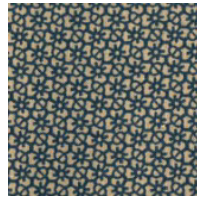
4 MED LIGHT A



2 DARK A



3 LIGHT B

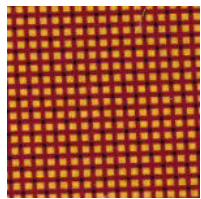


2 MED LIGHT B

Month #2 BLOCKS #5-8



2 MED LIGHT B

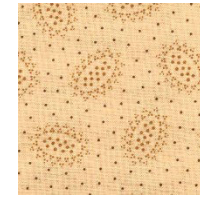


2 MED B



1 DARK B

STRENGTH IN UNION Block #7



8 WHITE A



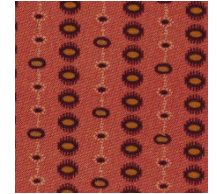
1 RED B



1 RED B

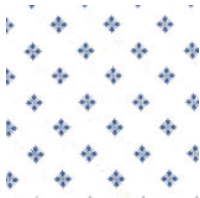


1 RED B



1 RED B

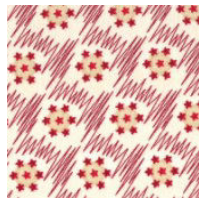
PORT & STARBOARD Block #6



4 LIGHT B



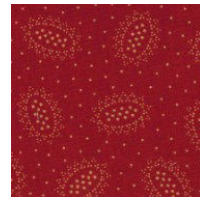
3 LIGHT B



1 LIGHT B



4 MED B



3 DARK B

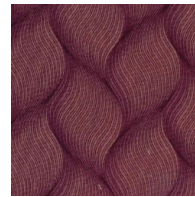


1 DARK B

REMEMBER—
You are making the
8 1/2" block.
Do not trim to 8".

Cutting measurements are
in the front of the book.

Some of the fabrics may
look a little different from
the ones pictured here,
but will be similar.



1 BLUE B



1 BLUE B



1 BLUE B



1 BLUE B

FOX & GEESE Block #8



4 MED LIGHT A
2 MED LIGHT B



2 LIGHT B
1 LIGHT C



1 MED C



CIVIL WAR SAMPLER 2019

Month #2
BLOCKS 5-8

HOVERING HAWKS
Block #5



STRENGTH IN UNION
Block #7



PORT & STARBOARD
Block #6



FOX & GEESE
Block #8



903-638-6915 ext 105
bomhq@stitchinheaven.com