

CIVIL WAR SAMPLER

Month #4 BLOCKS #13-16

LONDON SQUARE Block #13



4 B

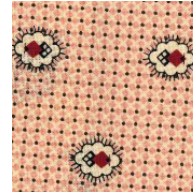


2 B
1 F



2 B
1 F

ROSEBUD Block #14



4 G



2 C



6 G



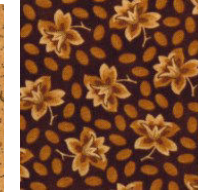
2 H

DON'T FORGET TO WATCH YOUR CUTTING INSTRUCTIONS. YOU WILL BE STARTING A NEW SECTION FOR BLOCK #16. YOUR CUTTING MEASUREMENTS WILL CHANGE!! THEY WON'T BE THE SAME AS IN THE FRONT OF THE BOOK. THEY WILL BE STATED ON EACH PAGE FOR EACH BLOCK BEGINNING WITH BLOCK #16.

TENNESSEE Block #16



3 B
2 A
1 A



1 B



1 B



1 B

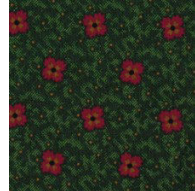
APPLE TREE Block #15



4 A



2 A



6 A



1 B



1 I



CIVIL WAR SAMPLER

Month #4
BLOCKS #13-16

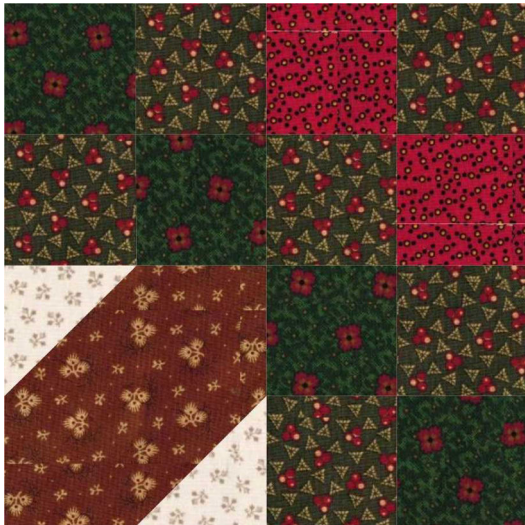
LONDON SQUARE
Block #13



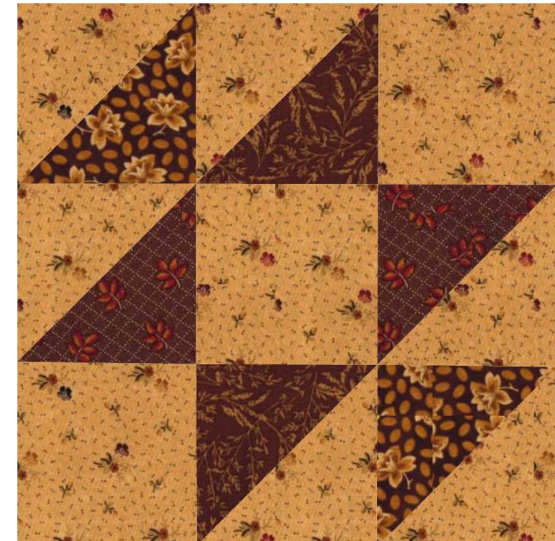
ROSEBUD
Block #14



APPLE TREE
Block #15



TENNESSEE
Block #16



903-638-6915 ext 105
bomhq@stitchinheaven.com