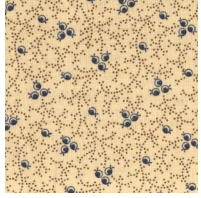


CIVIL WAR SAMPLER 2020

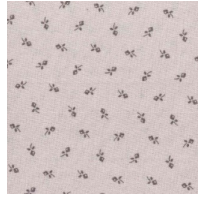
HOVERING HAWKS Block #5



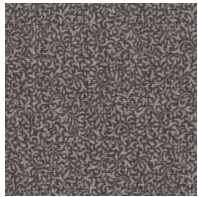
4 A



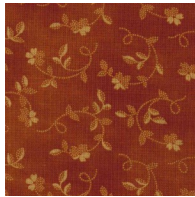
2 A, 1 B



3 B

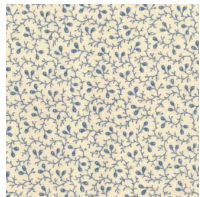


4B

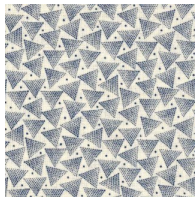


2 B

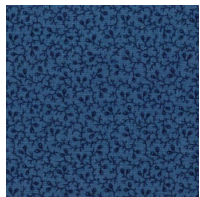
PORT & STARBOARD Block #6



4 B



4 B



4 B



4 B

Month #2 BLOCKS #5-8

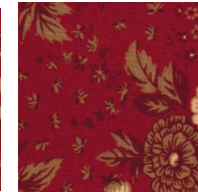
STRENGTH IN UNION Block #7



8 A



1 B



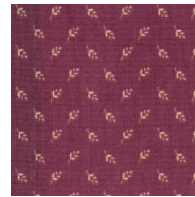
1 B



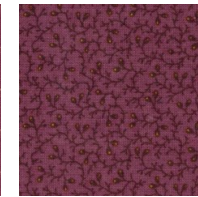
1 B



1 B



1 B



1 B



1 B



1 B

REMEMBER—
You are making the
8 1/2" block.
Do not trim to 8".

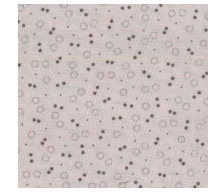
Cutting measurements are
in the front of the book.

Some of the fabrics may
look a little different from
the ones pictured here,
but will be similar.

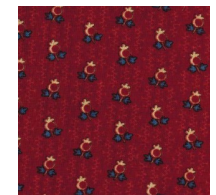
FOX & GEESE Block #8



4 A
2 B



2 B
1 C



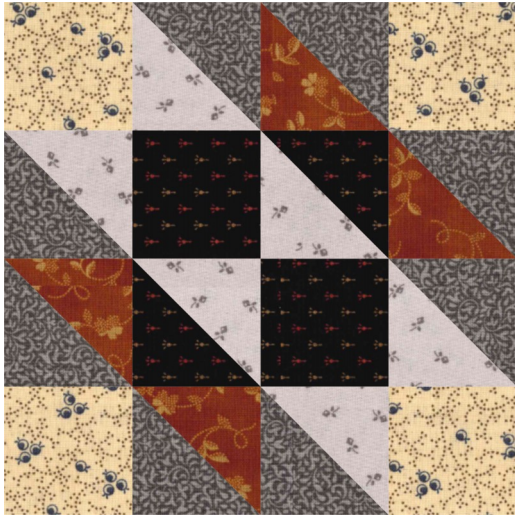
1 C



CIVIL WAR SAMPLER 2020

Month #2
BLOCKS 5-8

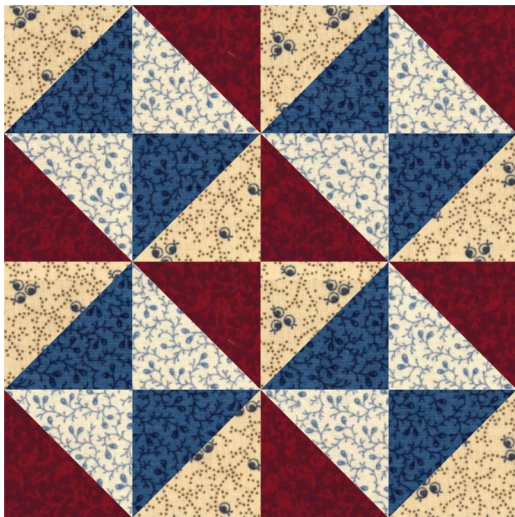
HOVERING HAWKS
Block #5



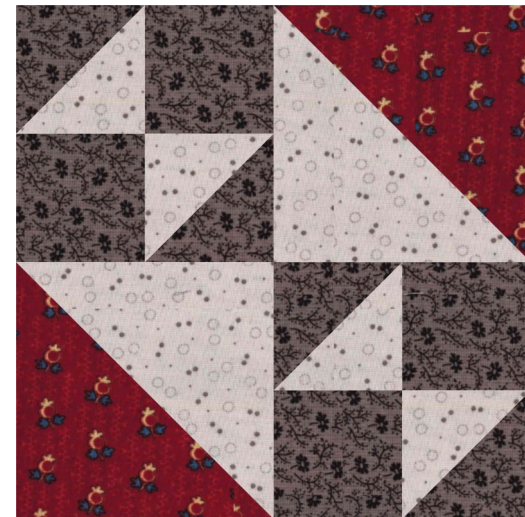
STRENGTH IN UNION
Block #7



PORT & STARBOARD
Block #6



FOX & GEESE
Block #8



903-638-6915 ext 105
bomhq@stitchinheaven.com