

Barbara Brackman's Civil War Sampler

Month 4 (Blocks 13-16)

General Tips:

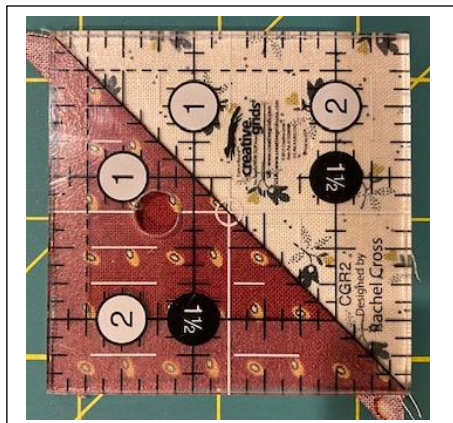
1. Cutting instructions for **Blocks 13-15** is on Page 6 of the pattern book. Some of the blocks could be cut larger and trimmed down. Since having an accurate  $\frac{1}{4}$ " seam is very important, I followed the cutting instructions in the book.
2. The cutting instructions in the book is based on the diagonal cuts and  $\frac{1}{4}$ " seam being accurate. On the blocks that can be checked, adjust your  $\frac{1}{4}$ " seam if the blocks are coming out the incorrect size. A scant  $\frac{1}{4}$ " seam worked best for me.
3. Many pieces are cut and sewn on a bias edge. I suggest using spray starch to reduce the stretching.
4. When making the diagonal cuts, try to be accurate since the diagonal cut can make the difference in the block coming together.
5. **Follow Cutting instructions on Page 37 for Block 16!!!!**

Block #13 London Square (Parenthesis shows what used in example)

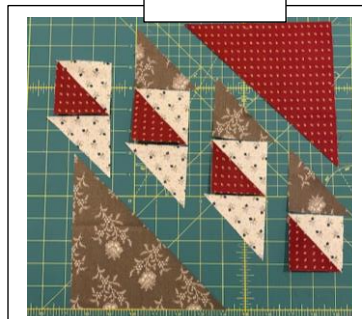
Cutting blocks	Based on pattern Page 6	
Gold (Brown)	6 7/8 x 6 7/8 cut diagonally	Discard one – only 1 needed
Gold (Brown)	(2) 2 7/8 x 2 7/8 cut diagonally	Discard one – only 3 needed
Light pink (Red)	6 7/8 x 6 7/8 cut diagonally	Discard one – only 1 needed
Light pink (Red)	(2) 2 7/8 x 2 7/8	4 needed
Yellow (Off white)	(4) 2 7/8 x 2 7/8	Discard one – only 7 needed



1. Take (4) Light pink triangles and (4) Yellow triangles and sew along the diagonal.
2. Blocks should measure 2 1/2". If the block doesn't measure 2 1/2", check the 1/4" seam.
3. Sew yellow or gold (see pattern) triangles to blocks created in step 1.
4. Sew the columns together.



Step 3



Step 4





1. Take the section created on the previous page with the larger triangles as shown.
2. There should be  $\frac{1}{4}$ " overhang on each side.
3. To keep the points, sew a thread away from the points. I used to pins to mark since I had ironed my seams open.
4. Block measures  $8\frac{1}{2}$ ".

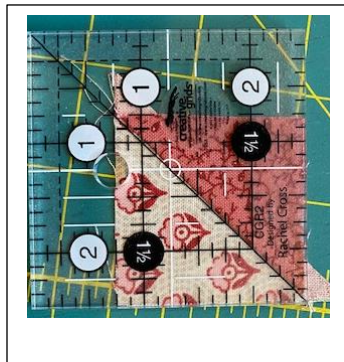


**Final London Square Block**



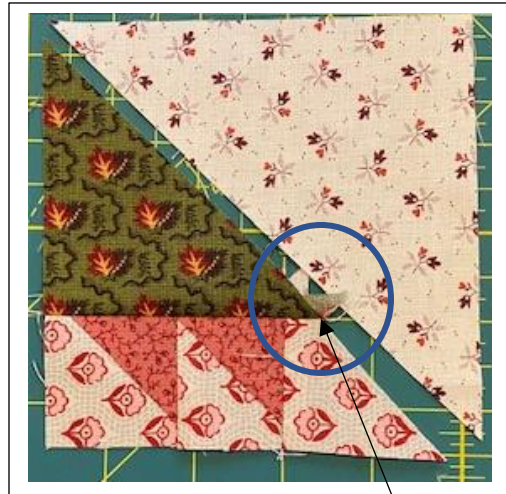
Block #14 Rosebud (Parenthesis shows what used in example)

Cutting blocks	Based on pattern <b>Page 6</b>	
Green Large Triangles (White)	(2) 4 7/8 x 4 7/8	Cut diagonally to get 4
Green Small Triangles (Red)	(4) 2 1/8 x 2 1/8	Cut diagonally to get 8
Yellow (White w/ Red)	(6) 2 1/8 x 2 1/8	Cut diagonally to get 12
Light pink (Green)	(2) 3 1/2 x 3 1/2	Cut diagonally to get 4



**Make 4 Blocks**

1. Sew (8) Yellow triangles and (8) Green small triangles. Squares should be between 1 3/4 to 1 7/8.
2. Sew squares created in Step 1 with Yellow triangle. Use a scant 1/4" seam.
3. Add the Light Pink triangles to step 2. Use a scant 1/4" seam here as well.



1/4" overhang





1. Add large green triangle to piece created on previous page. The pieced section should be the same size as the large green triangle. This section should be approximately 4 ½" square.
2. Sew into 2 rows.
3. Sew the rows together.



**Final Block 14 –  
Rosebud**

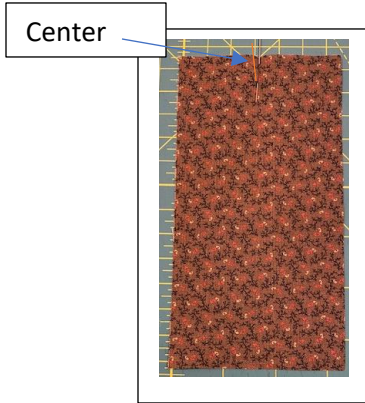


Block #15 Apple Tree

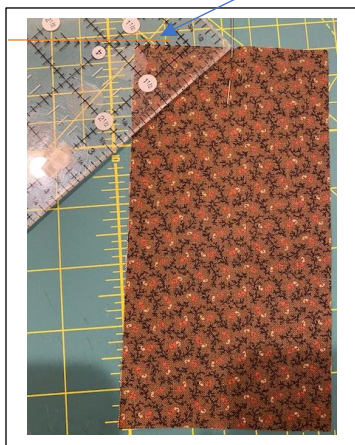
Cutting blocks	Based on pattern
Brown (Brown tree trunk)	3 3/8 x 6 3/8
Brown (Red Squares)	(2) 2 1/2 squares
Green (Green Squares)	(4) 2 1/2 squares
Yellow (Dark Green Squares)	(6) 2 1/2 squares



1. Take the 3 3/8 x 6 3/8 rectangle and mark the center on end. Use the diagonal line from the ruler to mark the 45 degree angle.
2. Trim the four corners off the rectangle.
3. Add the white triangles to the sides. There will be 1/4" overhang.
4. I had trouble getting this to be a 4 1/2" square. Using a scant 1/4" seam helped. I would do the alternative method below next time.



45 degree diagonal line







1. Sew the 2 1/2" squares into 4 patches.
2. Make two rows.
3. Sew the rows together to complete the block.



**Final Block 15 –  
Apple Tree**

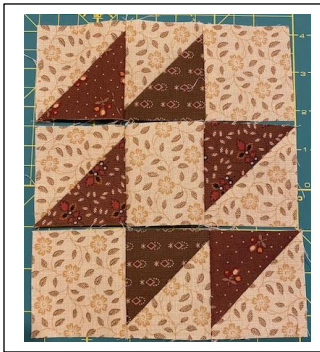


Block #16 – Tennessee **Cutting instructions are on page 37. Do not follow Page 6!!!!**

Cutting blocks	Based on pattern *see next page if trimming
Green (Cream)	3 1/8" square
Yellow (Cream)	(2) 3 1/8" squares (3) 3 1/2" squares cut diagonally
Brown (3 Brown fabrics)	One 3 1/2" squares cut diagonally from each color

**When making diagonally cuts, make sure you have the 3 1/2" squares**

1. Take (6) Brown triangles and (6) Yellow triangles and sew along the diagonal. The square should measure approximately 3 1/8".
2. Sew blocks as shown into 3 rows.
3. Sew the rows together to complete the block.



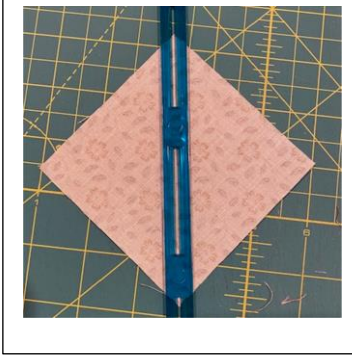
**Final Block 16 - Tennessee**



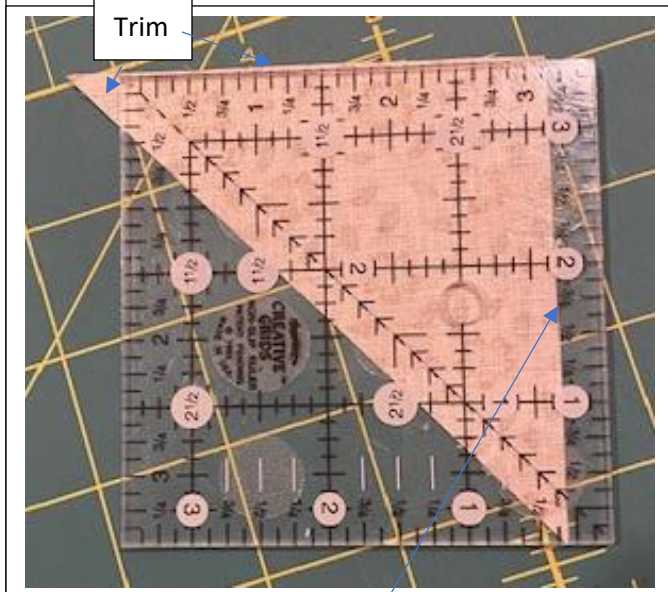


## Optional Trimming for Block 16 Tennessee Only:

Cutting blocks	Based on trimming
Yellow (Cream)	(3) 4" squares
Brown (3 Brown fabrics)	One 4" squares from each color



1. Cut the 3 1/2" pieces at 4" and do NOT cut diagonally.
2. Draw a 1/4" diagonal line from the center. This can be done by drawing a line down the center and another 1/4" from the diagonal line or by using a quick quarter ruler.
3. Sew on 1/4" line and cut down center diagonal line.
4. Line up diagonal line on ruler with sewn line. Trim on one side.
5. Line up trimmed side on 3 1/8" line and trim the other side.
6. Block measures 3 1/8"



Make sure fabric is over 3 1/8"

Line up on the 3 1/8" line

