

CIVIL WAR SAMPLER

Month #11
BLOCKS #41-44

INDIANA PUZZLE BLOCK #41



2 A
6 x 10

2 A
6 x 10

2 B
5 x 10

2 B
5 x 10

GRAPES OF WRATH BLOCK #42



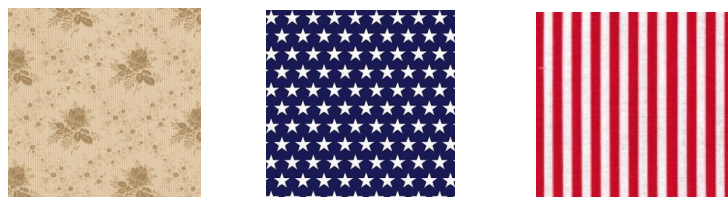
1 A
1 B
2 C
1 D
8 x 21

1 D
1 E
7 x 10

3 E
12 x 5

2 E
8 x 5

UNION SHIELD BLOCK #43

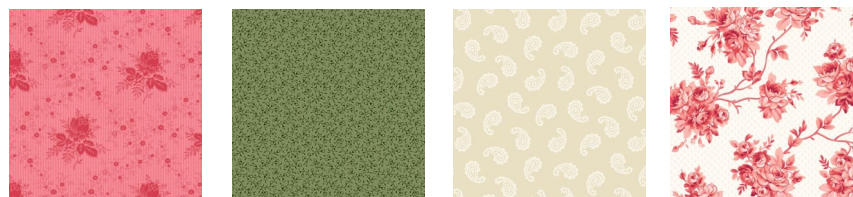


1 A
2 C
7 x 21

1 B
5 x 10

1 D
10 x 10

WEST VIRGINIA BLOCK #44



4 A
13 x 6

4 Ar
13 x 6

1 B
7 x 7

1 C
7 x 7



Corner Triangles
14 x 7



Inner Border
32 x 42



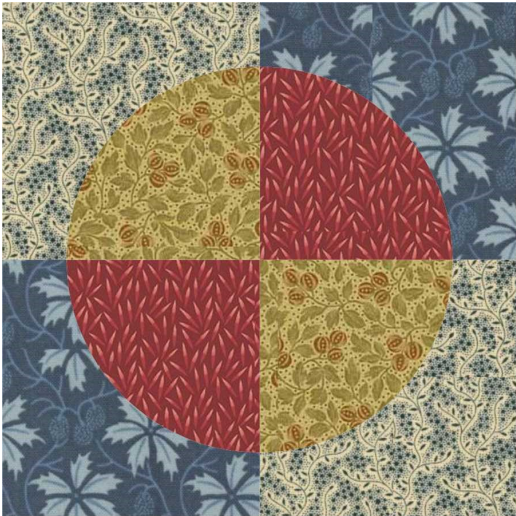
903-760-7397

info@stitchinheaven.com

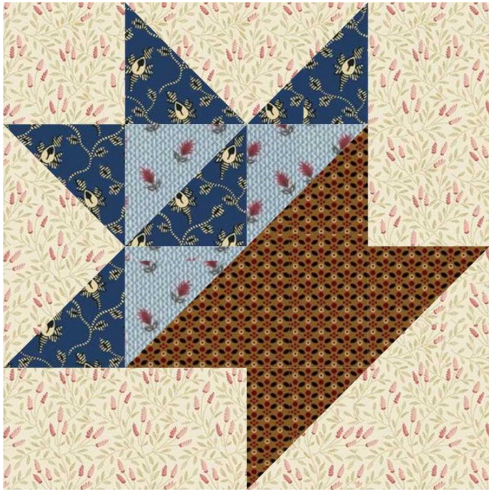
CIVIL WAR SAMPLER

**Month #11
BLOCKS #41-44**

**INDIANA PUZZLE
BLOCK #41**



**GRAPES OF WRATH
BLOCK #42**



**UNION SHIELD
BLOCK #43**



**WEST VIRGINIA
BLOCK #44**



903-638-6915 ext 105
info@stitchinheaven.com