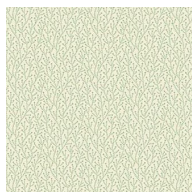


CIVIL WAR SAMPLER

**MONTH #12
BLOCKS 45-48**

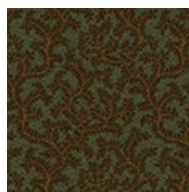
CAROLINA LILY BLOCK #45



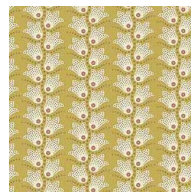
**2 A
1 D
18 x 5**



**1 B
1 C
10 x 7**



**1 D
5 x 5**



**3 E
7 x 7**

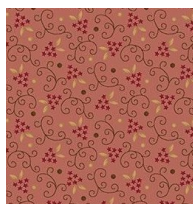


**2 E
7 x 7**

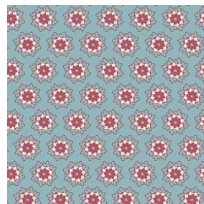


**1 F
6 x 7**

CONFEDERATE ROSE BLOCK #46



**2 A
8 x 5**



**4 B
9 x 10**



**4 C
7 x 21**



**1 D
5 x 5**

Some of your fabrics may be different from the ones shown on this fabric key, but they will be similar in color.

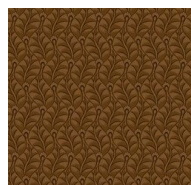
RED, WHITE & BLUE STAR BLOCK #47



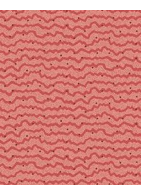
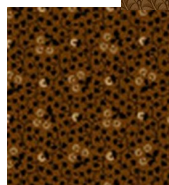
**1 A-1 Ar
1 B-1 Br
1 C
10 x 21**



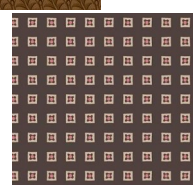
**5 D
12 x 10**



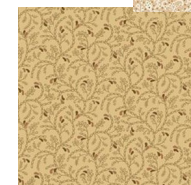
**1 A DARKS
10 x 4**



**1 B
7 x 7**



**1 A LIGHTS
10 x 4**



CIVIL WAR SAMPLER

**MONTH #12
BLOCKS 45-48**

**CAROLINA LILY
BLOCK #45**

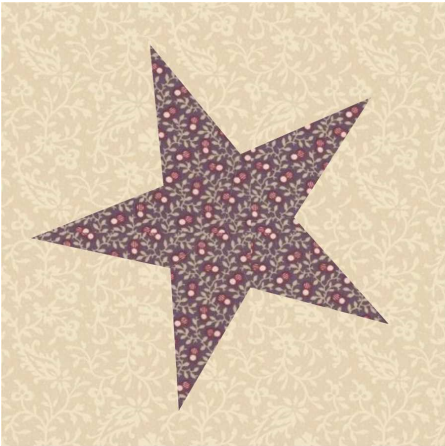


**CONFEDERATE ROSE
BLOCK #46**



Some of your fabrics may be different from the ones here, but they will be similar in color.

**RED, WHITE & BLUE STAR
BLOCK #47**



**STARS & STRIPES
BLOCK #48**



903-638-6915 ext 105
bomhq@stitchinheaven.com