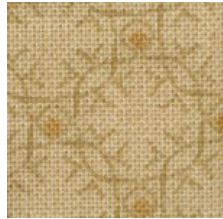


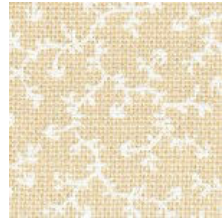
# CLASSIC NUTCRACKERS

Month #2

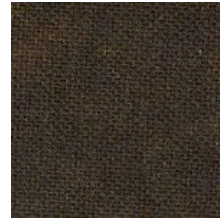
## HERR DROSSELMAYER



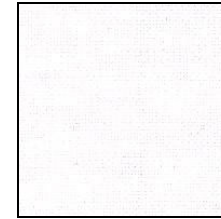
BACKGROUND #1



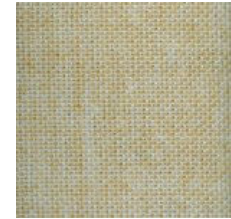
BACKGROUND #2 CIRCLE



BROWN



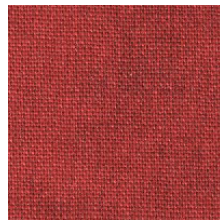
WHITE



TAN



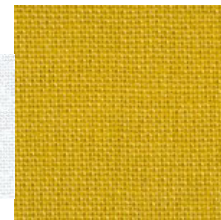
BLACK



RED



GOLD



GREEN

## CHURN DASH - CORN & BEANS



OFF WHITE #1  
BORDER with  
RED



OFF WHITE #2  
BACKGROUND



RED



GREEN



GOLD



\*\*\* A 5" x 10" piece of black is included to do Nutcracker mouths. Make sure to save your scraps of all fabrics until the program is complete!