

# COMING HOME

Month #4

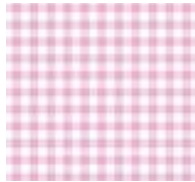
## BORDER 1 HOUSES & ASSEMBLY

HOUSE #3



7 X 7

HOUSE #8



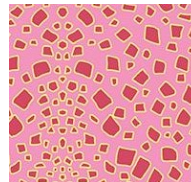
7 X 7

HOUSE #4



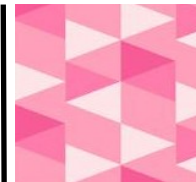
7 X 21

HOUSE #5



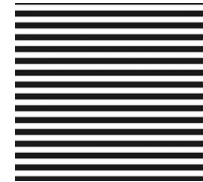
5 X 5

HOUSE #6



9 X 21

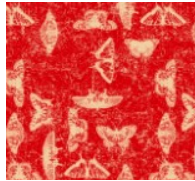
ROOFS 3, 8



5 X 42



5 X 7



5 X 7



8 x 7

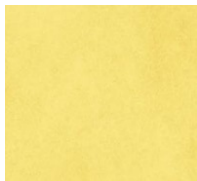


9 X 21

ROOFS 4, 5 & 6



11 X 42



9 X 21



9 X 21



8 x 4

M  
A  
Y  
R  
E  
C  
E  
I  
V  
E  
O  
N  
E



903-760-7397

[info@stitchinheaven.com](mailto:info@stitchinheaven.com)