

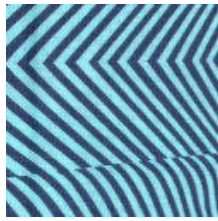
DEAR DAUGHTER

Month #12

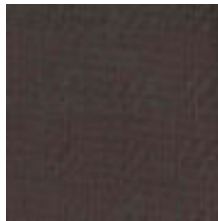
Chapter 12 BLOCKS 41-43 & FINISHING



BLOCK 41



BLOCK 41
FABRIC B



BLOCK 41
FABRIC C



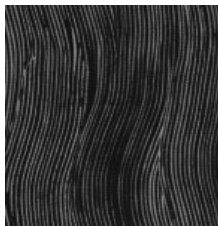
BLOCK 42
FABRIC A & B



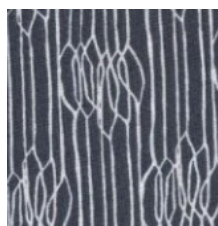
BLOCK 42
FABRIC C & D



BLOCK 43
FABRIC A-D



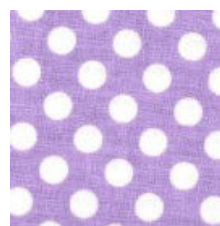
BLOCK 43
FABRIC E & G



BLOCK 43
FABRIC F



BLOCK 43
FABRIC S



BLOCK 43
FABRIC H & I



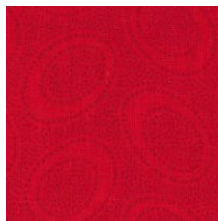
BLOCK 43
FABRIC J



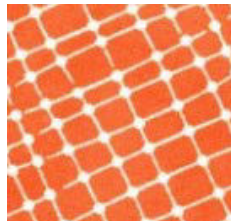
BLOCK 43
FABRIC K



BLOCK 43
FABRIC P



BLOCK 43
FABRIC L & O



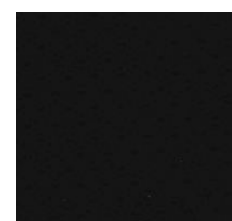
BLOCK 43
FABRIC M



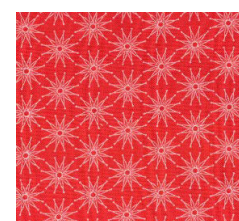
BLOCK 43
FABRIC R



BLOCK 43
FABRIC N



BLOCK 4
FABRIC A & B



BLOCK 4
FABRIC C



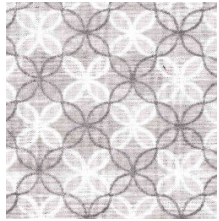
903-638-6915

bomhq@stitchinheaven.com

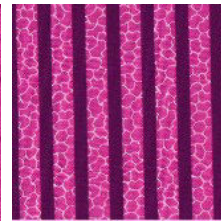
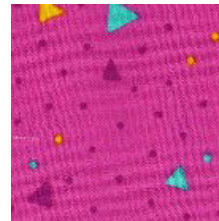
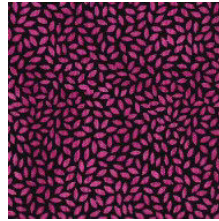
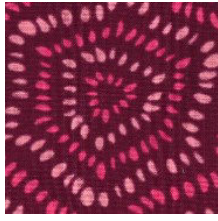
DEAR DAUGHTER

Month #12

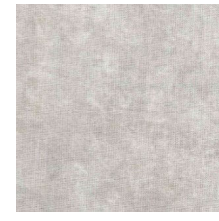
Chapter 12 BLOCKS 41-43 & FINISHING



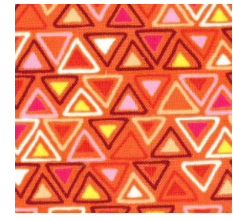
BLOCK 10
FABRIC A & B



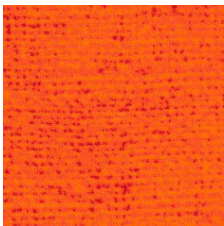
—————BLOCK 10 FABRIC C—————



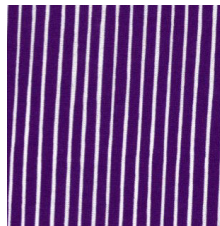
BLOCK 11
LOW VOLUME



BLOCK 11
FABRIC A



BLOCK 11
FABRIC A



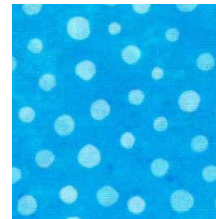
BLOCK 11
FABRIC C



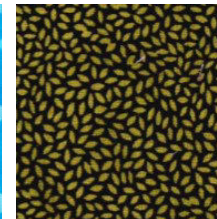
BLOCK 17
FABRIC A



BLOCK 17
FABRIC B



BLOCK 17
FABRIC B



BLOCK 17
FABRIC B



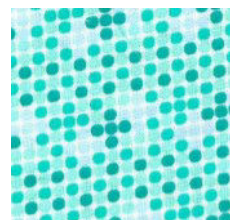
BLOCK 17
FABRIC B



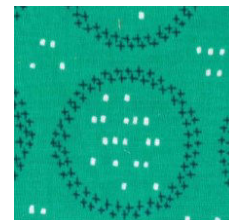
BLOCK 20
FABRIC B



BLOCK 20
FABRIC C



BLOCK 20
FABRIC A



BLOCK 20
FABRIC D



903-638-6915

bomhq@stitchinheaven.com

DEAR DAUGHTER

Month #12

Chapter 12 BLOCKS 41-43 & FINISHING



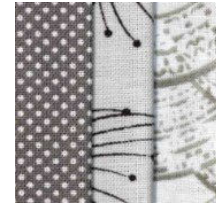
BLOCK 22
FABRIC A & B



BLOCK 22
FABRIC A & B



BLOCK 22
FABRIC A & B



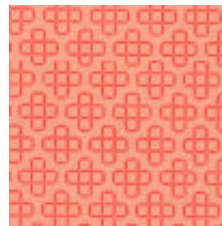
BLOCK 26
FABRIC A



BLOCK 26
FABRIC B



BLOCK 36
FABRIC A-D



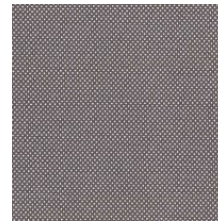
BLOCK 36
FABRIC E



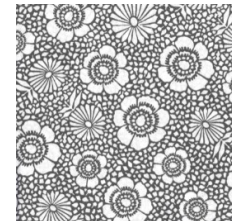
BLOCK 36
FABRIC F



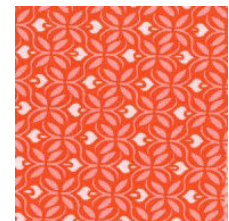
BLOCK 36
FABRIC G



BINDING



BORDER
FABRIC A



FABRIC D
STEMS



BORDER
FABRIC B



BORDER
FABRIC E



BORDER
FABRIC C



903-638-6915

bomhq@stitchinheaven.com