

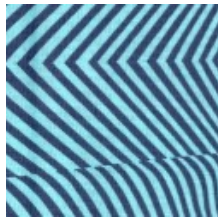
DEAR DAUGHTER

Month #12

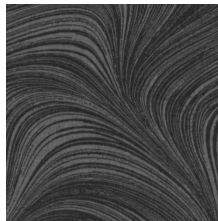
Chapter 12 BLOCKS 41-43 & FINISHING



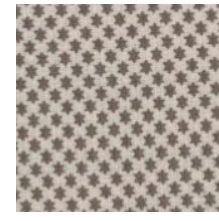
BLOCK 41



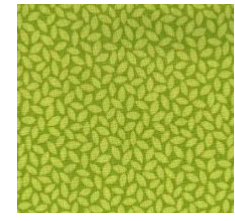
BLOCK 41
FABRIC B



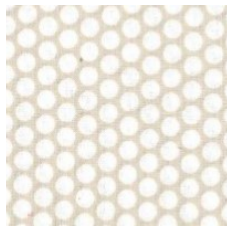
BLOCK 41
FABRIC C



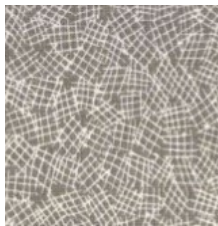
BLOCK 42
FABRIC A & B



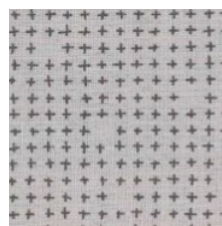
BLOCK 42
FABRIC C & D



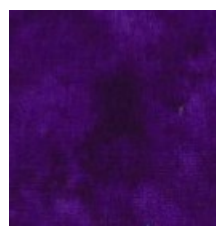
BLOCK 43
FABRIC A-D



BLOCK 43
FABRIC E



BLOCK 43
FABRIC F & G



BLOCK 43
FABRIC S



BLOCK 43
FABRIC H & I



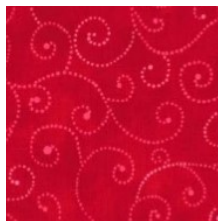
BLOCK 43
FABRIC J



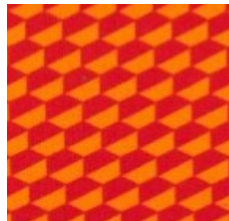
BLOCK 43
FABRIC K



BLOCK 43
FABRIC P



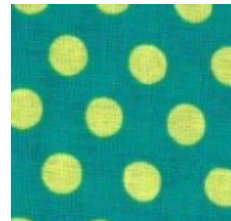
BLOCK 43
FABRIC L & O



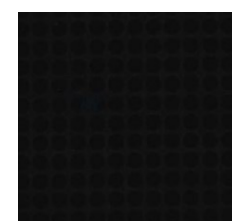
BLOCK 43
FABRIC M



BLOCK 43
FABRIC R



BLOCK 43
FABRIC N



BLOCK 4
FABRIC A & B



BLOCK 4
FABRIC C



903-638-6915

bomhq@stitchinheaven.com

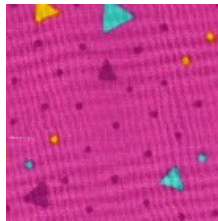
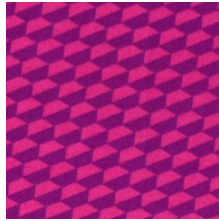
DEAR DAUGHTER

Month #12

Chapter 12 BLOCKS 41-43 & FINISHING



BLOCK 10
FABRIC A & B



—————BLOCK 10 FABRIC C—————



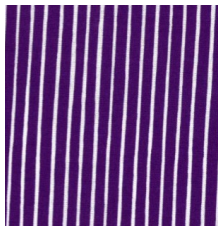
BLOCK 11
LOW VOLUME



BLOCK 11
FABRIC A



BLOCK 11
FABRIC A



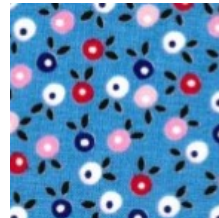
BLOCK 11
FABRIC C



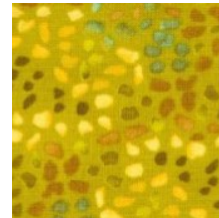
BLOCK 16
FABRIC A



BLOCK 16
FABRIC B



BLOCK 16
FABRIC B



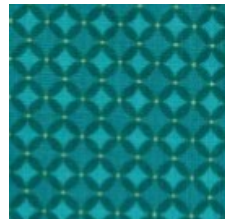
BLOCK 16
FABRIC B



BLOCK 16
FABRIC B



BLOCK 20
FABRIC B & C



BLOCK 20
FABRIC A



BLOCK 20
FABRIC D



903-638-6915

bomhq@stitchinheaven.com

DEAR DAUGHTER

Month #12

Chapter 12 BLOCKS 41-43 & FINISHING



BLOCK 22
FABRIC A & B



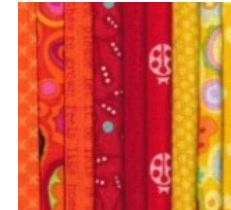
BLOCK 22
FABRIC A & B



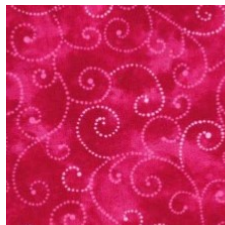
BLOCK 22
FABRIC A & B



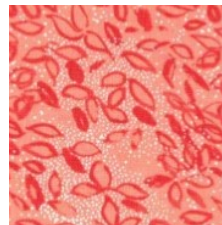
BLOCK 26
FABRIC A



BLOCK 26
FABRIC B



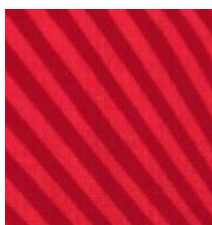
BLOCK 36
FABRIC A-D



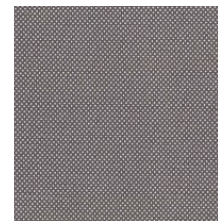
BLOCK 36
FABRIC E



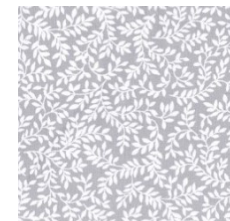
BLOCK 36
FABRIC F



BLOCK 36
FABRIC G



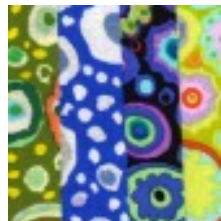
BINDING



BORDER**
FABRIC A



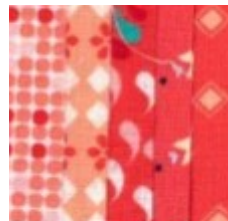
STEMS**
FABRIC D



BORDER
FABRIC B



BORDER
FABRIC E



BORDER
FABRIC C

**THE FABRICS IN YOUR PACKAGE THAT ARE TO BE USED FOR THE BORDER AND STEMS MAY BE DIFFERENT THAN THE ONES PICTURED HERE



903-638-6915

bomhq@stitchinheaven.com