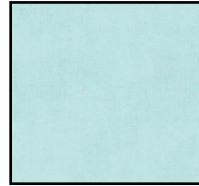


Bee Happy

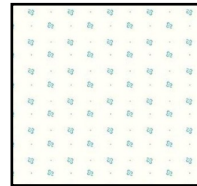
Month #12

Pincushion, 3 Trees and Coral Flowers Blocks

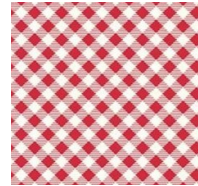
Pincushion Block



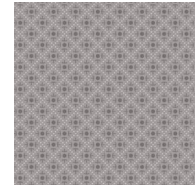
Jar
7 x 5



Background
8 x 6

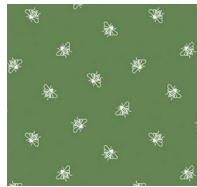


Pincushion
5 x 5

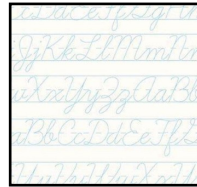


Lid
2 x 10.5

3 Trees Block



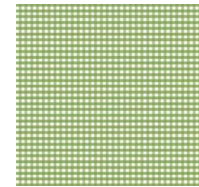
Center Tree Top
7 x 7



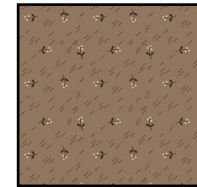
Background
12 x 8



Side Tree Top
5 x 5

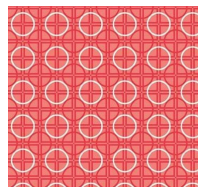


Side Tree Top
5 x 5
12 x 5



Tree Trunks &
Branches

Coral Flowers Block



Center Flower
7 x 7



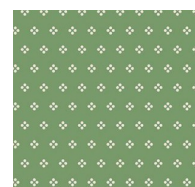
Center
4 x 4



Side Flowers
5 x 21



Side Flower
Centers
3 x 10.5



Leaves
8 x 10.5



Stems
12 x 3



Background
16 x 21



903-760-7397

info@stitchinheaven.com