

FOUR STAR GENERALS

Month # 3

Capital T Variation

BLOCK #1



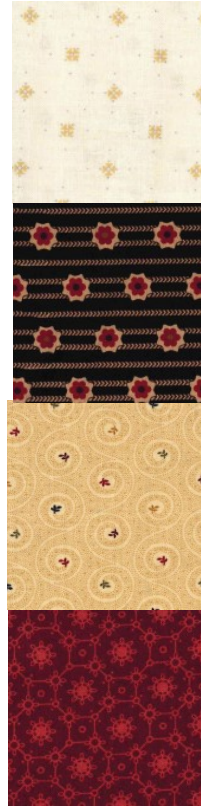
Light

Main

Accent #1

Accent #2

BLOCK #2



Light

Main

Accent #1

Accent #2

BLOCK #3



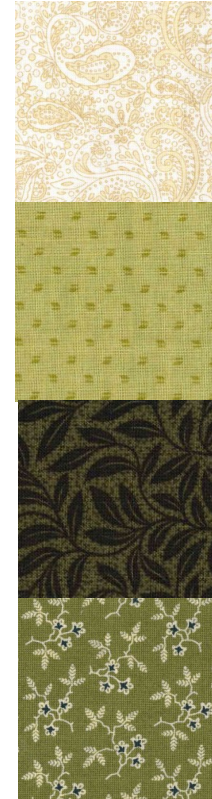
Light

Main

Accent #1

Accent #2

BLOCK #4



Light

Main

Accent #1

Accent #2

EXTRA FABRIC HAS BEEN SENT FOR MAKING YOUR PIECED BORDER HALF STARS. SAVE ALL FABRIC SCRAPS FOR USE ON THE BORDER. YOU CAN MAKE SOME AS YOU GO.



903-760-7397

info@stitchinheaven.com