

GENTRY'S MILL TUTORIAL

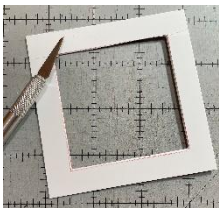
Month #1

- ♥ First, cut all of your border fabrics and put them aside for the end of the program.
- ♥ Follow the cutting chart exactly as shown on page 2 and 3 to make (4) of Block #1. You have a picture of the fabric on the cutting chart so there should not be any confusion.
- ♥ I don't mention measurements in this tutorial because someone could make the quilt without the pattern. I can't give away the farm!
- ♥ Check out my FREE videos on The Quilt Show.com on how to make Flying Geese here: [Easy Patchwork Math with Lynn Wilder - Lesson 05 - Flying Geese and Double Flying Geese](#)



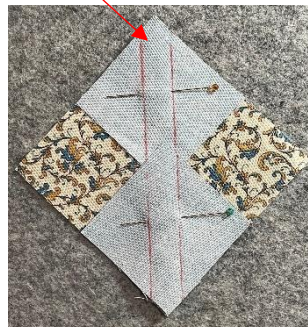
- ♥ I **ALWAYS** starch my fabrics first using heavy-duty spray starch. Make sure you press **AFTER** the fabric is thoroughly dry otherwise you may distort the fabric. If you haven't adopted the starch habit yet, give it a try. The starch makes the fabric much easier to work with. Once the seams are pressed, they stay pressed. There is also less raveling.

I starch my fabrics over the bathtub and place them on an old-fashioned dryer. Any wooden dryer will work well, and the fabrics will dry very quickly if the dryer is placed outside.



- ♥ I made a template out of cardboard so that I can cut my center accurately. You will be using this template for quite a few of the blocks. Draw a square on the cardboard the exact measurement for 'N' on page two. I used an Xacto knife to cut through the cardboard.

- ♥ FLYING GEESE use pieces 'L' & 'M'
- ♥ I used an Omnigrd 1/4" ruler and drew a line on both sides of the ruler. Pin, then stitch on the marked line. If your flying geese tend to run too small, stitch toward the inside of the line.



✂ Cut between the stitched lines.



Press toward the blue squares.



Place another square on the top, right sides together. Mark it then stitch on the lines.



✂ Cut between the stitched lines and press toward the blue square.



Use a Bloc-Loc ruler and trim to the measurement on page 17.



The flying geese will be placed around the center of the block.

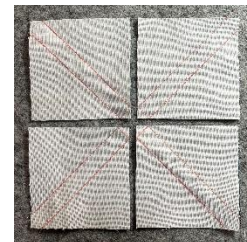
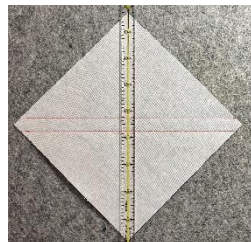


♥ HALF SQUARE TRIANGLES (HST) use pieces 'B' & 'C' and 'I' and 'J'. See the 'trim to' sizes on page 18 of the pattern.

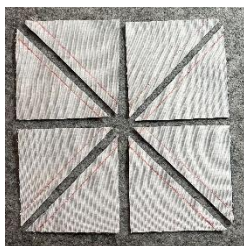
♥ You can watch my FREE videos on The Quilt Show.com to find out how I make HST here: [Easy Patchwork Math with Lynn Wilder - Lesson 02 - Half-Square Triangles](#)

♥ I will show you the large size using pieces 'B' & 'C' in this tutorial.

Begin with the light and dark squares. Mark, stitch on the lines. Cut vertically & horizontally.

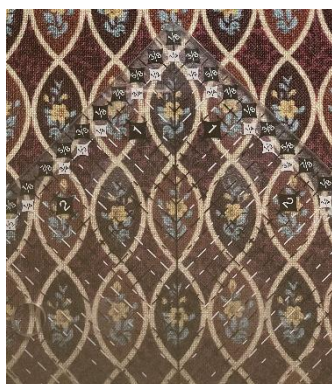


The last cut is diagonal. Press toward the darker fabric. Trim to the correct size for 'B' and 'C' on page 18 of the pattern.



♥ Now you will make this section of the block.

✂ Cut piece 'D' on the bias. It is important that you starched your fabric first.



✂ Cut piece 'K'



Then cut each one in half.



✂ Cut piece 'F'.



Cut each one diagonally from corner to corner.



Take note of the orientation of the squares around the block.

✂ Cut piece 'E'.

Cut each square diagonally from corner to corner.



Lay the pieces out.



Stitch 'E' to 'F'. Press in the direction of the arrows. Stitch 'F' to 'D'.



Cut the corners off at 90 degrees then stitch. Press toward the triangle.



Cut the corners off at 45 degrees.

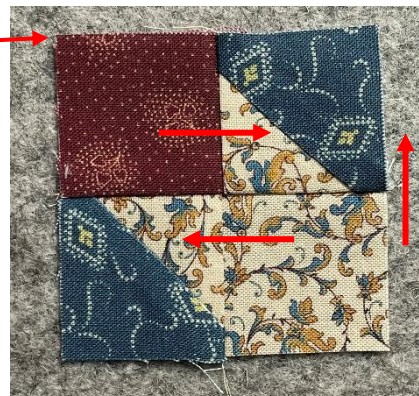
Stitch 'E' & 'F' to the rest of the unit. **Trim to the size printed at the bottom of page 19.**



The two side sections will be oriented like this.



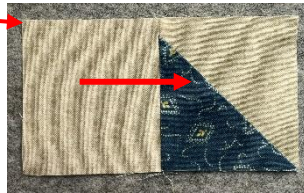
- ♥ Make the smaller HST using pieces 'I' & 'J'.
- ♥ Place all the components and squares on the block layout sheet. Stitch the components together in sections. Press in the direction of the arrows.



- ♥ Stitch the HST to the other section. Press in the direction of the arrow.



- ♥ This section is next. Press in the direction of the arrow. Stitch the two sections together.



- ♥ Stitch this section together and press in the direction of the arrow.



Press in the direction of the arrows.





I ended up pressing the seams open. This was my preference..



Trim the block to the size printed on page 20.