

Grateful

Month 8

Some of your fabrics may differ from those shown here, but they will be similar.

16" Border Units & Border Corner Units

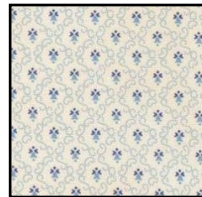
16" Border Units



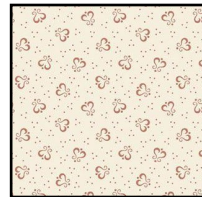
Background for
16" Border Units
6 x 42
Use to cut
3 - 1 1/2" x 42"
Set aside for
strip piecing



Background for
16" Border Units
6 x 42
Use to cut
3 - 1 1/2" x 42"
Set aside for
strip piecing



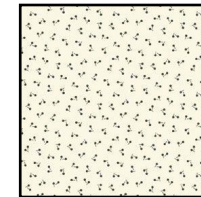
Background for
16" Border Units
6 x 42
Use to cut
3 - 1 1/2" x 42"
Set aside for
strip piecing



Background for
16" Border Units
8 x 42
Use to cut strips
2 1/2" x 42 and
4 1/2" x 42 for
Strip piecing and
1 1/2" x 2 1/2"
2 1/2" x 2 1/2"
2 1/2" x 4 1/2"
4 1/2" x 10 1/2"
3 1/2" x 4 1/2"



Background for
16" Border Units
8 x 42
Use to cut strips
2 1/2" x 42 and
4 1/2" x 42 for
Strip piecing and
1 1/2" x 2 1/2"
2 1/2" x 2 1/2"
2 1/2" x 4 1/2"
4 1/2" x 10 1/2"
3 1/2" x 4 1/2"



Background for
16" Border Units
8 x 42
Use to cut strips
2 1/2" x 42 and
4 1/2" x 42 for
Strip piecing and
1 1/2" x 2 1/2"
2 1/2" x 2 1/2"
2 1/2" x 4 1/2"
4 1/2" x 10 1/2"
3 1/2" x 4 1/2"



Background for
16" Border Units
8 x 42
Use to cut strips
2 1/2" x 42 and
4 1/2" x 42 for
Strip piecing and
1 1/2" x 2 1/2"
2 1/2" x 2 1/2"
2 1/2" x 4 1/2"
4 1/2" x 10 1/2"
3 1/2" x 4 1/2"



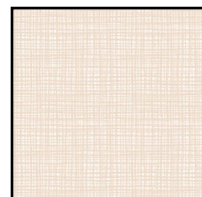
Background for
16" Border Units
8 x 42
Use to cut strips
2 1/2" x 42 and
4 1/2" x 42 for
Strip piecing and
1 1/2" x 2 1/2"
2 1/2" x 2 1/2"
2 1/2" x 4 1/2"
4 1/2" x 10 1/2"
3 1/2" x 4 1/2"



Background for
16" Border Units
8 x 42
Use to cut strips
2 1/2" x 42 and
4 1/2" x 42 for
Strip piecing and
1 1/2" x 2 1/2"
2 1/2" x 2 1/2"
2 1/2" x 4 1/2"
4 1/2" x 10 1/2"
3 1/2" x 4 1/2"



Background for
16" Border Units
8 x 42
Use to cut strips
2 1/2" x 42 and
4 1/2" x 42 for
Strip piecing and
1 1/2" x 2 1/2"
2 1/2" x 2 1/2"
2 1/2" x 4 1/2"
4 1/2" x 10 1/2"
3 1/2" x 4 1/2"



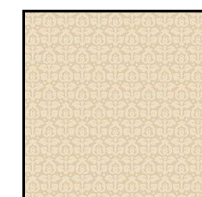
Background for
16" Border Units
8 x 42
Use to cut strips
2 1/2" x 42 and
4 1/2" x 42 for
Strip piecing and
1 1/2" x 2 1/2"
2 1/2" x 2 1/2"
2 1/2" x 4 1/2"
4 1/2" x 10 1/2"
3 1/2" x 4 1/2"



Background for
16" Border Units
8 x 42
Use to cut strips
2 1/2" x 42 and
4 1/2" x 42 for
Strip piecing and
1 1/2" x 2 1/2"
2 1/2" x 2 1/2"
2 1/2" x 4 1/2"
4 1/2" x 10 1/2"
3 1/2" x 4 1/2"



Background for
16" Border Units
8 x 42
Use to cut strips
2 1/2" x 42 and
4 1/2" x 42 for
Strip piecing and
1 1/2" x 2 1/2"
2 1/2" x 2 1/2"
2 1/2" x 4 1/2"
4 1/2" x 10 1/2"
3 1/2" x 4 1/2"



Background for
16" Border Units
8 x 42
Use to cut strips
2 1/2" x 42 and
4 1/2" x 42 for
Strip piecing and
1 1/2" x 2 1/2"
2 1/2" x 2 1/2"
2 1/2" x 4 1/2"
4 1/2" x 10 1/2"
3 1/2" x 4 1/2"



Background for
16" Border Units
8 x 42
Use to cut-
2 - 3 1/2" x 42"
Set aside for
strip piecing



Grateful

Month 8

16" Border Units



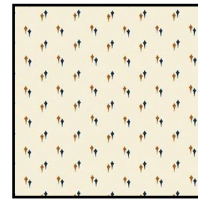
Dark
12 x 42
Use to cut
7 - 1 1/2" x 42"
Set aside for
strip piecing



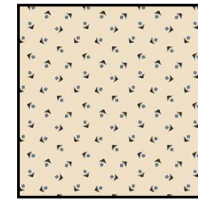
Dark
12 x 42
Use to cut
7 - 1 1/2" x 42"
Set aside for
strip piecing

Some of your fabrics may be different from the ones shown here but they will be similar.

Border Corner Units



Background
3 x 42
Use to cut
1 - 1 1/2" x 42 for
2 - 1 1/2" x 14"
And Set aside for
strip piecing



Background
8 x 42
Use to cut-
2 - 3 1/2" x 42" for
4 - 3 1/2" x 3 1/2"
8 - 3 1/2" x 4 1/2"



Background
4 x 42
Use to cut-
1 - 2 1/2" x 42" for
12 - 2 1/2" x 2 1/2"



Dark
5 x 42
Use to cut-
1 - 3 1/2" x 42 for
1 - 3 1/2" x 14"
1 - 2 1/2" x 14"
To set aside for
Strip piecing and
4 - 1 1/2" x 1 1/2"

