

GYPSY WIFE

Month #1

Colour Wheel and Pershing

Colour Wheel
Will be used in Section 3



Background

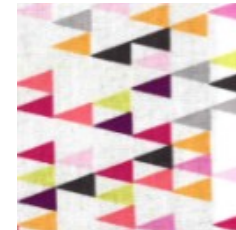


Center

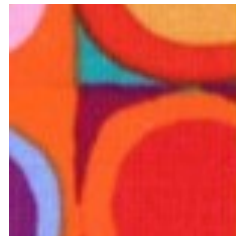
Pershing
Will be used in Section 2



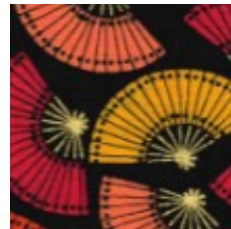
Fabric A



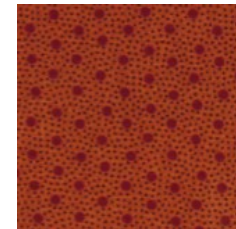
Fabric B



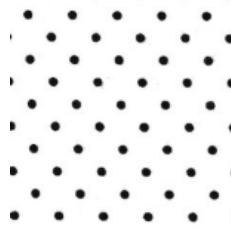
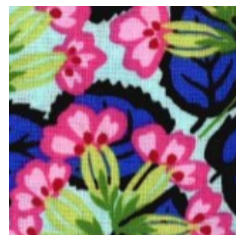
Feature Fabrics



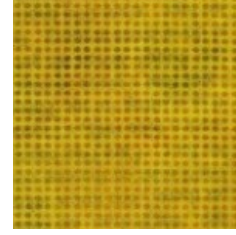
Fabric C



Fabric D



Fabric E



Fabric F



903-638-6915

bomhq@stitchinheaven.com