

# GYPSY WIFE

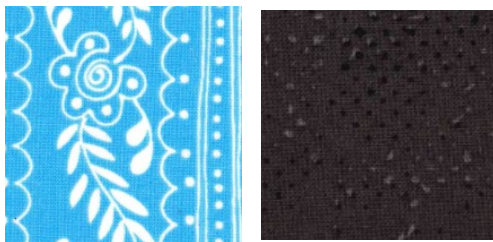
Month #11

## SQUARE IN A SQUARE FILLER BLOCKS

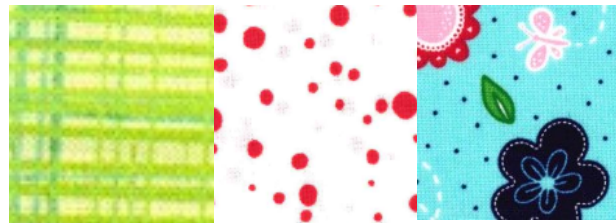
SQUARE IN A SQUARE  
WITH PINWHEEL CENTER  
USE A 2 1/2" PINWHEEL  
(5" FINISHED)



SQUARE IN A SQUARE  
WITH PINWHEEL CENTER  
USE A 2 1/2" PINWHEEL  
(5 1/2" FINISHED)



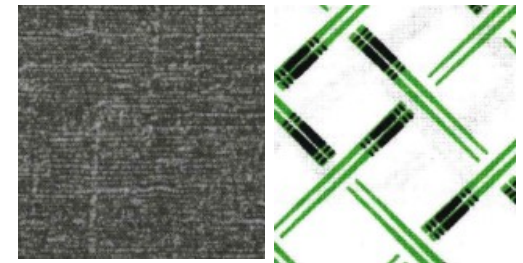
BORDERED SQUARE IN A SQUARE  
USE 3" SQUARE IN A SQUARE BLOCK  
ADD BORDER (MAKE 3)  
(5" FINISHED)



BORDERED SQUARE IN A SQUARE  
USE A 4" SQUARE IN A SQUARE BLOCK  
ADD BORDER (MAKE 1)  
6" FINISHED



BORDERED SQUARE IN A SQUARE  
USE A 3" SQUARE IN A SQUARE BLOCK  
ADD 2 ROUNDS (MAKE 1)  
(7" FINISHED)



903-638-6915

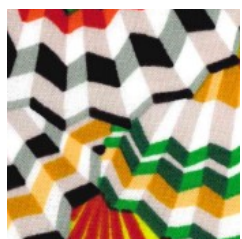
[bomhq@stitchinheaven.com](mailto:bomhq@stitchinheaven.com)

# GYPSY WIFE

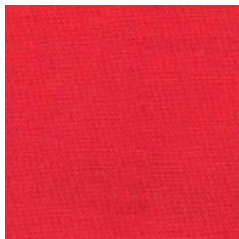
Month #11

## SQUARE IN A SQUARE FILLER BLOCKS

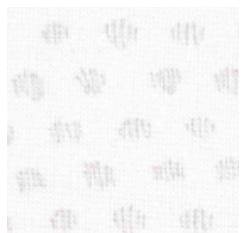
SQUARE IN A SQUARE  
WITH COURTHOUSE STEPS  
10" FINISHED  
(MAKE 1)



CENTER SQUARE



ROUND 1



2 SQUARES



ROUND 2

SQUARE IN A SQUARE  
WITH COURTHOUSE STEPS  
10 1/2" FINISHED  
(MAKE 1)



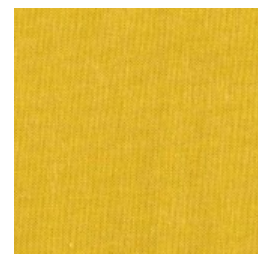
CENTER SQUARE



ROUND 1



2 SQUARES

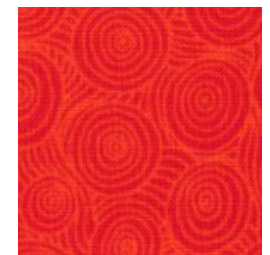


ROUND 2

SQUARE IN A SQUARE  
WITH COURTHOUSE STEPS  
7" FINISHED  
(MAKE 1)



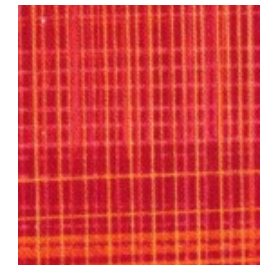
CENTER SQUARE



ROUND 1



2 SQUARES



ROUND 2



903-638-6915

[bomhq@stitchinheaven.com](mailto:bomhq@stitchinheaven.com)

# GYPSY WIFE

Month #11

## SQUARE IN A SQUARE FILLER BLOCKS

SQUARE IN A SQUARE  
WITH COURTHOUSE STEPS  
7" FINISHED  
(MAKE 1)



CENTER SQUARE



ROUND 1

SQUARE IN A SQUARE  
WITH COURTHOUSE STEPS  
5 1/2" FINISHED  
(MAKE 1)

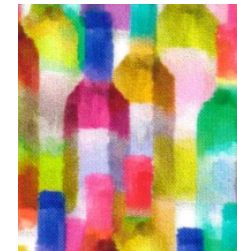


CENTER SQUARE



ROUND 1

SQUARE IN A SQUARE  
WITH COURTHOUSE STEPS  
4" FINISHED  
(MAKE 1)



CENTER SQUARE



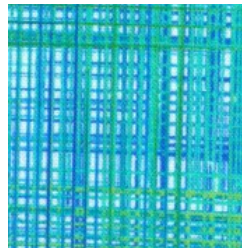
ROUND 1



2 SQUARES



ROUND 2



2 SQUARES



2 SQUARES

SQUARE IN A SQUARE IN A SQUARE  
USE A 3" SQUARE IN A SQUARE  
ADD TRIANGLES (4" FINISHED)



903-638-  
6915