

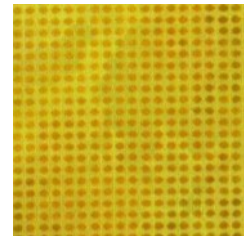
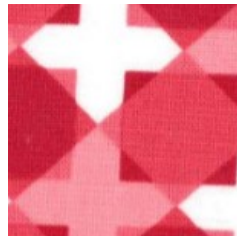
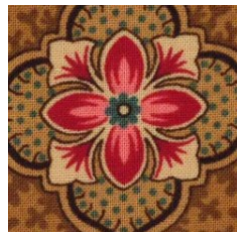
# GYPSY WIFE

Month #4

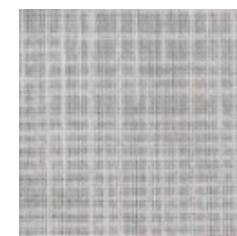
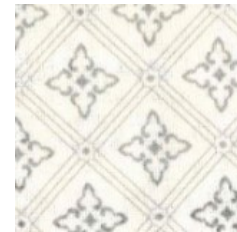
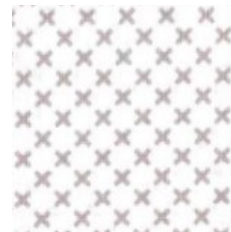
## INDIAN HATCHET AND PUSS IN THE CORNER (MAKE 2)

INDIAN HATCHET  
WILL BE USED IN SECTION 6

FEATURE FABRICS  
(FABRICS FF, GG, HH, II)



CORNER FABRICS  
(FABRICS JJ, KK, LL, MM)



903-638-6915

[bomhq@stitchinheaven.com](mailto:bomhq@stitchinheaven.com)

# GYPSY WIFE

Month #4

## PUSS IN THE CORNER (MAKE 2)

PUSS IN THE CORNER  
WILL BE USED IN SECTION 1



FABRIC NN  
(CENTER)



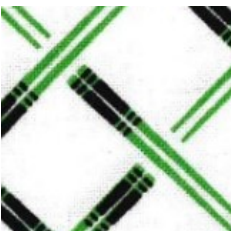
FABRIC OO



FABRIC PP



FABRIC QQ



I INCLUDED THIS FABRIC FOR  
THE QQ 1 1/2 " SQUARES IF YOU  
WOULD LIKE TO MAKE IT  
"SCAPPY" LIKE JEN'S

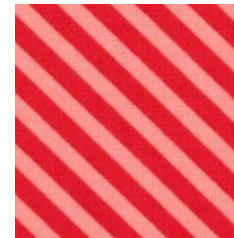
PUSS IN THE CORNER  
WITH BORDER  
WILL BE USED IN SECTION 10



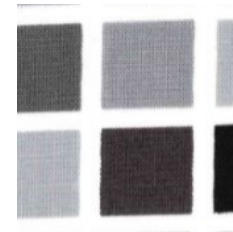
FABRIC NN  
(CENTER)



FABRIC OO



FABRIC PP



FABRIC QQ



BORDER FABRIC

