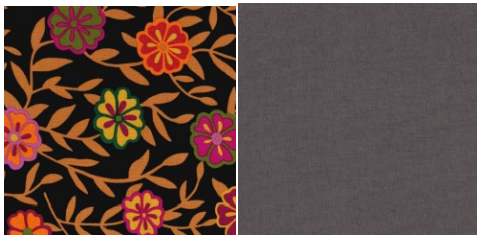


GYPSY WIFE

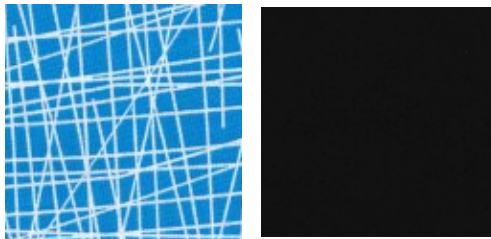
Month #11

SQUARE IN A SQUARE FILLER BLOCKS

SQUARE IN A SQUARE
WITH PINWHEEL CENTER
USE A 2 1/2" PINWHEEL
(5" FINISHED)



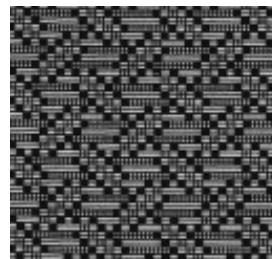
SQUARE IN A SQUARE
WITH PINWHEEL CENTER
USE A 2 1/2" PINWHEEL
(5 1/2" FINISHED)



BORDERED SQUARE IN A SQUARE
USE 3" SQUARE IN A SQUARE BLOCK
ADD BORDER (MAKE 3)
(5" FINISHED)



BORDERED SQUARE IN A SQUARE
USE A 4" SQUARE IN A SQUARE BLOCK
ADD BORDER (MAKE 1)
6" FINISHED



BORDERED SQUARE IN A SQUARE
USE A 3" SQUARE IN A SQUARE BLOCK
ADD 2 ROUNDS (MAKE 1)
(7" FINISHED)



903-760-7397
info@stitchinheaven.com

GYPSY WIFE

Month #11

SQUARE IN A SQUARE FILLER BLOCKS

SQUARE IN A SQUARE
WITH COURTHOUSE STEPS
10" FINISHED
(MAKE 1)



CENTER SQUARE



ROUND 1



2 SQUARES



ROUND 2

SQUARE IN A SQUARE
WITH COURTHOUSE STEPS
10 1/2" FINISHED
(MAKE 1)



CENTER SQUARE



ROUND 1



2 SQUARES



ROUND 2

SQUARE IN A SQUARE
WITH COURTHOUSE STEPS
7" FINISHED
(MAKE 1)



CENTER SQUARE



ROUND 1



2 SQUARES



ROUND 2



GYPSY WIFE

Month #11

SQUARE IN A SQUARE FILLER BLOCKS

SQUARE IN A SQUARE
WITH COURTHOUSE STEPS
7" FINISHED
(MAKE 1)



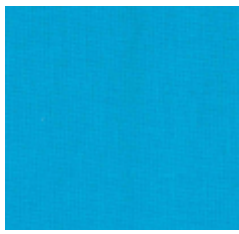
CENTER SQUARE



ROUND 1

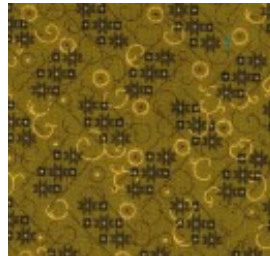


2 SQUARES



ROUND 2

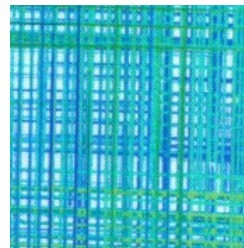
SQUARE IN A SQUARE
WITH COURTHOUSE STEPS
5 1/2" FINISHED
(MAKE 1)



CENTER SQUARE



ROUND 1



2 SQUARES

SQUARE IN A SQUARE
WITH COURTHOUSE STEPS
4" FINISHED
(MAKE 1)



CENTER SQUARE

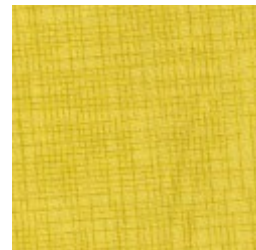


ROUND 1



2 SQUARES

SQUARE IN A SQUARE IN A SQUARE
USE A 3" SQUARE IN A SQUARE
ADD TRIANGLES (4" FINISHED)



903-760-7397
info@stitchinheaven.com