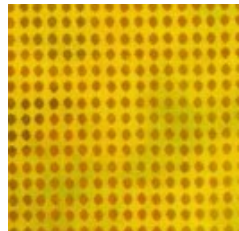


# GYPSY WIFE

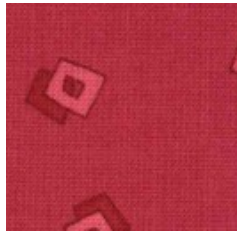
Month #5

## NURSES CROSS

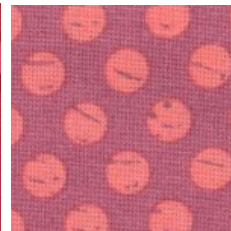
WILL BE USED IN SECTION #6



FABRIC RR



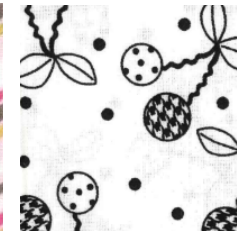
FABRIC SS



FABRIC TT



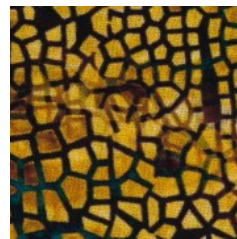
FABRIC UU



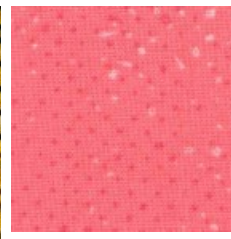
FABRIC VV



FABRIC WW



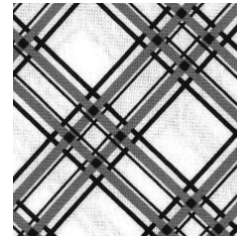
FABRIC XX



FABRIC YY



FABRIC ZZ



FABRIC AA



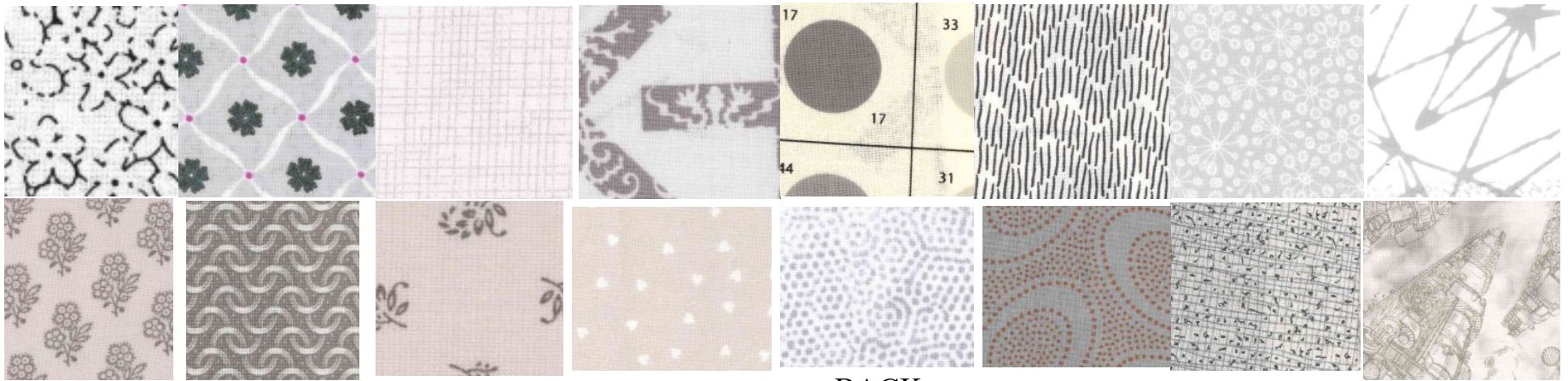
903-760-7397  
[info@stitchinheaven.com](mailto:info@stitchinheaven.com)

# GYPSY WIFE

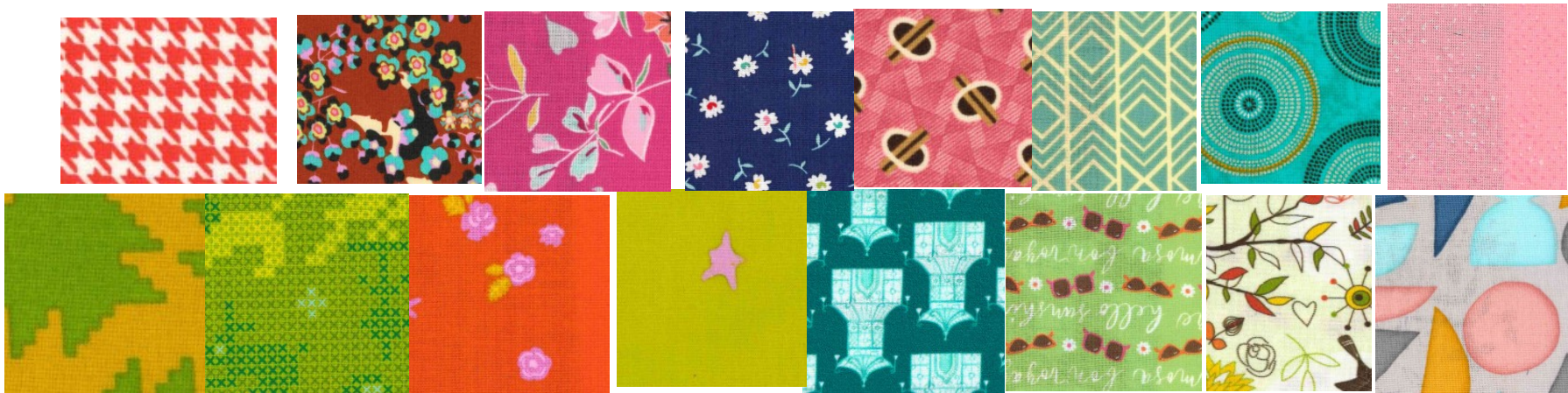
Month #5

## HALF SQUARE TRIANGLE BLOCKS (MAKE 2)

WILL BE USED IN SECTION #4 AND 5



BACK-



FOCUS FABRICS