

# GYPSY WIFE

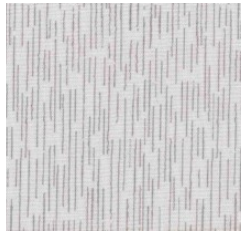
Month #8

## COURTHOUSE STEPS FILLER BLOCKS

8" FINISHED WILL BE USED  
IN SECTION 4



4 X 4



10 X 5



13 X 5



17 X 5

7" FINISHED WILL BE USED  
IN SECTION 2



5 X 5

11 X 5



15 X 5



903-760-7397

[info@stitchinheaven.com](mailto:info@stitchinheaven.com)

# GYPSY WIFE

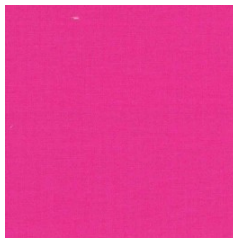
Month #8

## FILLER BLOCKS-COURTHOUSE STEPS

5" FINISHED WILL BE  
USED IN SECTION 6



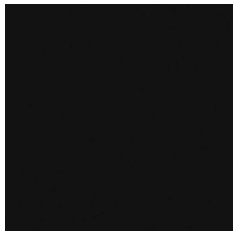
3 X 3  
(CENTER)



6 X 4

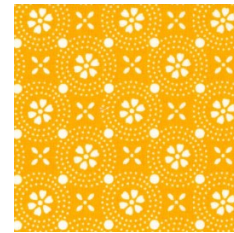


9 X 5



12 X 4

4" FINISHED WILL BE USED IN  
SECTION 6  
( MAKE 2 )



4 X 4  
(CENTER)



4 X 4  
(CENTER)



9 X 5



9 X 5

