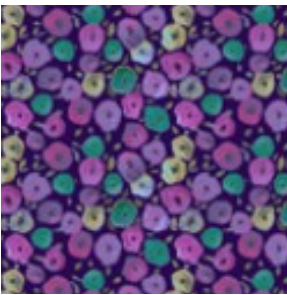


HARMONY
MONTH 4 - CHORUS
MAKE 4 BLOCKS

YOUR BLOCKS FINISH AT 9", WHICH IS THE SIZE WHEN THEY ARE SET IN THE QUILT.
SQUARE UP YOUR BLOCKS TO 9.5" AND SET ASIDE FOR UNTIL MONTH 8.



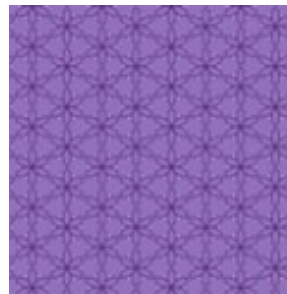
PURPLE POP
FLORAL
MB0598-1036



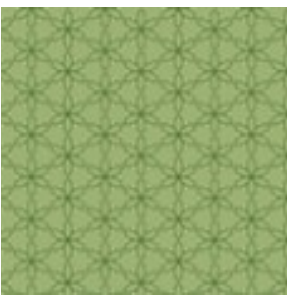
PURPLE STRIATED
MB0599-1037



PURPLE FLYING
MB0600-1037



PURPLE ON POINT
MB0601-1035



OLIVE ON POINT
MB0601-1014



GREEN SHIMMER
MB9855-1020



903-760-7397

bomhq@stitchinheaven.com