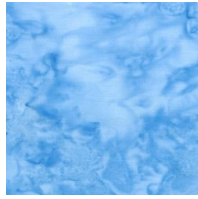


Into The Woods

Month #1 Block 1 Songbirds



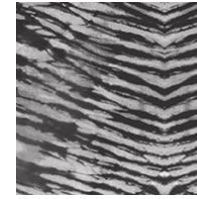
Brown Bark
for tree #9
13 x 13



Blue Batik for
Blue Jay
#35, 36, 39,
48
3 x 5



Red Stripe for
Cardinal #20,
23
3 x 3



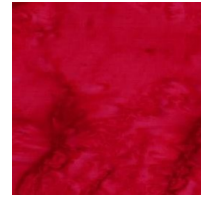
Black & White
feather for
Cardinal &
Oriole #29,
30
2 x 2



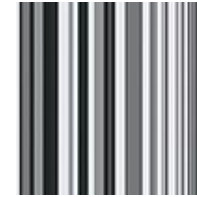
Med Green for
leaves #1, 3,
5, 12, 17
6 x 6



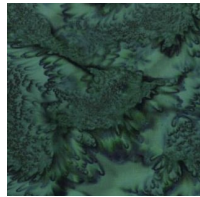
Lt Blue Batik
for Blue Jay
#38, 40, 45
3 x 3



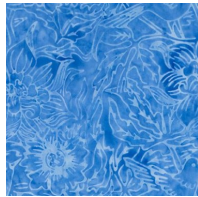
Red Batik for
Cardinal #22
3 x 3



White & Black
stripe for
Goldfinch #54
2 x 2



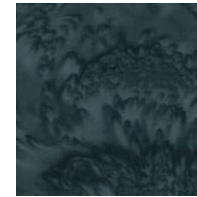
Dk Green for
leaves #7, 13,
15, 18
6 x 6



Med Blue Ba-
tik for Blue
Jay #43, 47
3 x 3



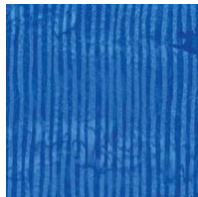
Med Yellow
Batik for Gold-
finch #50
3 x 3



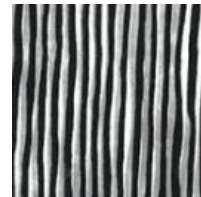
Gray Black
Batik for Ori-
ole #32
2 x 2



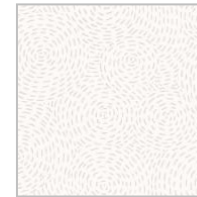
Med Green for
leaves #4, 6,
11, 8
5 x 5



Dk Blue stripe
for Blue Jay
#41, 44, 46
3 x 3



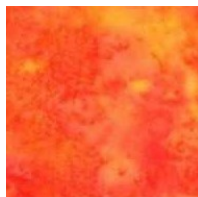
Black & White
stripe for
Goldfinch &
Oriole #28,
52, 56
3 x 3



White for
Goldfinch #55
2 x 2(1 x 1)



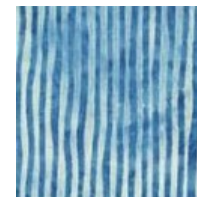
Dk Green #2,
10, 14, 16
5 x 5



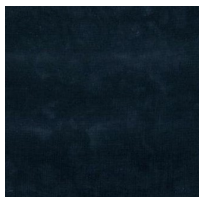
Orange Batik
for Oriole #26
3 x 3



Dk Orange
Batik for Ori-
ole #25, 31
2 x 2



Lt Blue stripe
for Blue Jay
#42
2 x 3(1 x 3)



Black Lt. Batik
for birds #21,
27, 34, 51,
53, 57
4 x 4



Yellow for Gold-
finch #58
2 x 2
(Not on Pattern)



Red stripe for
Cardinal #19
2 x 3



903-760-7397

info@stitchinheaven.com