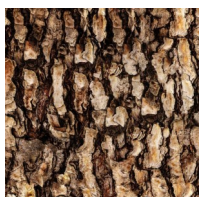


Into The Woods

Month #4

Block 4

Red-Bellied Woodpecker



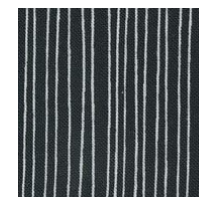
Brown Bark
for tree #11
13 x 13



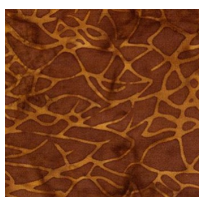
Med Green for
leaves #7, 24,
42
5 x 5



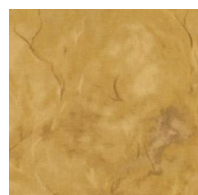
Blacklight for
inside tree #8
4 x 4



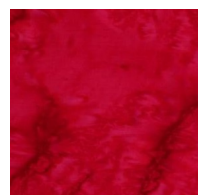
Black & White
tiny strip for
woodpeckers
#30, 47
2 x 2



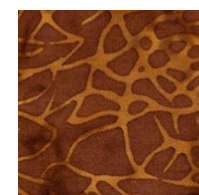
Tan Stripe for
acorns #18,
20, 22, 32, 34
5 x 5



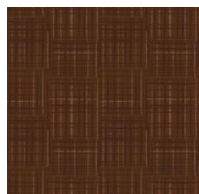
Cream Bark
for leaves #2,
5, 56
5 x 5



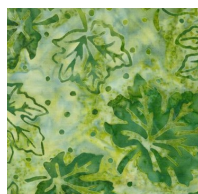
Red Batik for
woodpeckers
#26, 44
3 x 3



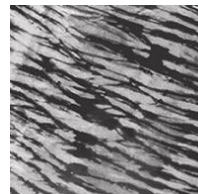
Golden Brown
for nest #10
2 x 2



Dk Brown for
acorn caps
#19, 21, 23
5 x 5



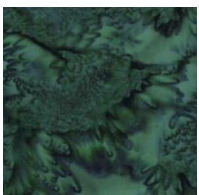
Med Green for
leaves #3, 6,
17
5 x 5



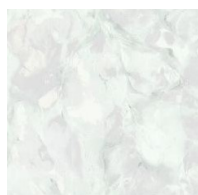
Black & White
feather for
woodpeckers
#27, 48
3 x 3



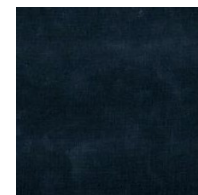
Med Lt Gray
for baby bird
#9
2 x 2



Dk Green for
leaves #1, 4,
51
5 x 5



Lt Gray for
woodpeckers
#25, 43
4 x 4



Black Batik for
woodpeckers
#28, 29, 45,
46
3 x 3



Med Pink for
inside baby
birds mouth
#13
2 x 2



903-760-7397

info@stitchinheaven.com