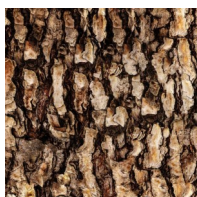


Into The Woods

Month #5

Block 5

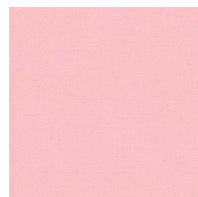
Polly Opossum



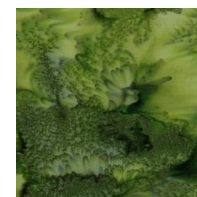
Brown Bark
for tree #38
12 x 12



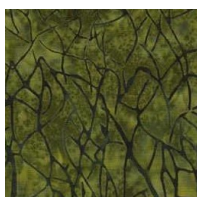
Cream for
head #13, 22,
25, 29
5 x 5



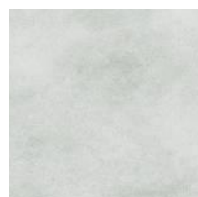
Pink Batik for
fingers & toes
#46, 48, 50
4 x 4



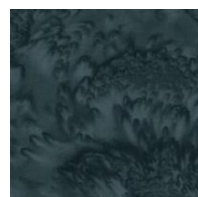
Med Green for
grasshoppers
#59, 60, 63
3 x 3



Med Green for
leaves #18,
19, 31, 32, 33
7 x 7



Med Gray for
baby heads
#7, 8, 26, 30
5 x 5



Black Batik for
inside ears
#9, 11
3 x 3



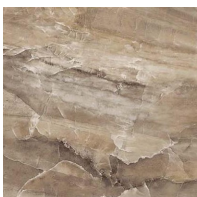
Dk Gray for
body & ears
#1, 2, 10, 12
6 x 6



Lt Pink for tail,
fingers & toes
#5, 47, 49, 51
4 x 4



Dk. Purple for
berries #70,
71, 72, 73
3 x 3



Med Gray for
legs & head
#3, 4, 6, 17
5 x 5



Med Gray for
baby bodies
#21, 24, 28
4 x 4



Lt Batik for
grasshoppers
#58, 61, 62
3 x 3



903-760-7397

info@stitchinheaven.com