

# Into The Woods

Month #12

Block 12

Fox & Chickadee



Light Green  
for grass  
#6  
12 x 2



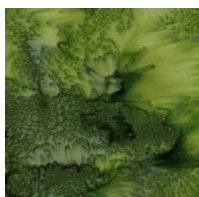
Med Green for  
leaves  
#1, 3, 4  
5 x 5



Medium green  
for leaves  
#32, 33, 37,  
41, 42  
3 x 3



Med Brown  
for tree  
#7  
11 x 10



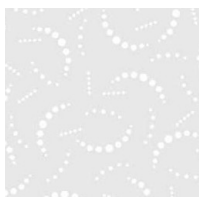
Dark Green for  
leaves  
#2, 5  
5 x 5



Medium green  
for leaves  
#24, 35, 36,  
38, 40  
3 x 3



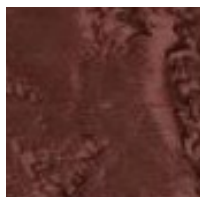
Reddish  
Brown for  
body, leg &  
ears  
#12, 16, 20  
5 x 5



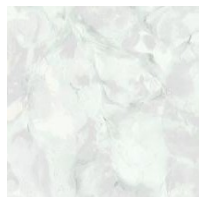
White gray  
swirl for head  
& tail  
#8, 21  
4 x 4



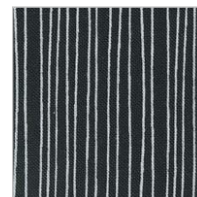
Medium tan  
cream for bird  
#24  
3 x 3



Reddish  
Brown for fox  
tail  
#9  
5 x 5



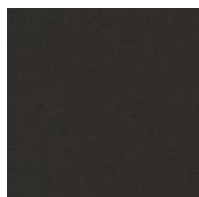
White gray  
crackle for fox  
#13, 14  
4 x 4



Black & white  
stripe for bird  
tail  
#24  
3 x 3



Reddish  
Brown for fox  
head & legs  
#10, 18, 23  
5 x 5



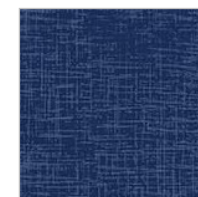
Dark brown  
for feet  
#1, 15, 17  
3 x 3



Black for fox  
ears  
#19, 22  
2 x 2



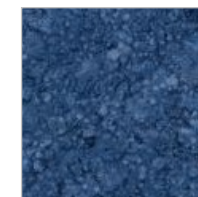
Black for bird  
head  
#28, 29  
2 x 2



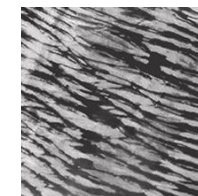
Deep blue for  
berries  
#43, 45, 47,  
52  
2 x 2



Medium blue  
for berries  
#46, 49, 53  
2 x 2



Medium blue  
for berries  
#39, 44, 48,  
51  
2 x 2



Black & white  
for bird wing  
#26  
2 x 2



White for bird  
head  
#27  
2 x 2



903-760-7397

[info@stitchinheaven.com](mailto:info@stitchinheaven.com)