

JOURNEY TO THE STARS 2019

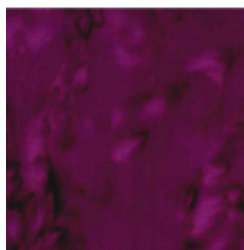
MONTH 10—SPINNING STAR

FENCE RAIL BLOCKS

Make 9 dark rails and 21 light rails using leftover fabric from month #2 and 1 rail that is different

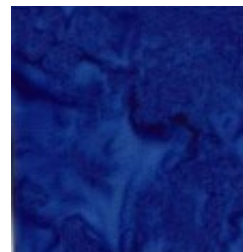
LIGHT BACKGROUND FABRIC

16"x 10"



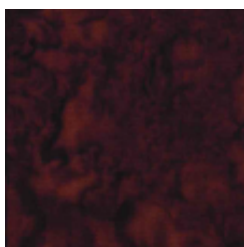
Potion

4x4



Royal

6x20



Fudge

6x20



Solar

6x20



903-760-7397

bomhq@stitchinheaven.com