

Ladies of the Sea

Month 8

The Constitution & The Oseberg



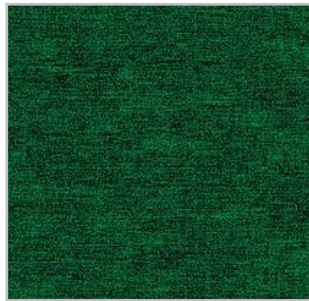
10 x 10.5

Green 1 (light)



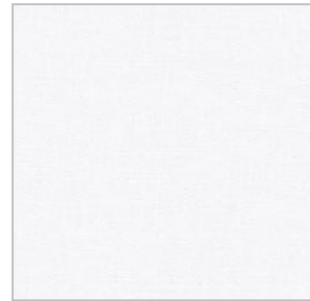
15 x 10.5

Green 2 (medium)



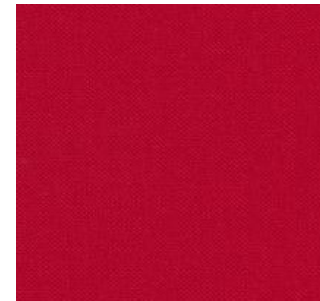
9 x 10.5

Green 3 (dark)



15 x 10.5

White



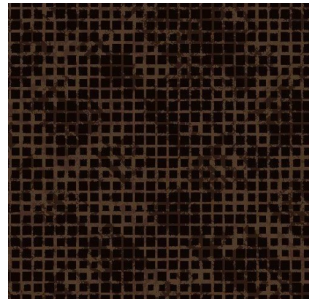
18 x 4

Red



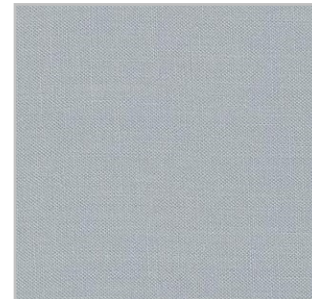
18 x 7

Brown 1 (medium)



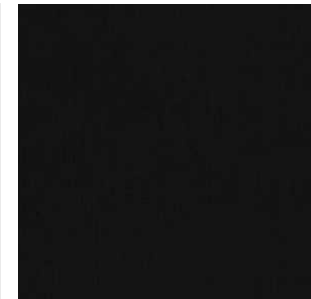
18 x 7

Brown 2 (dark)



8 x 4

Silver-Gray



8 x 2

Black



903-760-7397

info@stitchinheaven.com